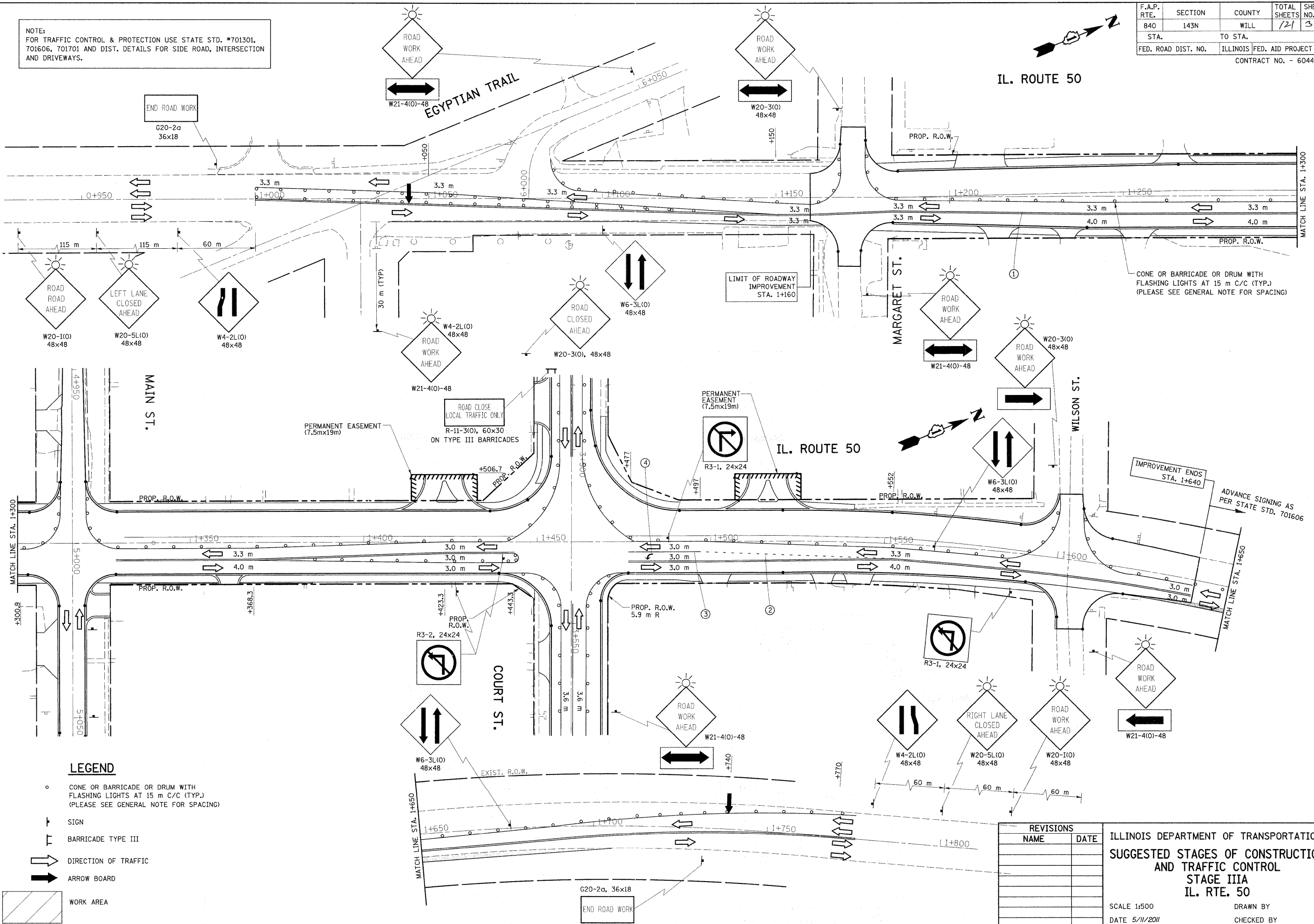


NOTE:
 FOR TRAFFIC CONTROL & PROTECTION USE STATE STD. #701301,
 701606, 701701 AND DIST. DETAILS FOR SIDE ROAD, INTERSECTION
 AND DRIVEWAYS.

F.A.P. RTE.	SECTION	COUNTY	TOTAL SHEETS	SHEET NO.
840	143N	WILL	121	30
STA.	TO STA.			
FED. ROAD DIST. NO.	ILLINOIS FED. AID PROJECT			
CONTRACT NO. - 60445				

IL. ROUTE 50



CONE OR BARRICADE OR DRUM WITH
 FLASHING LIGHTS AT 15 m C/C (TYP.)
 (PLEASE SEE GENERAL NOTE FOR SPACING)

IMPROVEMENT ENDS
 STA. 1+640
 ADVANCE SIGNING AS
 PER STATE STD. 701606

LEGEND

- CONE OR BARRICADE OR DRUM WITH FLASHING LIGHTS AT 15 m C/C (TYP.) (PLEASE SEE GENERAL NOTE FOR SPACING)
- ⊥ SIGN
- ⊥ BARRICADE TYPE III
- ➔ DIRECTION OF TRAFFIC
- ➔ ARROW BOARD
- ▨ WORK AREA

REVISIONS	
NAME	DATE

ILLINOIS DEPARTMENT OF TRANSPORTATION
 SUGGESTED STAGES OF CONSTRUCTION
 AND TRAFFIC CONTROL
 STAGE IIIA
 IL. RTE. 50

SCALE 1:500
 DATE 5/11/2011
 DRAWN BY
 CHECKED BY