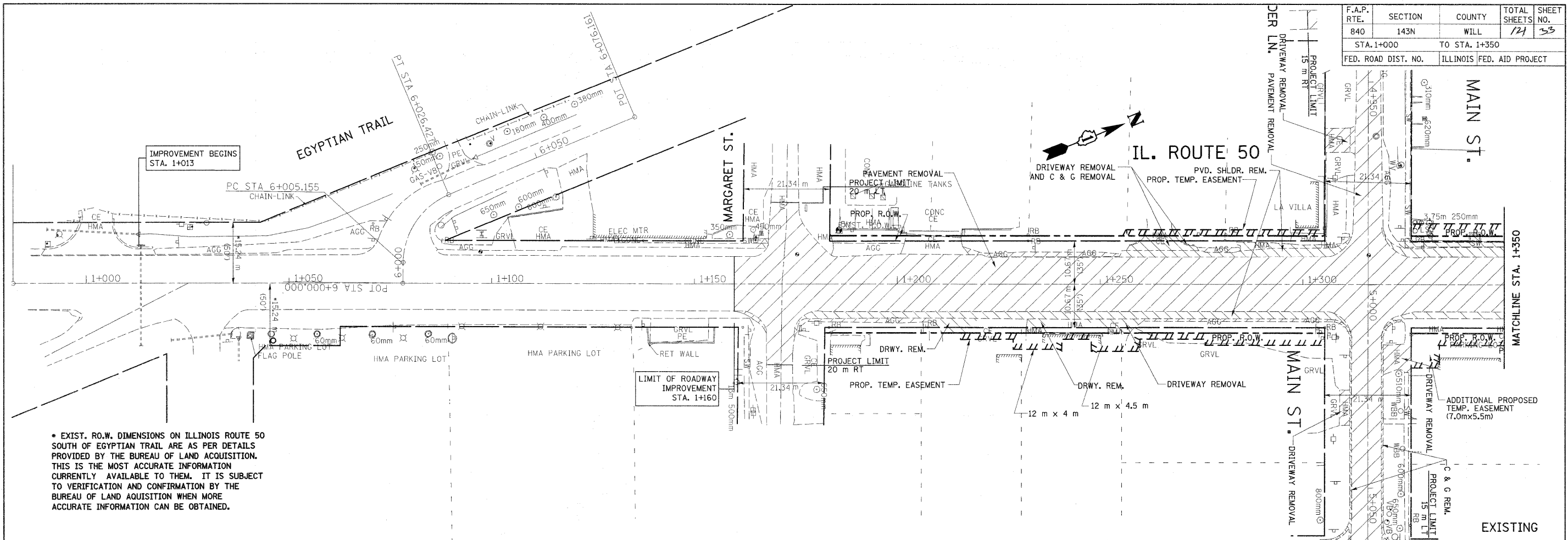
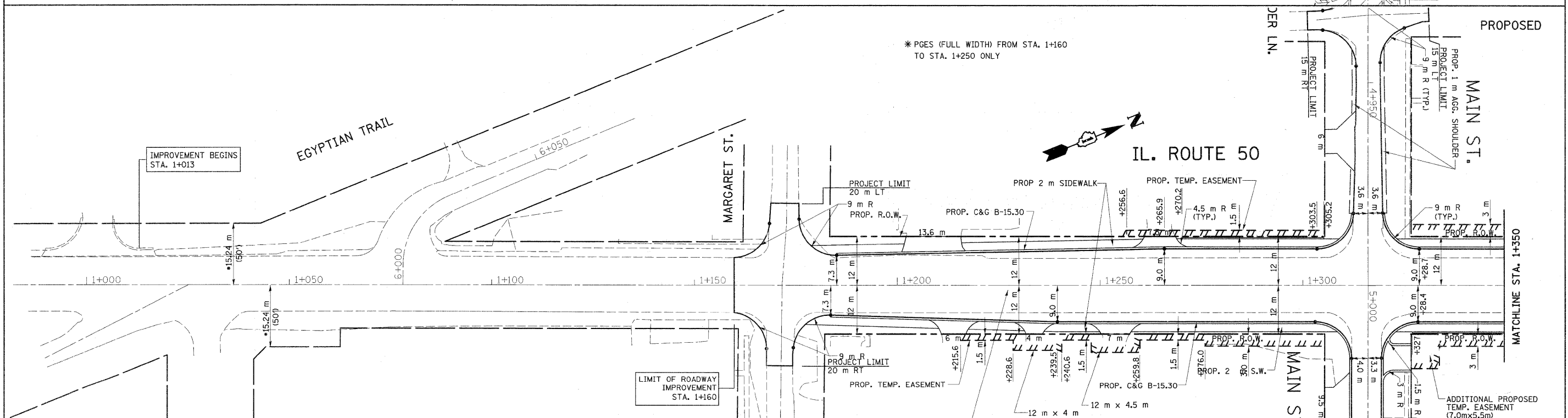


F.A.P. RTE.	SECTION	COUNTY	TOTAL SHEETS	SHEET NO.
840	143N	WILL	121	53
STA. 1+000		TO STA. 1+350		
FED. ROAD DIST. NO.		ILLINOIS FED. AID PROJECT		



• EXIST. R.O.W. DIMENSIONS ON ILLINOIS ROUTE 50 SOUTH OF EGYPTIAN TRAIL ARE AS PER DETAILS PROVIDED BY THE BUREAU OF LAND ACQUISITION. THIS IS THE MOST ACCURATE INFORMATION CURRENTLY AVAILABLE TO THEM. IT IS SUBJECT TO VERIFICATION AND CONFIRMATION BY THE BUREAU OF LAND ACQUISITION WHEN MORE ACCURATE INFORMATION CAN BE OBTAINED.



* PGES (FULL WIDTH) FROM STA. 1+160 TO STA. 1+250 ONLY

PROPOSED RE-CONSTRUCTION:
 * PGES 150 mm (6")
 AGGREGATE SUB-GRADE, 300 mm (12")
 HMA PAVEMENT (FULL DEPTH), 32 5mm (13")
 (SEE TYPICAL SECTION & MIXTURE TABLE)

REVISIONS	
NAME	DATE

ILLINOIS DEPARTMENT OF TRANSPORTATION
 EXISTING & PROPOSED ROADWAY PLAN
 IL. RTE. 50
 SCALE 1:500
 DATE 5/11/2011
 DRAWN BY
 CHECKED BY Rev.