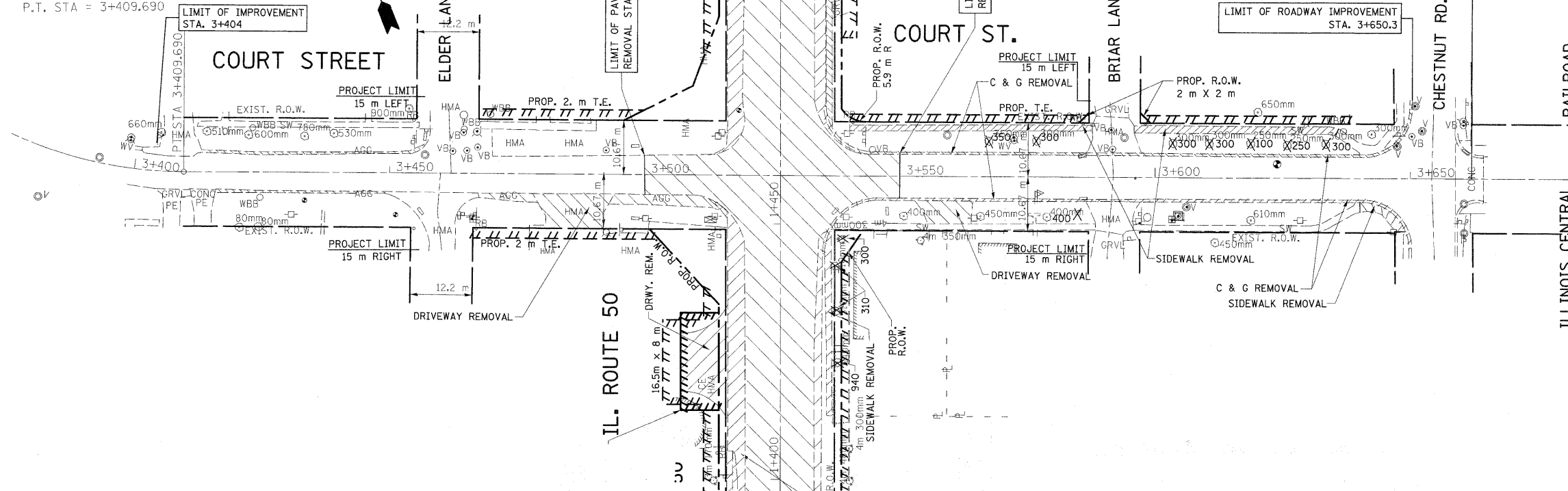
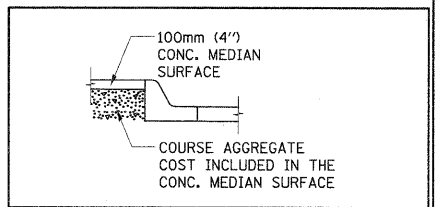
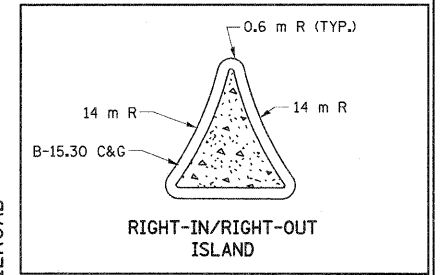


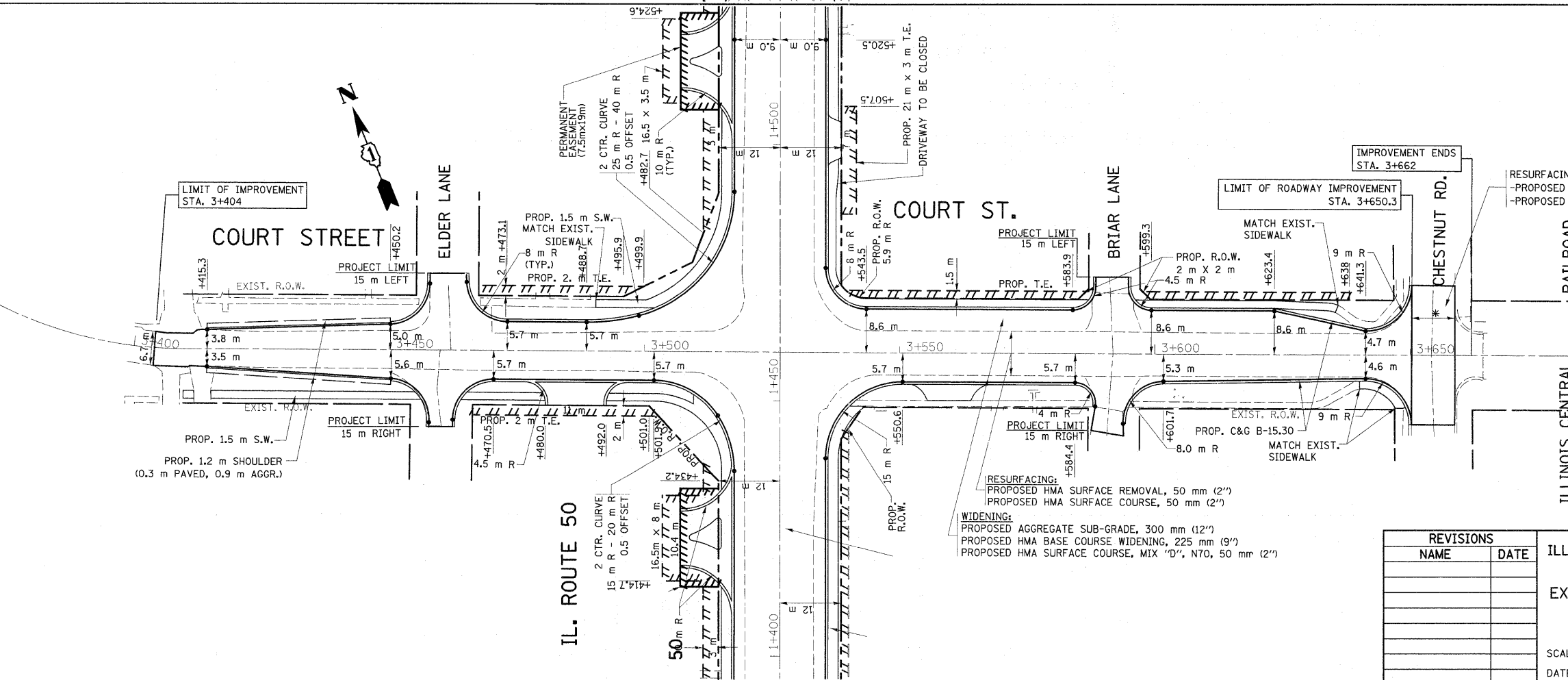
F.A.P. RTE.	SECTION	COUNTY	TOTAL SHEETS	SHEET NO.
840	143N	WILL	121	35
STA. 3+400 TO STA. 3+675				
FED. ROAD DIST. NO.		ILLINOIS FED. AID PROJECT		

EXIST. CURVE E.COURT-1
 PI STA = 3+368.084
 $\Delta = 67^\circ 24' 51''$ (LT)
 R = 81.659 m
 T = 54.474 m
 L = 96.080 m
 E = 16.502 m
 e = ----- m
 T.R. = ----- m
 S.E. RUN. = ----- m
 P.C. STA = 3+313.610
 P.T. STA = 3+409.690

NOTE: TREE DIMENSIONS ARE IN MILLIMETERS.



EXISTING



PROPOSED

REVISIONS		ILLINOIS DEPARTMENT OF TRANSPORTATION
NAME	DATE	
		EXISTING & PROPOSED ROADWAY PLAN COURT ST.

SCALE 1:500
 DATE 5/11/2011
 DRAWN BY
 CHECKED BY