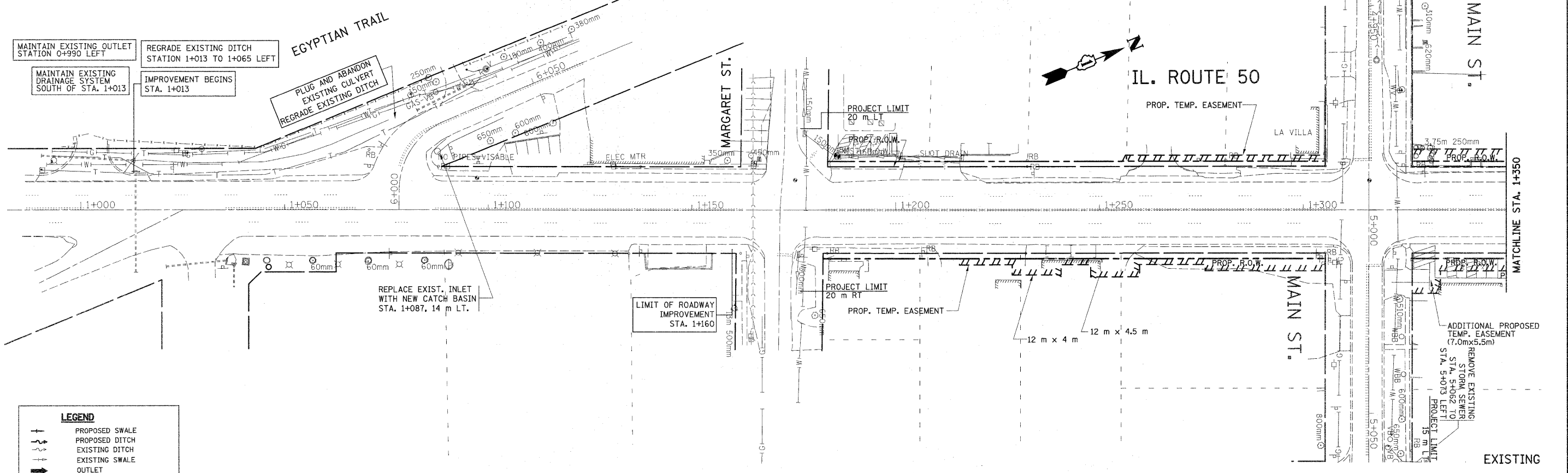
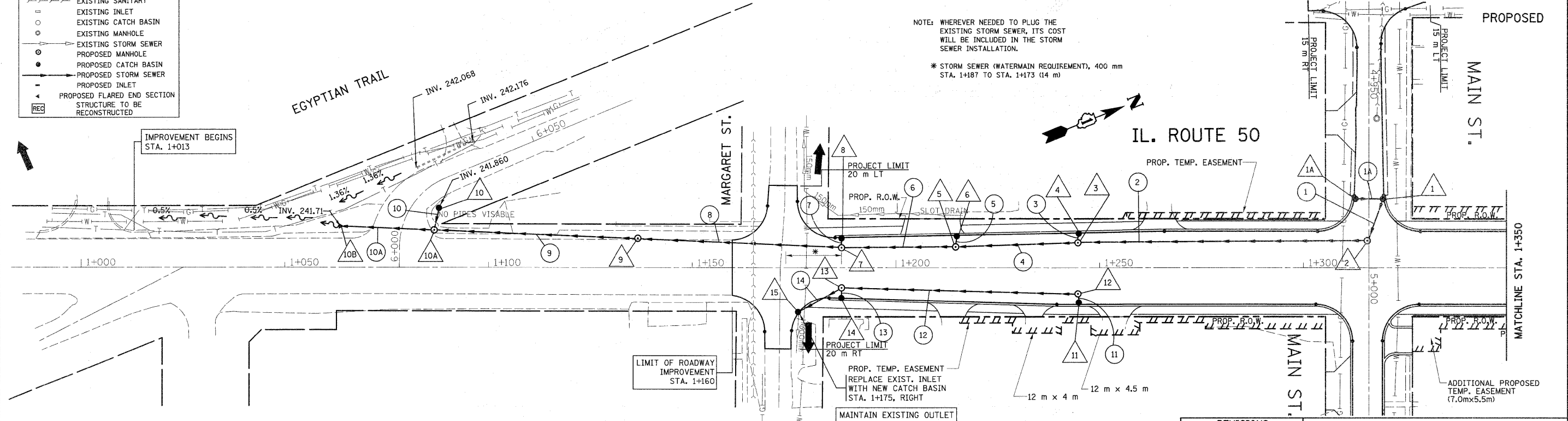


F.A.P. RTE.	SECTION	COUNTY	TOTAL SHEETS	SHEET NO.
840	143N	WILL	121	41
STA. 1+000 TO STA. 1+350				
FED. ROAD DIST. NO.		ILLINOIS	FED. AID PROJECT	



LEGEND

- +— PROPOSED SWALE
- - - PROPOSED DITCH
- - - EXISTING DITCH
- + - EXISTING SWALE
- +— OUTLET
- +— EXISTING SANITARY
- EXISTING INLET
- EXISTING CATCH BASIN
- EXISTING MANHOLE
- EXISTING STORM SEWER
- PROPOSED MANHOLE
- PROPOSED CATCH BASIN
- PROPOSED STORM SEWER
- +— PROPOSED INLET
- ▲ PROPOSED FLARED END SECTION STRUCTURE TO BE RECONSTRUCTED



NOTE: WHEREVER NEEDED TO PLUG THE EXISTING STORM SEWER, ITS COST WILL BE INCLUDED IN THE STORM SEWER INSTALLATION.

* STORM SEWER (WATERMAIN REQUIREMENT), 400 mm STA. 1+187 TO STA. 1+173 (14 m)

REVISIONS

NAME	DATE

ILLINOIS DEPARTMENT OF TRANSPORTATION

**IL. RTE. 50
EXISTING & PROPOSED
DRAINAGE & UTILITIES PLAN**

SCALE 1:500
DATE 8/17/2011

DRAWN BY
CHECKED BY