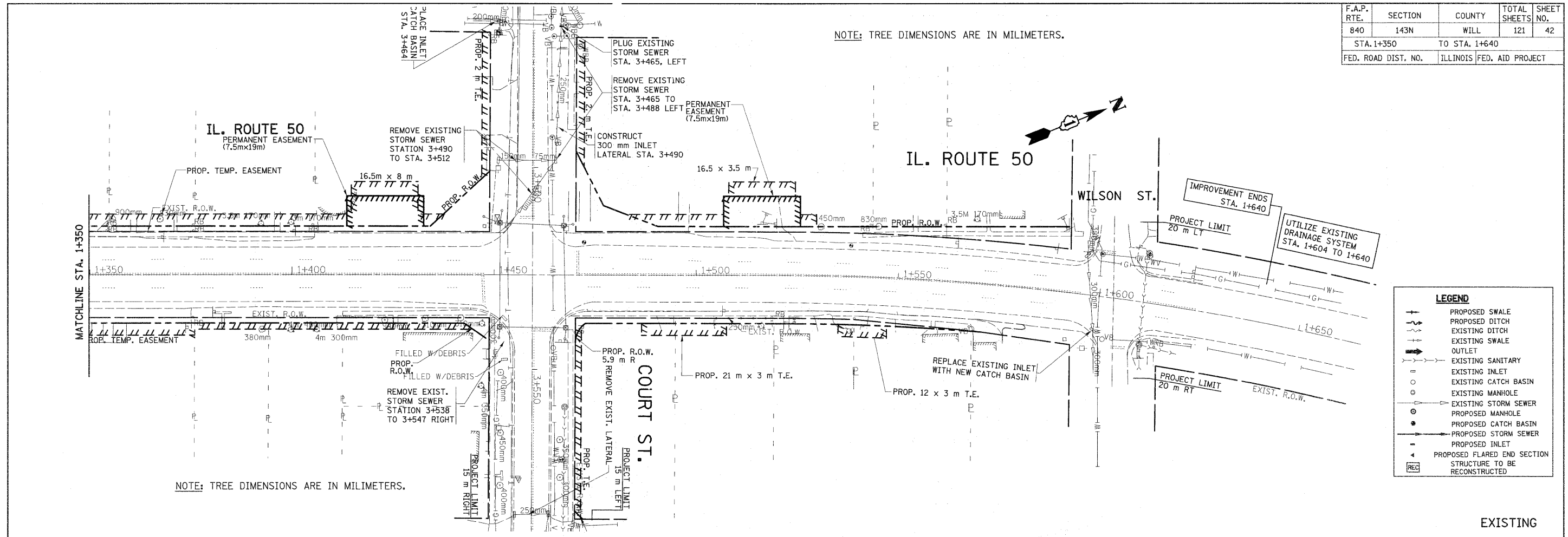


F.A.P. RTE.	SECTION	COUNTY	TOTAL SHEETS	SHEET NO.
840	143N	WILL	121	42
STA. 1+350		TO STA. 1+640		
FED. ROAD DIST. NO.		ILLINOIS FED. AID PROJECT		

NOTE: TREE DIMENSIONS ARE IN MILLIMETERS.



NOTE: TREE DIMENSIONS ARE IN MILLIMETERS.

LEGEND

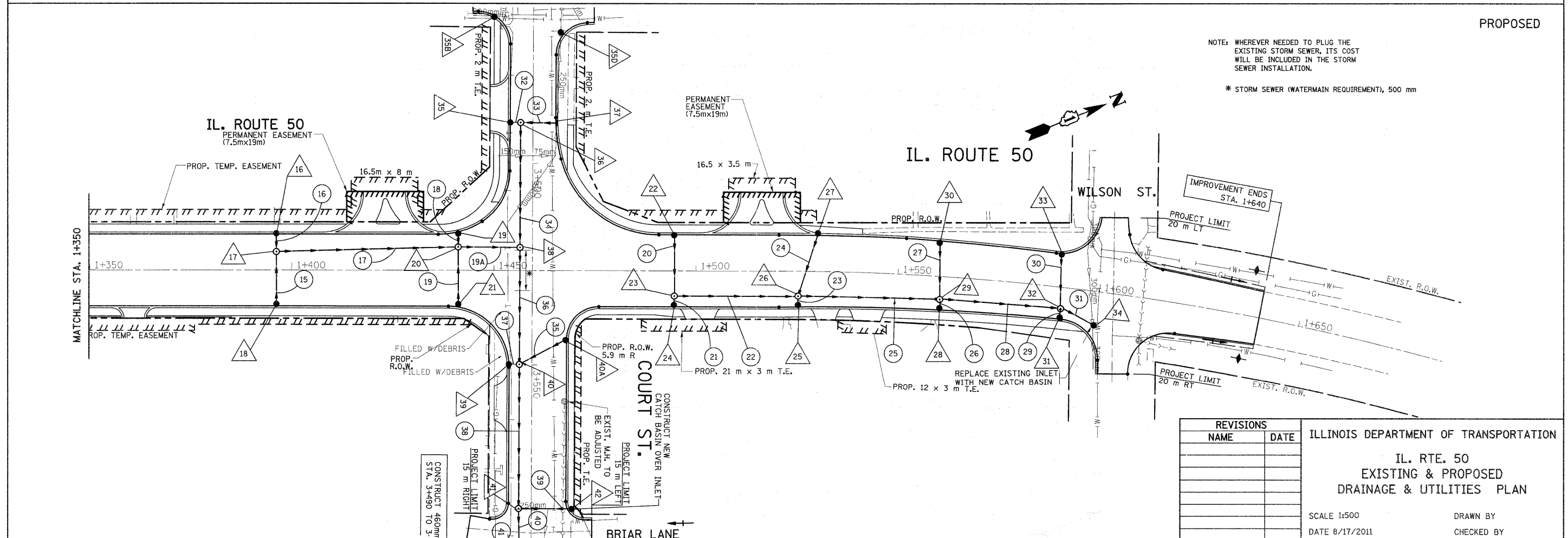
- +— PROPOSED SWALE
- - - PROPOSED DITCH
- - - EXISTING DITCH
- - - EXISTING SWALE
- OUTLET
- EXISTING SANITARY
- EXISTING INLET
- EXISTING CATCH BASIN
- EXISTING MANHOLE
- EXISTING STORM SEWER
- PROPOSED MANHOLE
- PROPOSED CATCH BASIN
- PROPOSED STORM SEWER
- PROPOSED INLET
- ◄ PROPOSED FLARED END SECTION
- ◄ STRUCTURE TO BE RECONSTRUCTED

EXISTING

PROPOSED

NOTE: WHEREVER NEEDED TO PLUG THE EXISTING STORM SEWER, ITS COST WILL BE INCLUDED IN THE STORM SEWER INSTALLATION.

* STORM SEWER (WATERMAIN REQUIREMENT), 500 mm



REVISIONS	
NAME	DATE

ILLINOIS DEPARTMENT OF TRANSPORTATION

**IL. RTE. 50
EXISTING & PROPOSED
DRAINAGE & UTILITIES PLAN**

SCALE 1:500
DATE 8/17/2011

DRAWN BY
CHECKED BY