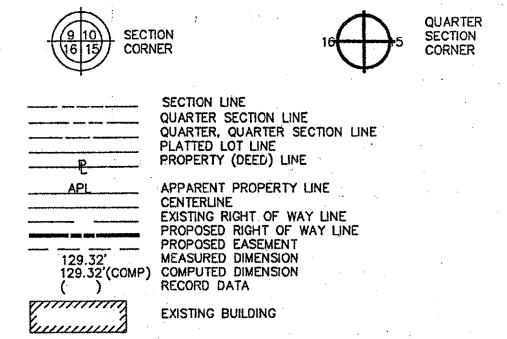


CONTRACT # 60445  
50 of 121

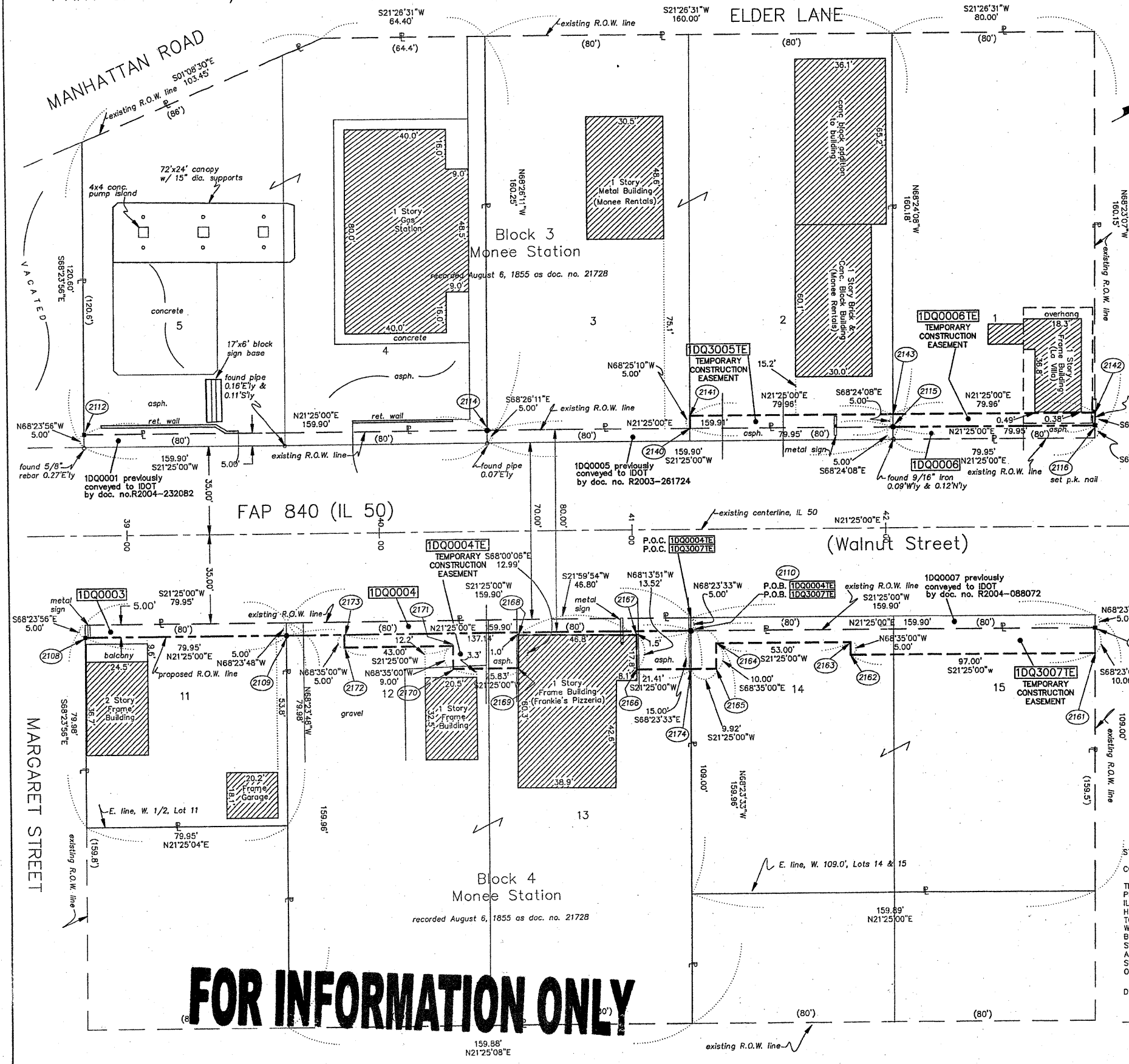
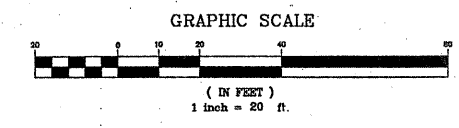
PART OF THE SW.1/4 OF SEC. 21, T.34N., R.13E. OF THE 3rd P.M., IN WILL COUNTY, ILLINOIS.

LEGEND



COORDINATE TABLE

STATION	OFFSET	PTH	NORTH	EAST
38+82.97	40.00' RT.	2108	1731332.318	1145148.542
39+62.92	40.00' RT.	2109	1731406.746	1145177.735
41+22.82	40.00' RT.	2110	1731555.600	1145236.121
42+82.71	40.00' RT.	2111	1731704.459	1145294.508
38+82.23	40.00' LT.	2112	1731361.770	1145074.160
40+43.13	40.00' LT.	2114	1731510.629	1145132.548
42+03.04	40.00' LT.	2115	1731659.495	1145190.938
42+82.99	40.00' LT.	2116	1731733.928	1145220.133
41+23.08	40.00' LT.	2140	1731585.062	1145161.743
41+23.10	45.00' LT.	2141	1731586.901	1145157.093
42+83.01	45.00' LT.	2142	1731735.770	1145215.484
42+03.05	45.00' LT.	2143	1731661.335	1145186.289
42+82.68	50.00' RT.	2161	1731700.775	1145303.805
41+85.68	50.00' RT.	2162	1731610.473	1145268.385
41+85.68	45.00' RT.	2163	1731612.299	1145263.731
41+32.68	45.00' RT.	2164	1731562.958	1145244.378
41+32.68	55.00' RT.	2165	1731559.307	1145253.687
41+01.36	55.00' RT.	2166	1731530.146	1145242.249
41+01.44	41.49' RT.	2167	1731535.158	1145229.698
40+54.64	41.01' RT.	2168	1731491.765	1145212.168
40+54.51	54.00' RT.	2169	1731486.900	1145224.212
40+28.68	54.00' RT.	2170	1731462.853	1145214.781
40+28.68	45.00' RT.	2171	1731466.140	1145206.402
39+85.68	45.00' RT.	2172	1731426.109	1145190.701
39+85.68	40.00' RT.	2173	1731427.935	1145186.046
41+22.77	55.00' RT.	2174	1731550.077	1145250.067



PARCEL NO.	OWNER	TOTAL HOLDING ACRES	PART TAKEN ACRES	REMAINDER ACRES	PREV. DED. ACRES	EASEMENT ACRES	EASEMENT PURPOSE	PERMANENT TAX INDEX NUMBER	PROPERTY ACQUIRED BY
1DQ0001	WILLIAM J. MCENERY, TRUSTEE OF WILLIAM J. MCENERY REVOCABLE TRUST	0.545	0.018	0.527	N/A	N/A	N/A	14-21-311-003 14-21-311-006	
1DQ0003	GERALD D. HAYES & MARY J. HAYES	0.147	0.009	0.138	N/A	N/A	N/A	14-21-312-005	
1DQ0004	FRANK APRILE & JANE S. APRILE	0.587	0.018	0.569	N/A	0.022	GRADING	14-21-312-003 14-21-311-004	
1DQ0005	JEFFREY ZAWASKI & LINDA ZAWASKI	0.588	0.018	0.570	N/A	N/A	N/A	14-21-311-005 14-21-311-007	
1DQ3005	JEFFREY ZAWASKI	0.570	N/A	0.570	N/A	0.009	GRADING	14-21-311-005 14-21-311-007	
1DQ0006	PEOTONE BANK & TRUST CO. TR. NO. 9-1400	0.294	0.009	0.285	N/A	0.009	GRADING	14-21-311-001	
1DQ0007	CLIFFORD C. & COLLEEN E. MIKUCE	0.400	0.018	0.382	N/A	N/A	N/A	14-21-312-001	
1DQ0017	CLIFFORD C. & COLLEEN E. MIKUCE	0.382	N/A	0.382	N/A	0.032	GRADING	14-21-312-001	

RECEIVED  
JUN 10 2010  
PLATS & LEGALS

NOTES:  
BASIS OF BEARINGS IS THE ILLINOIS STATE PLANE COORDINATE SYSTEM (NAD83)  
SEE SHEETS 6 AND 7 FOR REFERENCE TIES AND COORDINATE VALUES OF SET MONUMENTATION

STATE OF ILLINOIS }  
COUNTY OF WILL }  
THIS IS TO CERTIFY THAT I, RONALD F. HODGEN, AN ILLINOIS PROFESSIONAL LAND SURVEYOR, (WE RUETTIGER, TONELLI & ASSOCIATES, AN ILLINOIS PROFESSIONAL DESIGN FIRM LAND SURVEYING CORPORATION, NUMBER 89) HAVE SURVEYED THE PLAT OF HIGHWAYS SHOWN HEREON IN SECTION 21, TOWNSHIP 34 NORTH, RANGE 13 EAST OF THE THIRD PRINCIPAL MERIDIAN, WILL COUNTY; THAT THE SURVEY IS TRUE AND COMPLETE AS SHOWN TO THE BEST OF MY KNOWLEDGE AND BELIEF; THAT THE PLAT CORRECTLY REPRESENTS SAID SURVEY, THAT ALL MONUMENTS FOUND AND ESTABLISHED ARE OF PERMANENT QUALITY AND OCCUPY THE POSITIONS SHOWN THEREON AND THAT THE MONUMENTS ARE SUFFICIENT TO ENABLE THE SURVEY TO BE RETRACED. MADE FOR THE DEPARTMENT OF TRANSPORTATION, STATE OF ILLINOIS.

**RUETTIGER, TONELLI & ASSOCIATES, INC.**  
Land Surveyors/Engineers/Planners/Landscape Architects/C.I.S. Consultants  
2174 OHIO STREET  
JOLIET, ILLINOIS 60435  
PH (815) 744-9900 FAX (815) 744-0101

**PLAT OF HIGHWAYS**  
STATE OF ILLINOIS  
DEPARTMENT OF TRANSPORTATION  
F.A.P. 840 (IL 50)  
SECTION 143N WILL COUNTY  
PROJECT JOB NO. R91-004-01  
STATION 38+00 TO STATION 43+00  
SCALE: 1"=20' SHEET 2 OF 7

BUREAU OF LAND ACQUISITION  
201 WEST CENTER COURT  
SCHAUMBURG, ILLINOIS 60196

**FOR INFORMATION ONLY**

REVISION DATE	REVISION	PER IDOT REVIEW	MADE BY
6-10-10			TLW