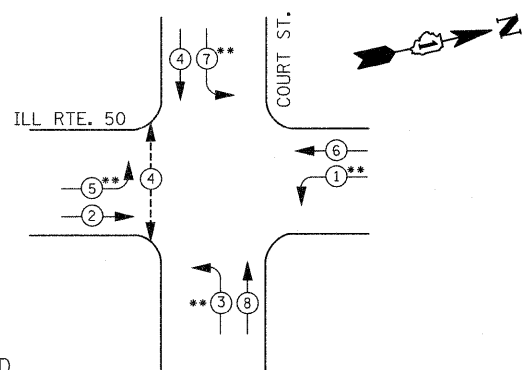


**TEMPORARY CABLE DIAGRAM**  
NOT TO SCALE

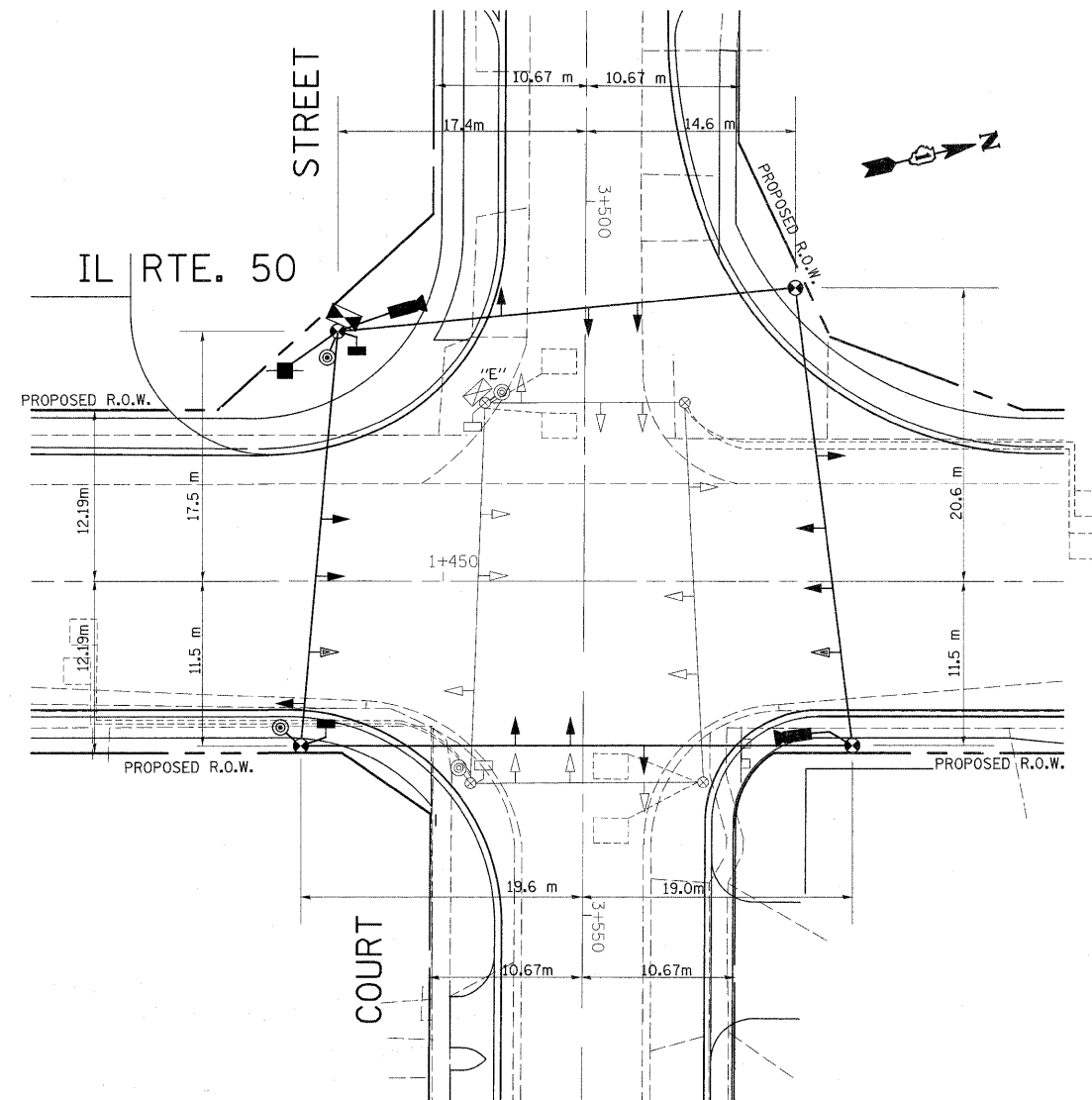
\* NOTE: SIGNAL HEAD SHALL BE BAGGED AND DISCONNECTED DURING PHASE I OF CONSTRUCTION. THESE HEADS SHALL BE UNBAGGED AND LIVENED FOR USE IN CONSTRUCTION PHASE II AND UNTIL THE PERMANENT SIGNALS ARE INSTALLED.



**LEGEND**

- ← ⊕ → DUAL ENTRY PHASE
- ← ⊕ → PEDESTRIAN PHASE
- NUMBER REFERS TO ASSOCIATED PHASE
- \*\* LEFT-TURN PHASES TO BE DEACTIVATED AS NECESSARY

**TEMPORARY PHASE DESIGNATION DIAGRAM**



**TEMPORARY TRAFFIC SIGNAL PLAN**

THE FOLLOWING EXISTING TRAFFIC SIGNAL EQUIPMENT SHALL BE REMOVED BY THE CONTRACTOR, SHALL REMAIN THE PROPERTY OF THE STATE AND SHALL BE DELIVERED BY THE CONTRACTOR TO THE STATE'S TRAFFIC SIGNAL MAINTENANCE CONTRACTOR'S MAIN FACILITY AS PER THE TRAFFIC SIGNAL SPECIFICATIONS.

- 1 EACH CONTROLLER AND CABINET, COMPLETE

THE FOLLOWING ITEMS SHALL BE REMOVED BY THE CONTRACTOR AND SHALL BE DISPOSED OF BY THEM OUTSIDE THE RIGHT-OF-WAY AT THEIR EXPENSE. THE SALVAGE VALUE OF THE REMOVED EQUIPMENT SHALL BE REFLECTED IN THE CONTRACT BID PRICE.

- 4.0 EACH WOOD POLE
- 12.0 EACH SIGNAL HEAD, 1-FACE 3-SECTION
- 2.0 EACH PEDESTRIAN SIGNAL HEAD, 1-FACE
- 3.0 EACH PEDESTRIAN PUSHBUTTON
- 1.0 EACH SERVICE INSTALLATION
- 1.0 L SUM SPAN WIRE
- 1.0 L SUM CABLE
- 1.0 L SUM TETHER WIRE

I.D.O.T. TRAFFIC SIGNAL INSTALLATION ELECTRICAL SERVICE REQUIREMENTS					TOTAL WATTAGE
TYPE	NO. LAMPS	WATTAGE		% OPERATION	
		INCAND.	LED		
SIGNAL (RED)	12	135	17	0.50	102.00
(YELLOW)	12	135	25	0.25	75.00
(GREEN)	12	135	15	0.25	45.00
ARROW	16	135	12	0.10	19.20
PED. SIGNAL	2	90	25	1.00	50.00
CONTROLLER	1	100	100	1.00	100.00
ILLUM. SIGN				0.50	
FLASHER				0.50	
ENERGY COSTS TO:					TOTAL = 409.20
ILLINOIS DEPARTMENT OF TRANSPORTATION 201 WEST CENTER COURT SCHAUMBURG, ILLINOIS 60196-1096					
ENERGY SUPPLY CONTACT: JUDY SCHOMER PHONE: (847) 870-2063 COMPANY: Com Ed					

FILE NAME =	USER NAME = lsgsa	DESIGNED -	REVISED -
c:\pwwork\pwwork\lsgsa\d0113189\1150\ecou	t.dgn	DRAWN -	REVISED -
		CHECKED -	REVISED -
		DATE -	REVISED -

DESIGNED -	REVISED -
DRAWN -	REVISED -
CHECKED -	REVISED -
DATE -	REVISED -

**STATE OF ILLINOIS  
DEPARTMENT OF TRANSPORTATION**

**TEMPORARY SIGNAL/CABLE AND REMOVAL PLAN  
ILL. RTE. 50 (GOVERNOR RD.) AT COURT STREET**

SCALE: SHEET NO. OF SHEETS STA. TO STA.

F.A.P. RTE.	SECTION	COUNTY	TOTAL SHEETS	SHEET NO.
840	1434	WILL	121	62
CONTRACT NO. 60445				
ILLINOIS FED. AID PROJECT				