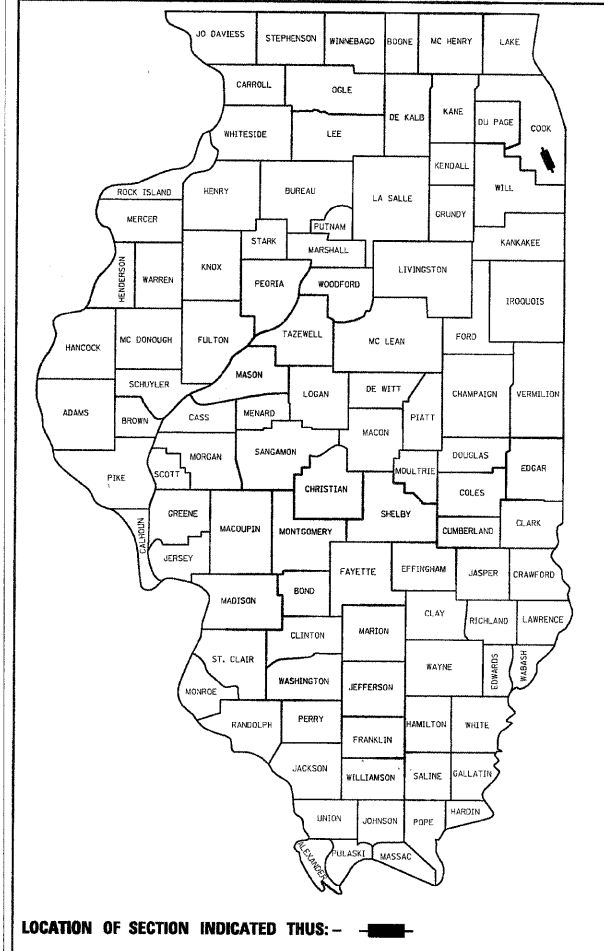


F.A.I. RTE.	SECTION	COUNTY	TOTAL SHEETS	SHEET NO.
57	112.1B	COOK	75	1
		ILLINOIS	CONTRACT NO. 60863	

0-91-534-99

*75+1 = 76
*76+3 = 79



LOCATION OF SECTION INDICATED THUS: -

STATE OF ILLINOIS
DEPARTMENT OF TRANSPORTATION
DIVISION OF HIGHWAYS

**PROPOSED
HIGHWAY PLANS**

F.A.I. ROUTE 57 (INTERSTATE 57) AT
F.A.U. ROUTE 3778 (CRAWFORD AVENUE) (SN 016-1015)
SECTION 112.1B
PROJECT : ACBHI-057-7(292)346
COOK COUNTY
BRIDGE DECK REMOVAL AND REPLACEMENT
C-91-534-99

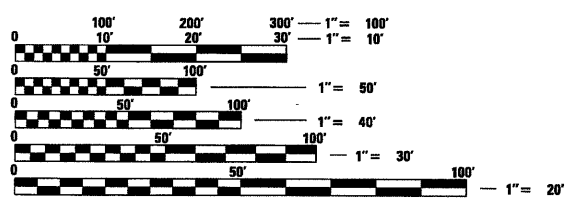
FOR INDEX OF SHEETS, SEE SHEET NO. 2

TRAFFIC DATA

CRAWFORD AVENUE
EXISTING ADT : 13,300 (2010)
POSTED SPEED LIMIT 45 MPH
IL 57
EXISTING ADT : 105,100 (2008)
POSTED SPEED LIMIT 55 MPH

THIS PROJECT WILL REQUIRE AUTHORIZATION UNDER
(SWPPP) PERMIT

IMPROVEMENT IS LOCATED IN THE CITY OF MARKHAM



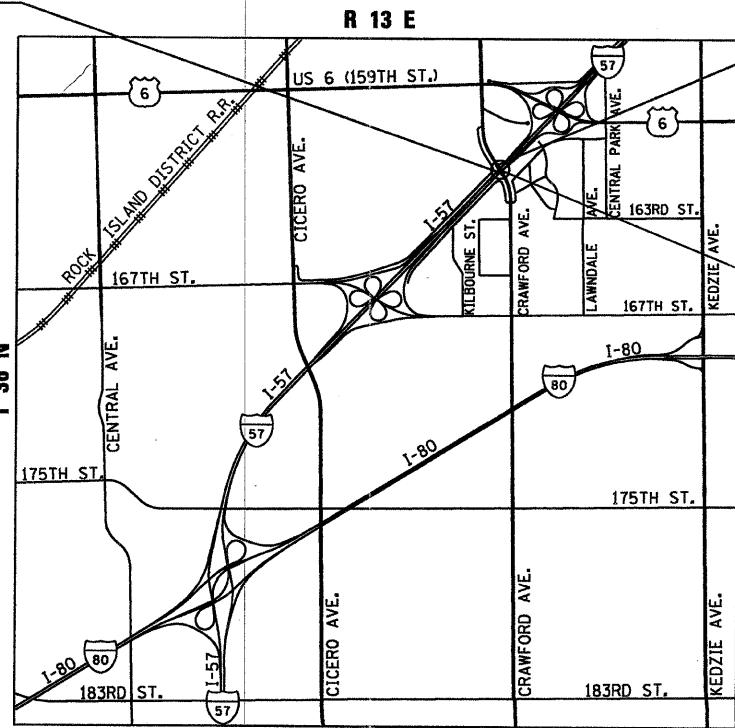
FULL SIZE PLANS HAVE BEEN PREPARED USING STANDARD
ENGINEERING SCALES. REDUCED SIZED PLANS WILL NOT
CONFORM TO STANDARD SCALES. IN MAKING MEASUREMENTS
ON REDUCED PLANS, THE ABOVE SCALES MAY BE USED.

J.U.L.I.E.
JOINT UTILITY LOCATION INFORMATION FOR EXCAVATION
1-800-892-0123
OR 811

PROJECT ENGINEER ROBERT BORO
PROJECT MANAGER ISSAM RAYYAN
CONTRACT NO. 60863



PROJECT BEGINS
STA. 19+25



PROJECT ENDS
STA. 29+00

± STA. 23+91.74
SN 016-1015

BREMEN TWP

LOCATION MAP
NOT TO SCALE

GROSS LENGTH = 975 FT. = 0.18 MILE
NET LENGTH = 975 FT. = 0.18 MILE



THOMAS M. HEIN, P. E.
IL. L.I.C. NO. 062-053199
EXP 11-30-2011
DATE 07-07-2011

STATE OF ILLINOIS
DEPARTMENT OF TRANSPORTATION
DIVISION OF HIGHWAYS
SUBMITTED July 12, 2011
Diane M. O'Keefe
DEPUTY DIRECTOR OF HIGHWAYS, REGION ENGINEER
August 19, 2011
Scott E. Stitt, P.E.
ENGINEER OF DESIGN AND ENVIRONMENT
August 19, 2011
Christine M. Road
DIRECTOR OF HIGHWAYS, CHIEF ENGINEER

PRINTED BY THE AUTHORITY
OF THE STATE OF ILLINOIS