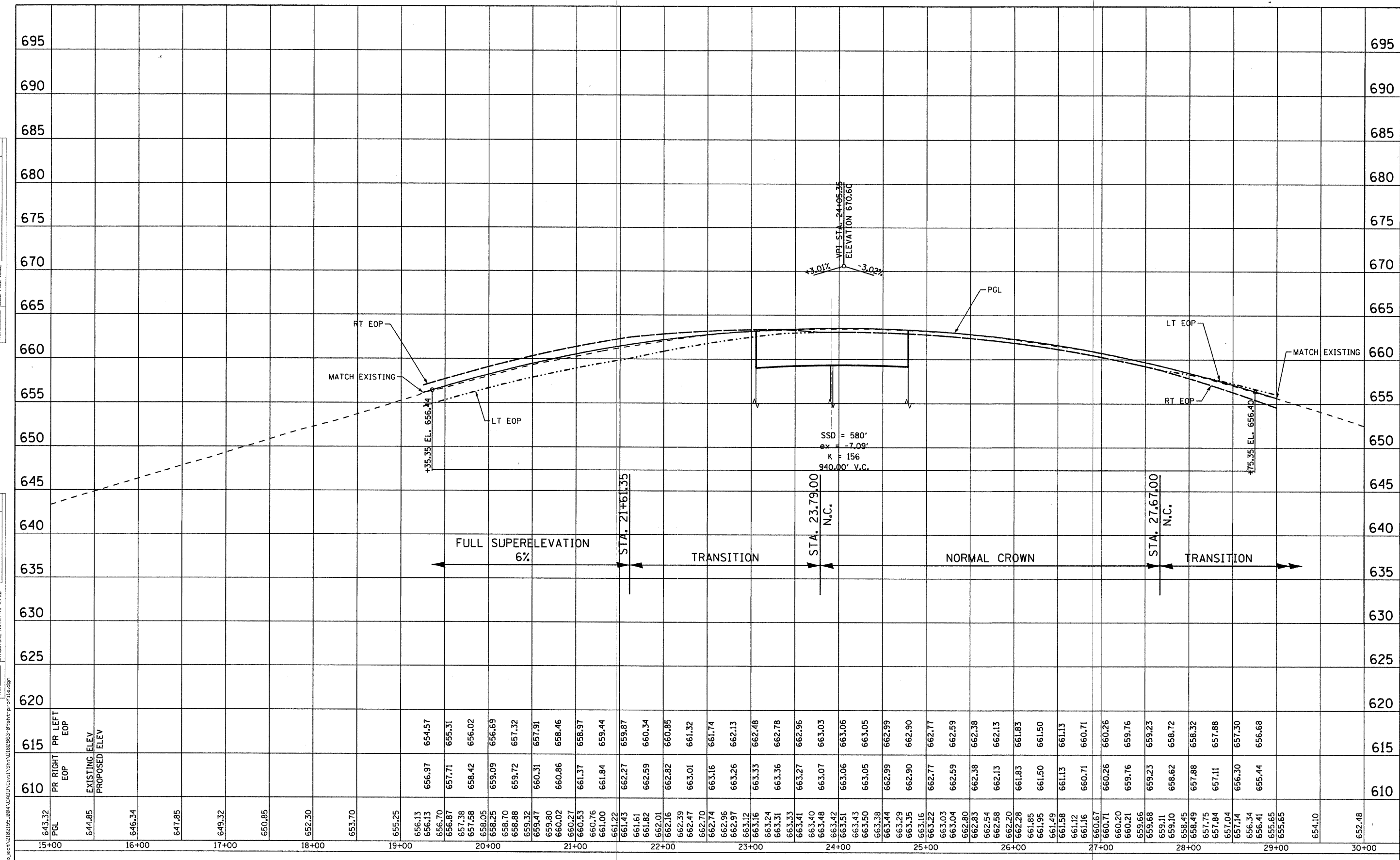


PLAN	DATE
REVISIONS	
NO.	
NO.	
NO.	
NO.	
NO.	

PROFILE	DATE
REVISIONS	
NO.	
NO.	
NO.	
NO.	
NO.	



ELEVATIONS GIVEN EVERY 25 FT



USER NAME = 2PIENID	DESIGNED -	REVISED -
FLY SCALE = 50.00' / 1" IN.	DRAWN -	REVISED -
FLY DATE = 9/17/2011	CHECKED -	REVISED -
	DATE -	REVISED -

**STATE OF ILLINOIS
DEPARTMENT OF TRANSPORTATION**

**FAI ROUTE 57 (INTERSTATE 57) AT FAU ROUTE 3778 (CRAWFORD AVENUE)
EXISTING AND PROPOSED PROFILE**

F.A.I. RTE. 57	SECTION 1112.JB	COUNTY COOK	TOTAL SHEETS 75	SHEET NO. 12
SCALE: 50.00' / 1" IN.				CONTRACT NO. 0863
SHEET NO. OF SHEETS STA. TO STA.				ILLINOIS FED. AID PROJECT