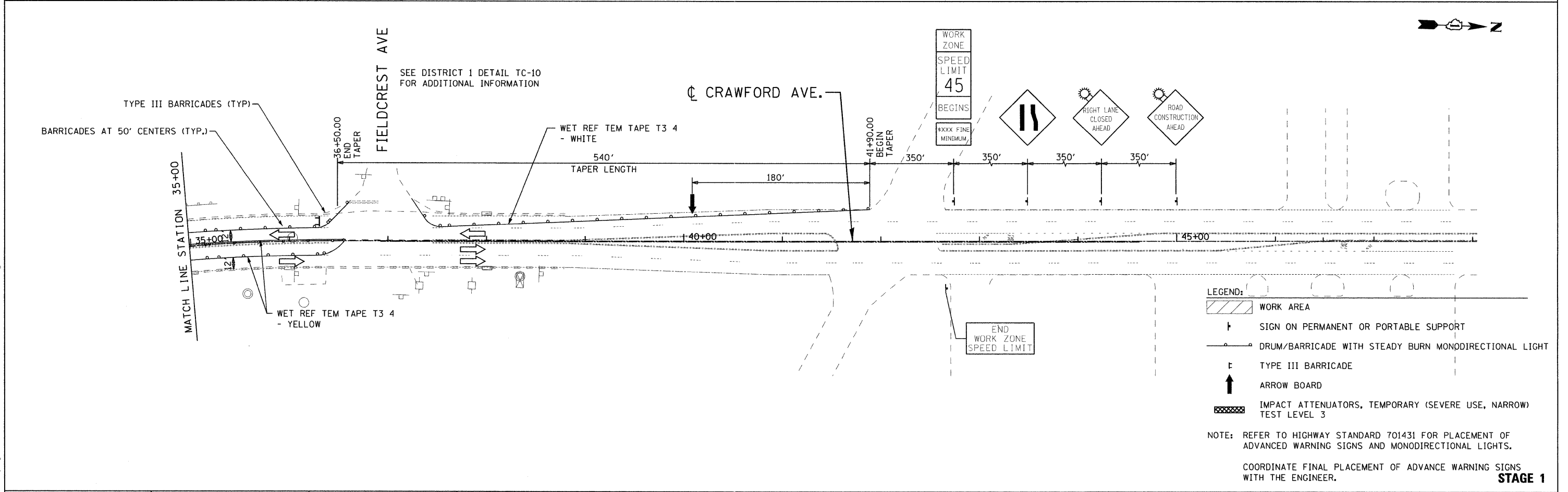


STAGE 1



- LEGEND:
- WORK AREA
 - SIGN ON PERMANENT OR PORTABLE SUPPORT
 - DRUM/BARRICADE WITH STEADY BURN MONODIRECTIONAL LIGHT
 - TYPE III BARRICADE
 - ARROW BOARD
 - IMPACT ATTENUATORS, TEMPORARY (SEVERE USE, NARROW TEST LEVEL 3)

NOTE: REFER TO HIGHWAY STANDARD 701431 FOR PLACEMENT OF ADVANCED WARNING SIGNS AND MONODIRECTIONAL LIGHTS.

COORDINATE FINAL PLACEMENT OF ADVANCE WARNING SIGNS WITH THE ENGINEER.

STAGE 1

FILE NAME = G:\projects\2102155_004\CADD\CG.v11\Sheet\0108063-12ah-tr-mainL02.dgn

	USER NAME = 2P1END	DESIGNED - DJB	REVISED -	STATE OF ILLINOIS DEPARTMENT OF TRANSPORTATION	FAI ROUTE 57 (INTERSTATE 57) AT FAU ROUTE 3778 (CRAWFORD AVENUE) MAINTENANCE OF TRAFFIC - STAGE 1	F.A.I. RTE. 57	SECTION 1112.IB	COUNTY COOK	TOTAL SHEETS 75	SHEET NO. 15
	PLOT SCALE = 50.00' / IN.	CHECKED - TMH	REVISED -			SCALE: 50.00' / IN.	SHEET NO. OF SHEETS	STA. TO STA.	CONTRACT NO. 60863	
	PLOT DATE = 8/17/2011	DATE - 06/15/11	REVISED -			FED. ROAD DIST. NO. 1 ILLINOIS FED. AID PROJECT				