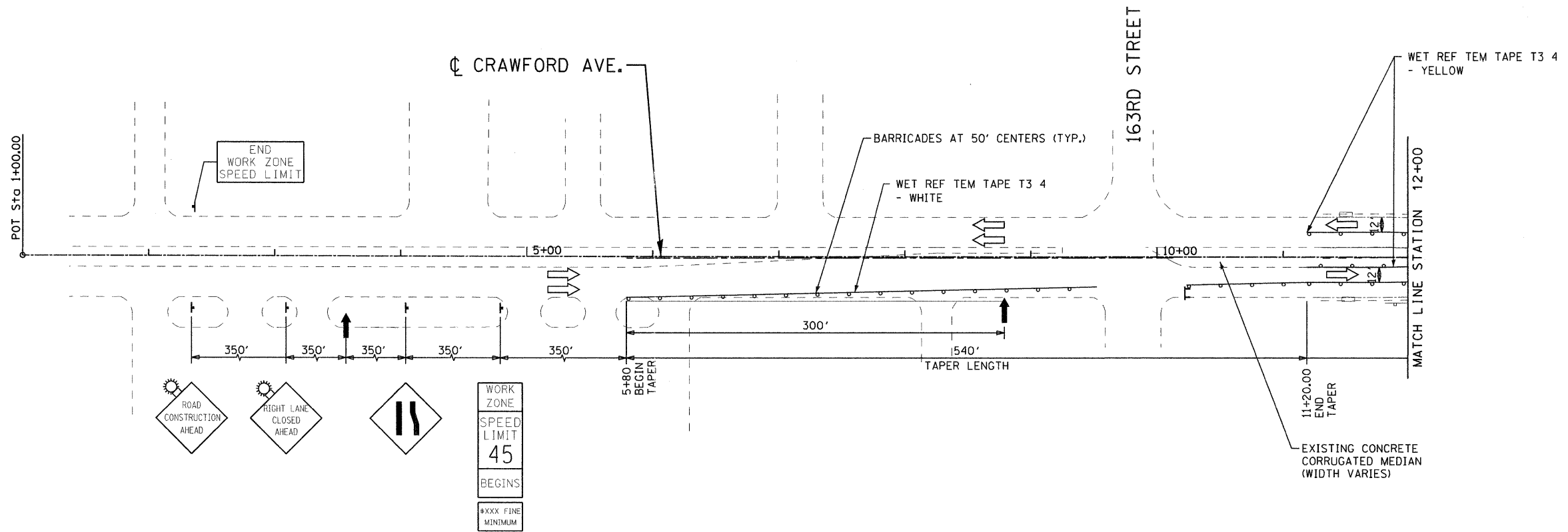
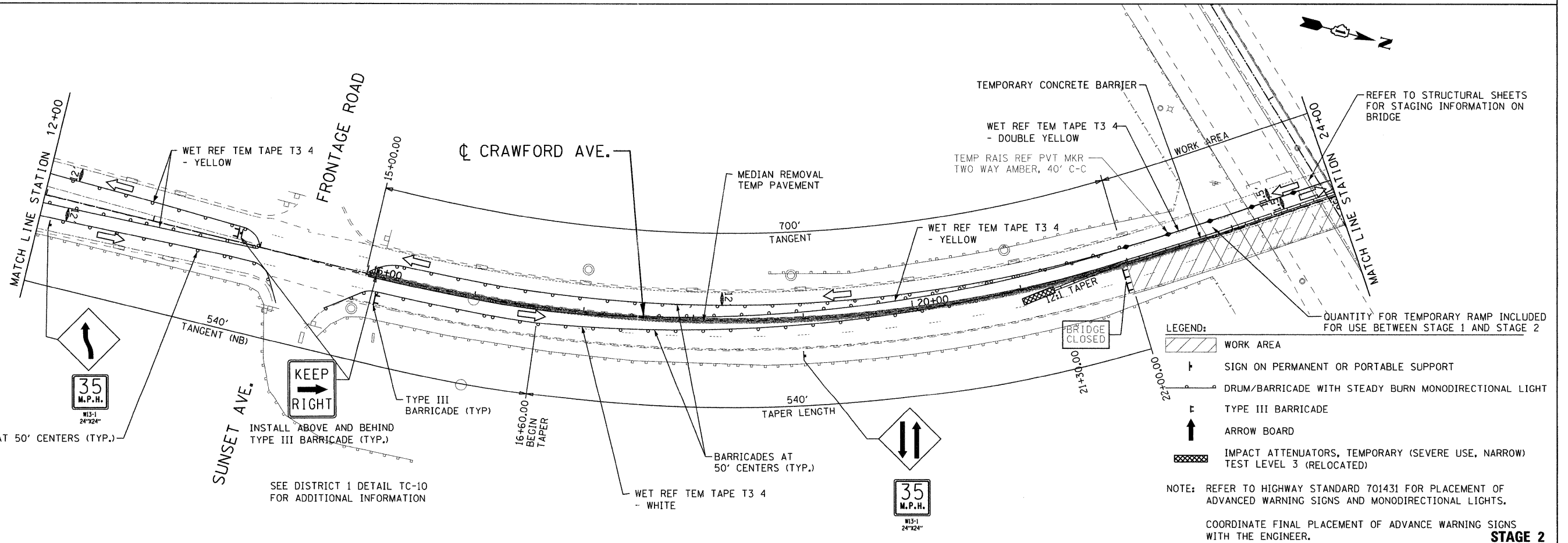


SEE DISTRICT 1 DETAIL TC-10
FOR ADDITIONAL INFORMATION



STAGE 2



- LEGEND:
- WORK AREA
 - SIGN ON PERMANENT OR PORTABLE SUPPORT
 - DRUM/BARRICADE WITH STEADY BURN MONODIRECTIONAL LIGHT
 - TYPE III BARRICADE
 - ARROW BOARD
 - IMPACT ATTENUATORS, TEMPORARY (SEVERE USE, NARROW TEST LEVEL 3 (RELOCATED))

NOTE: REFER TO HIGHWAY STANDARD 701431 FOR PLACEMENT OF ADVANCED WARNING SIGNS AND MONODIRECTIONAL LIGHTS.

COORDINATE FINAL PLACEMENT OF ADVANCE WARNING SIGNS WITH THE ENGINEER.

STAGE 2

FILE NAME = G:\projects\2102195_004\CADD\Civil\Sheet\0160863-13aht-mat2.dgn



USER NAME = 2PIENID	DESIGNED - DJB	REVISED -
DRAWN - ENTRAN	REVISOR -	REVISION -
CHECKED - TMH	REVISOR -	REVISION -
DATE - 06/15/11	REVISOR -	REVISION -

STATE OF ILLINOIS
DEPARTMENT OF TRANSPORTATION

FAI ROUTE 57 (INTERSTATE 57) AT FAU ROUTE 3778 (CRAWFORD AVENUE)
MAINTENANCE OF TRAFFIC - STAGE 2

SCALE: 50.00' / IN. SHEET NO. OF SHEETS STA. TO STA.

F.A.I. RTE.	SECTION	COUNTY	TOTAL SHEETS	SHEET NO.
57	1112.B	COOK	75	16
CONTRACT NO. 60863			ILLINOIS FED. AID PROJECT	