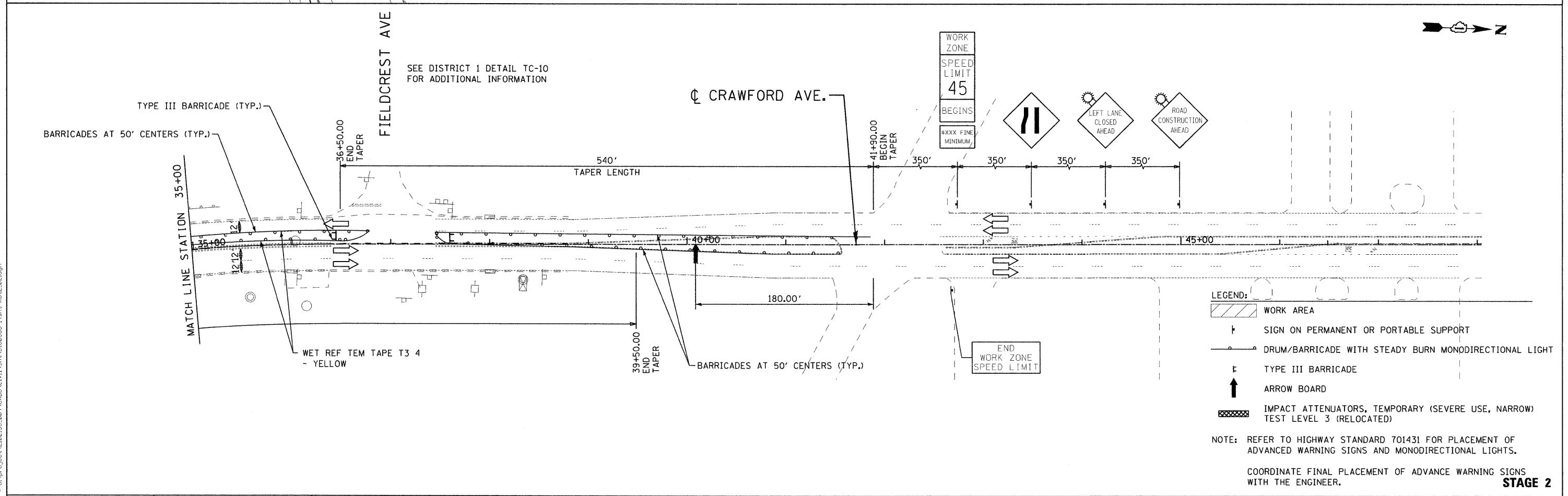


**STAGE 2**



- LEGEND:**
- WORK AREA
  - SIGN ON PERMANENT OR PORTABLE SUPPORT
  - DRUM/BARRICADE WITH STEADY BURN MONODIRECTIONAL LIGHT
  - TYPE III BARRICADE
  - ARROW BOARD
  - IMPACT ATTENUATORS, TEMPORARY (SEVERE USE, NARROW TEST LEVEL 3 (RELOCATED))

NOTE: REFER TO HIGHWAY STANDARD 701431 FOR PLACEMENT OF ADVANCED WARNING SIGNS AND MONODIRECTIONAL LIGHTS.

COORDINATE FINAL PLACEMENT OF ADVANCE WARNING SIGNS WITH THE ENGINEER.

**STAGE 2**

FILE NAME = G:\pcc\sect\2182185\_2041\CADD\G.v11\Shvt\0168263-14htr.mxd.dwg



USER NAME = 2PIENTD	DESIGNED - DJB	REVISED -
PLOT SCALE = 50.00' / IN.	DRAWN - ENTRAN	REVISED -
PLOT DATE = 8/17/2011	CHECKED - TMH	REVISED -
	DATE - 06/15/11	REVISED -

**STATE OF ILLINOIS  
DEPARTMENT OF TRANSPORTATION**

**FAI ROUTE 57 (INTERSTATE 57) AT FAU ROUTE 3778 (CRAWFORD AVENUE)  
MAINTENANCE OF TRAFFIC - STAGE 2**

F.A.I. RTE. 57	SECTION 1112.B	COUNTY COOK	TOTAL SHEETS 75	SHEET NO. 17
SCALE: 50.00' / IN. SHEET NO. OF SHEETS STA. TO STA.			CONTRACT NO. 60863	
FED. ROAD DIST. NO. 1 ILLINOIS FED. AID PROJECT				