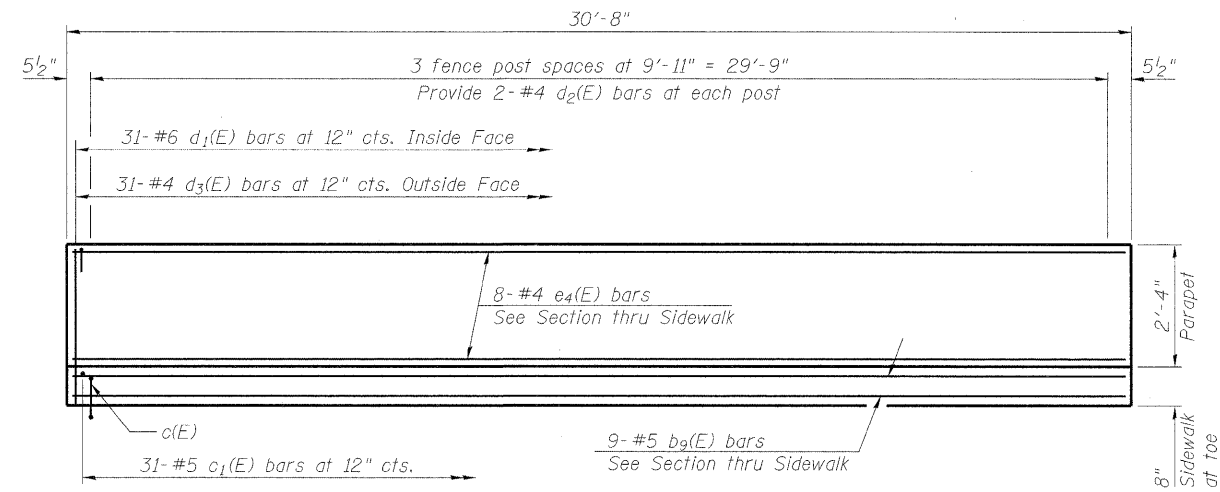
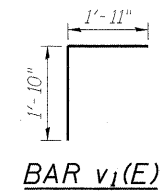


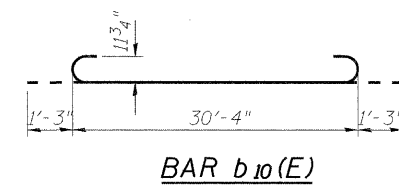
SECTION THRU SIDEWALK



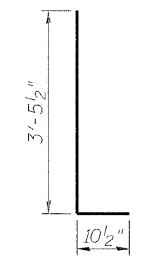
INSIDE ELEVATION OF PARAPET AND SIDEWALK



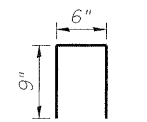
BAR v1(E)



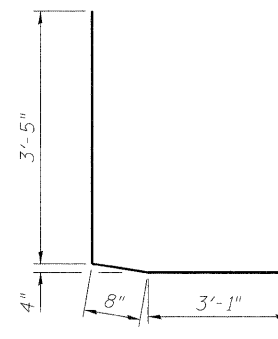
BAR b10(E)



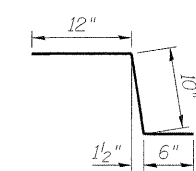
BAR d1(E)



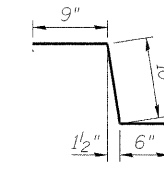
BAR d2(E)



BAR d3(E)



BAR c(E)



BAR c3(E)

VAULTED SPAN
BILL OF MATERIAL

Bar	No.	Size	Length	Shape
a7(E)	42	#5	34'-10"	—
a8(E)	94	#5	32'-11"	—
a9(E)	47	#5	2'-2"	—
b9(E)	81	#5	30'-4"	—
b10(E)	130	#9	32'-10"	U
b11(E)	8	#8	30'-4"	—
c(E)	62	#5	2'-4"	U
c1(E)	62	#5	7'-0"	—
c2(E)	31	#5	3'-6"	—
c3(E)	62	#5	2'-1"	U
d1(E)	62	#6	4'-4"	L
d2(E)	16	#4	2'-0"	n
d3(E)	62	#4	7'-2"	L
e4(E)	16	#4	30'-4"	—
v1(E)	70	#5	4'-9"	Γ
Reinforcement Bars, Epoxy Coated			Pound	24,830
Concrete Superstructure			Cu. Yd.	142.8

FILE NAME = g:\projects\2102185_204\load\structure\shk\016\016_08063.dwg



USER NAME = Zsayerb	DESIGNED - TWO	REVISED -
PLOT SCALE = N/A	CHECKED - BHS	REVISED -
PLOT DATE = 8/5/2011	DRAWN - TWO	REVISED -
	CHECKED - CSP	REVISED -

STATE OF ILLINOIS
DEPARTMENT OF TRANSPORTATION

VAULTED ABUTMENT APPROACH SPAN (2 OF 2)
STRUCTURE NO. 016-1015

SHEET NO. 518 OF 36 SHEETS

F.A.I. RTE. 57	SECTION 1112.1B	COUNTY COOK	TOTAL SHEETS 75	SHEET NO. 45
FED. ROAD DIST. NO. 1 ILLINOIS FED. AID PROJECT			CONTRACT NO. 60863	