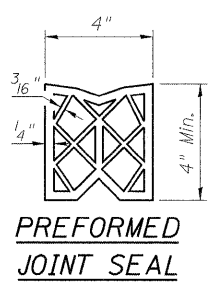
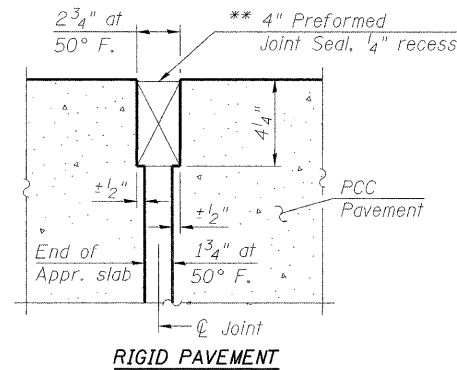
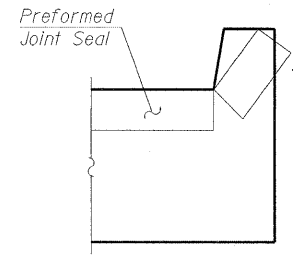
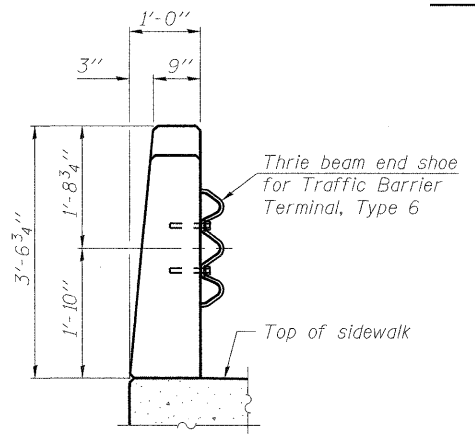


Notes:
 See Sheet S21 for Sections C-C & D-D.
 $a_{11}(E)$ thru $a_{14}(E)$ bar spacings measured along C.R.
 Order $a_{13}(E)$ thru $a_{16}(E)$, $b_{12}(E)$ and $b_{13}(E)$ bars full length. Cut
 in field to fit Type B Inlet Box, Hwy. Standard 609006.

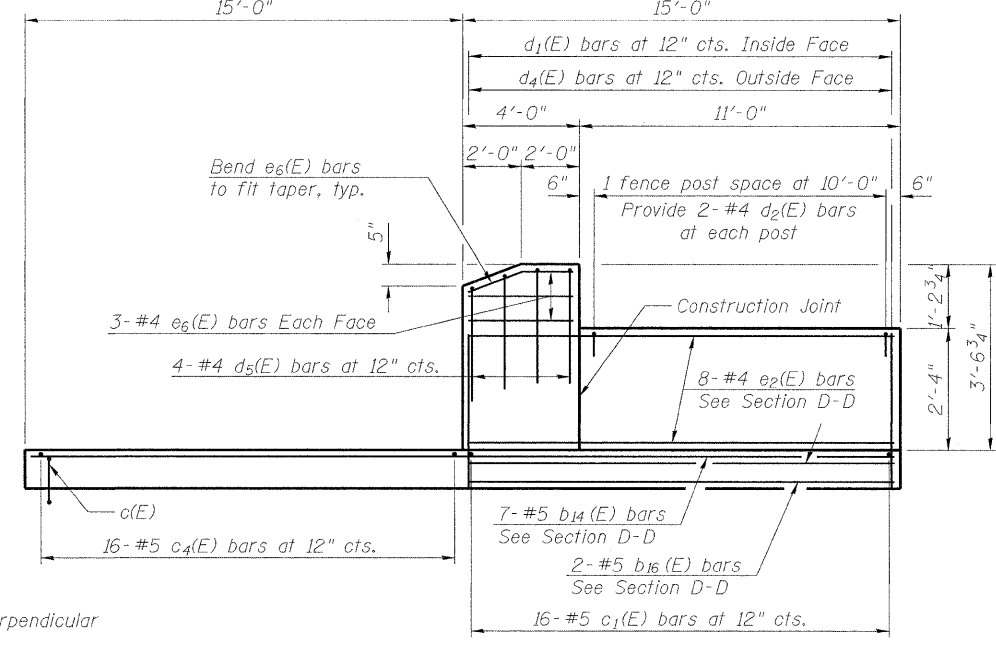


DETAIL A

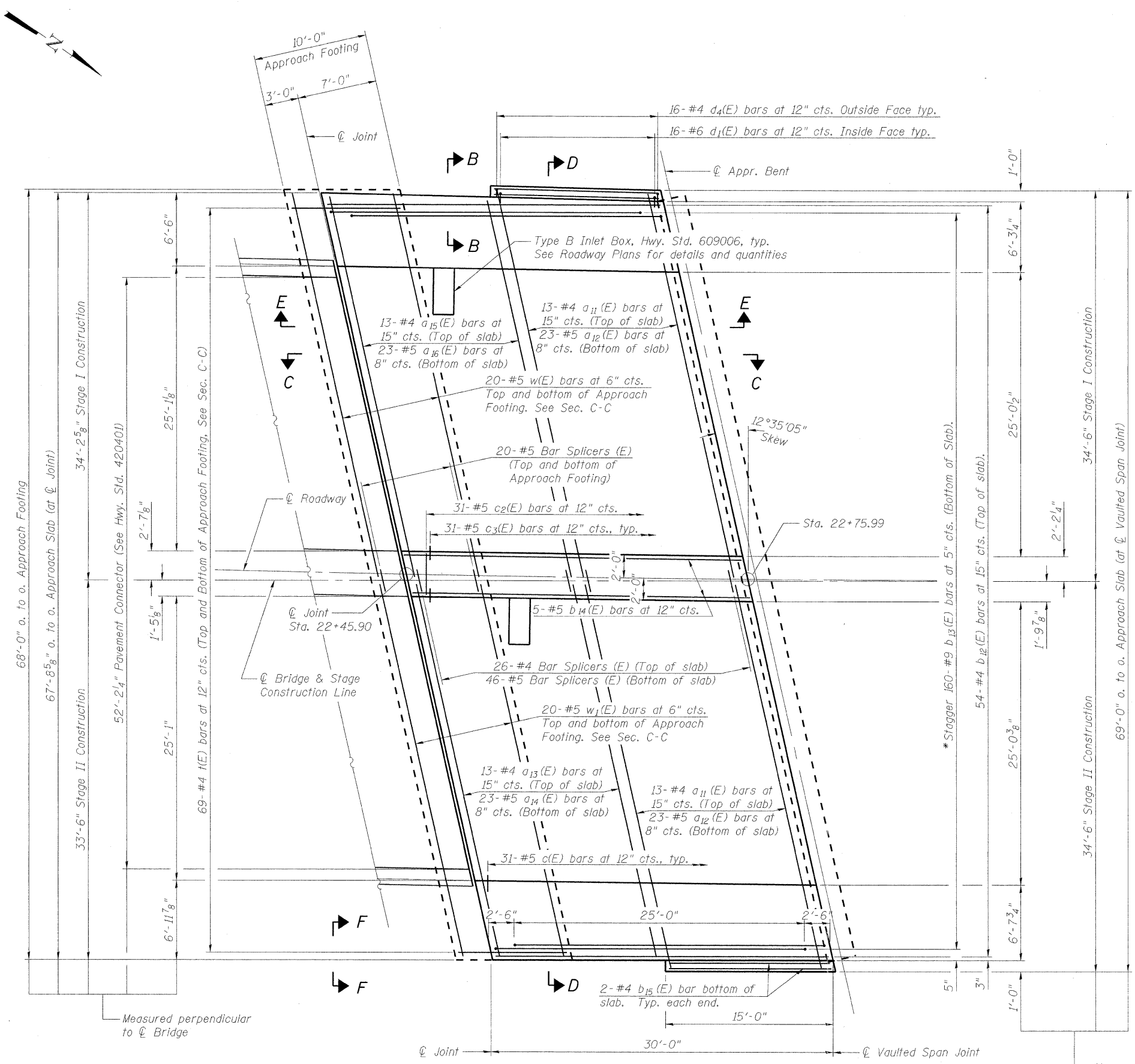


Angle Preformed Joint Seal at 45° at curbs and parapet when req'd for drainage.

VIEW B-B



VIEW E-E



PLAN

* Tilt #9 $b_{13}(E)$ bars as required to maintain clearance.
 ** Cost included with Concrete Superstructure.

FILE NAME = g:\projects\2102195_B04\road\structure\sh\1\0161015_60863_019_3_Approach.dgn



USER NAME = Zsagerb	DESIGNED - TWO	REVISOR -
PLOT SCALE = N/A	CHECKED - BHS	REVISOR -
PLOT DATE = 8/5/2011	DRAWN - TWO	REVISOR -
	CHECKED - GSP	REVISOR -

DESIGNED - TWO	REVISOR -
CHECKED - BHS	REVISOR -
DRAWN - TWO	REVISOR -
CHECKED - GSP	REVISOR -

STATE OF ILLINOIS
 DEPARTMENT OF TRANSPORTATION

SOUTH APPROACH SLAB
 STRUCTURE NO. 016-1015

SHEET NO. S19 OF 36 SHEETS

F.A.I. RTE.	SECTION	COUNTY	TOTAL SHEETS	SHEET NO.
57	1112.1B	COOK	75	46

CONTRACT NO. 60863
 FED. ROAD DIST. NO. 1 ILLINOIS FED. AID PROJECT