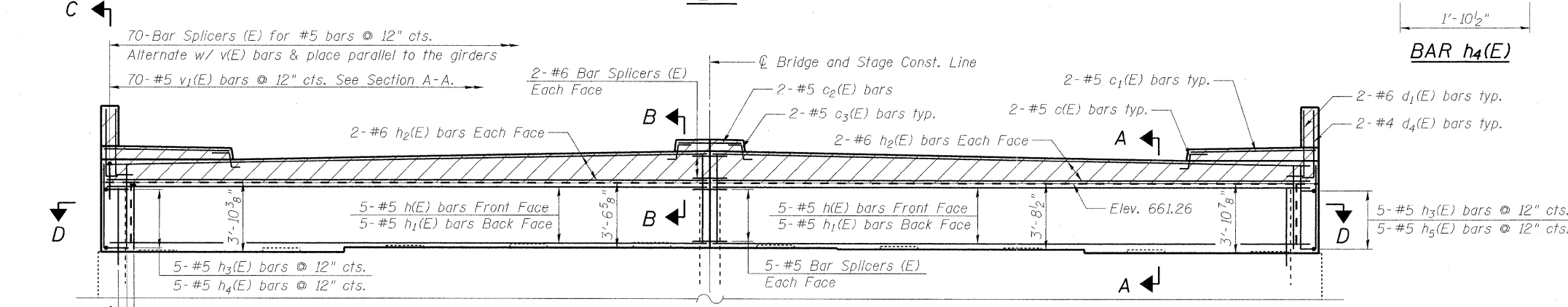
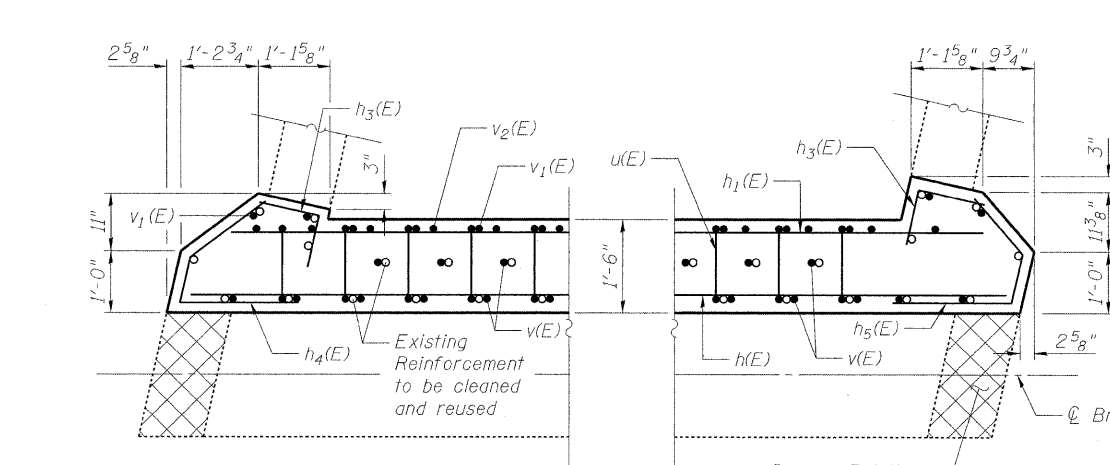


PLAN

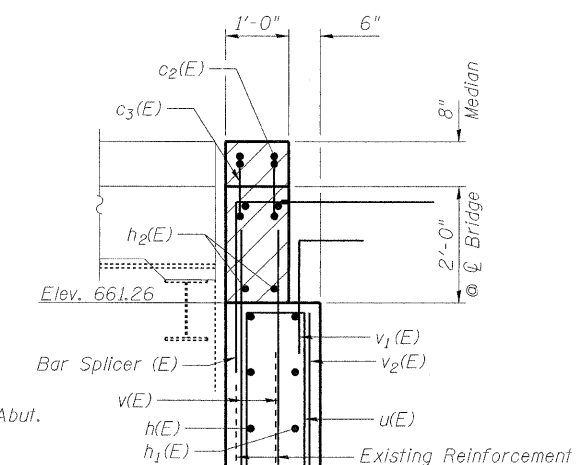


ELEVATION

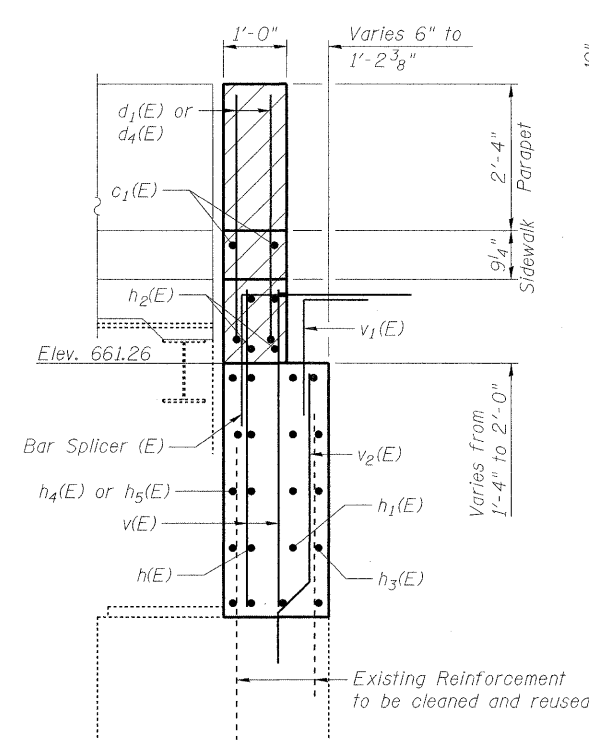
70-#5 v<sub>1</sub>(E) bars @ 12" cts. See Section A-A.  
 70-#5 v<sub>1</sub>(E) bars @ 12" cts. See Section A-A.  
 2-#6 Bar Splicers (E) Each Face  
 2-#5 c<sub>2</sub>(E) bars  
 2-#5 c<sub>3</sub>(E) bars typ.  
 2-#5 c<sub>1</sub>(E) bars typ.  
 2-#6 d<sub>1</sub>(E) bars typ.  
 2-#4 d<sub>4</sub>(E) bars typ.  
 5-#5 h<sub>3</sub>(E) bars @ 12" cts.  
 5-#5 h<sub>4</sub>(E) bars @ 12" cts.  
 68-#5 u(E) bars @ 12" cts.  
 72-#4 v(E) bars @ 12" cts. Each Face  
 Drill and Grout 72-#4 v<sub>2</sub>(E) bars @ 12" cts. Back Face Alternate w/ existing bars  
 Cost included with Reinforcement Bars, Epoxy Coated



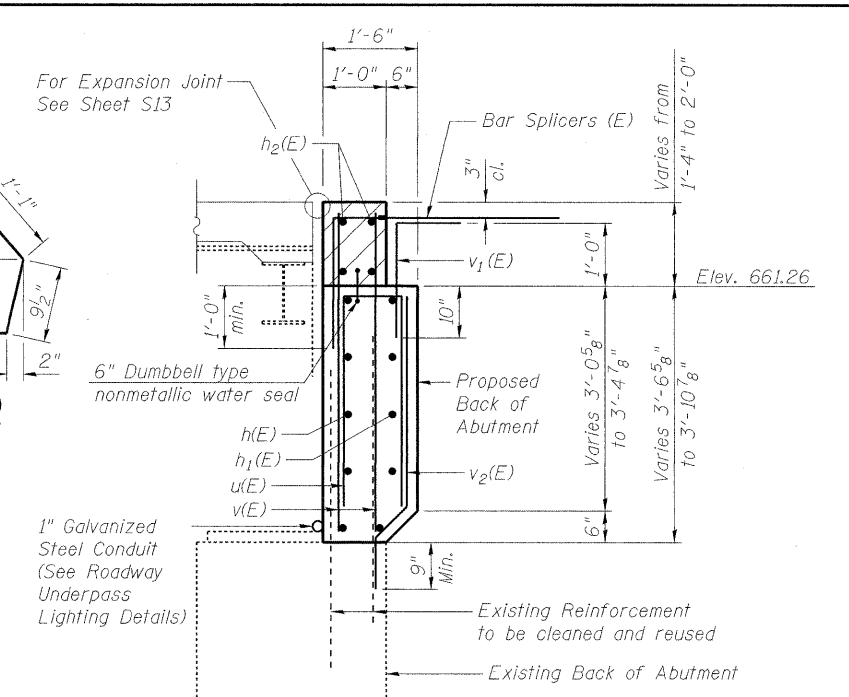
SECTION D-D



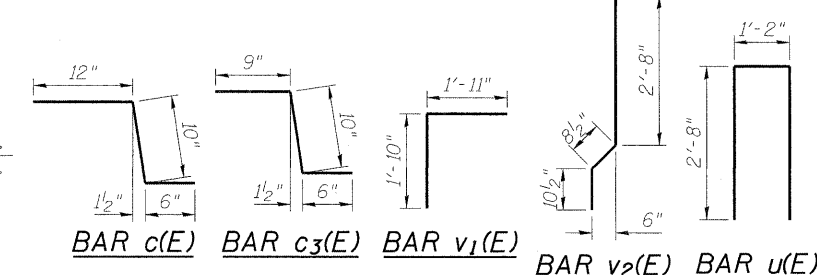
SECTION B-B



SECTION C-C



SECTION A-A



NORTH ABUTMENT  
BILL OF MATERIAL

Bar	No.	Size	Length	Shape	
c(E)	4	#5	2'-4"	┌	
c <sub>1</sub> (E)	4	#5	7'-0"	—	
c <sub>2</sub> (E)	2	#5	3'-6"	—	
c <sub>3</sub> (E)	4	#5	2'-1"	┌	
d <sub>1</sub> (E)	4	#6	4'-4"	┌	
d <sub>4</sub> (E)	4	#4	4'-6"	┌	
h(E)	10	#5	35'-2"	—	
h <sub>1</sub> (E)	10	#5	34'-9"	—	
h <sub>2</sub> (E)	8	#6	35'-2"	—	
h <sub>3</sub> (E)	10	#5	1'-8"	┌	
h <sub>4</sub> (E)	5	#5	4'-0"	┌	
h <sub>5</sub> (E)	5	#5	3'-9"	┌	
u(E)	68	#5	6'-6"	┌	
v(E)	144	#4	4'-10"	—	
v <sub>1</sub> (E)	70	#5	4'-9"	┌	
v <sub>2</sub> (E)	72	#4	4'-3"	—	
Reinforcement Bars, Epoxy Coated				Pound	2,780
Concrete Structures				Cu. Yd.	14.7
Concrete Superstructure				Cu. Yd.	5.1

FILE NAME = g:\projects\2102155\_004\road\structure\abnt\1015\_60863\_028\_N\_Abutment\_2.dgn



USER NAME = 2sagarb  
 PLOT SCALE = N/A  
 PLOT DATE = 8/5/2011

DESIGNED - TWO  
 CHECKED - BHS  
 DRAWN - TWO  
 CHECKED - GSP

REVISED -  
 REVISED -  
 REVISED -  
 REVISED -

STATE OF ILLINOIS  
 DEPARTMENT OF TRANSPORTATION

NORTH ABUTMENT BACKWALL RECONSTRUCTION  
 STRUCTURE NO. 016-1015  
 SHEET NO. S28 OF 36 SHEETS

F.A.I. RTE. 57	SECTION 1112.1B	COUNTY COOK	TOTAL SHEETS 75	SHEET NO. 55
FED. ROAD DIST. NO. 1 ILLINOIS FED. AID PROJECT			CONTRACT NO. 60863	