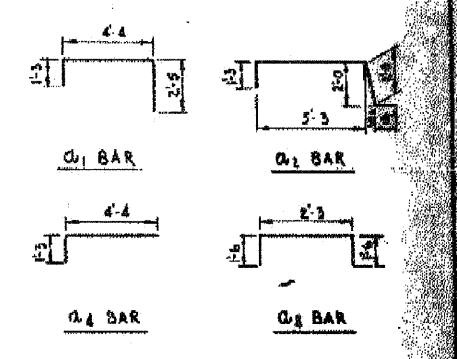


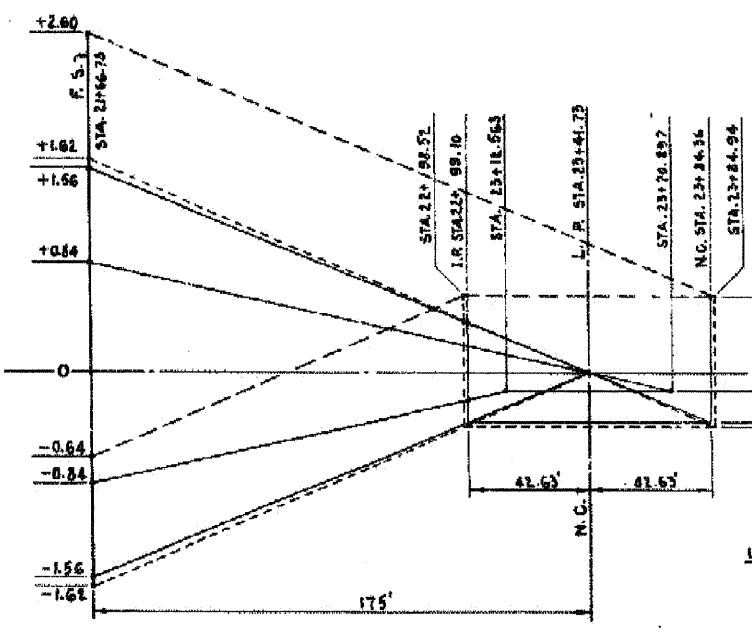
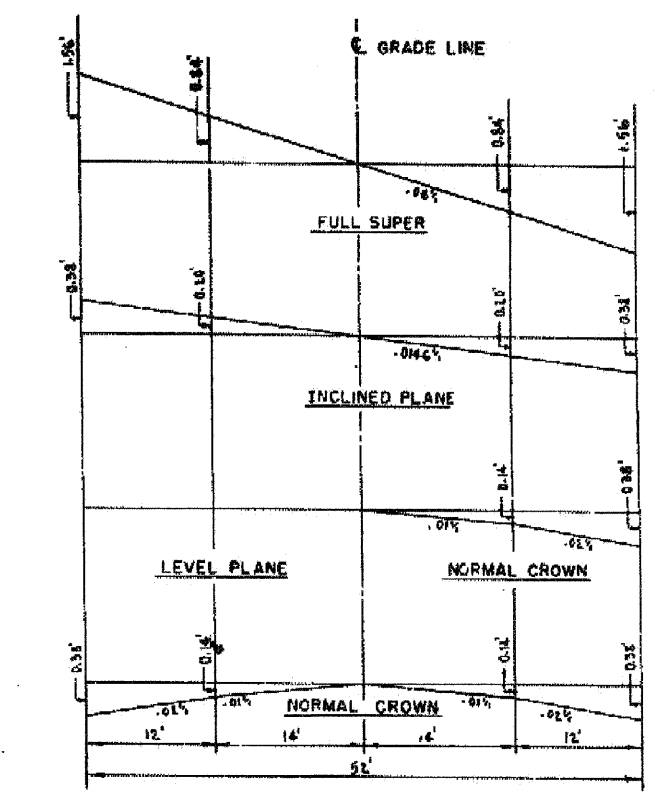
COURTY PROJ. NO.	
ITEM No.	
DATE	
NO.	

BAR SCHEDULE					
MARK	NO.	SIZE	LENGTH	SKETCH	LOCATION
Q1	2	#5	8'-0"		TOP SIDEWALK
Q2	60	#5	9'-3"		TOP SLAB
Q3	60	#5	15'-2"		TOP SLAB
Q4	2	#7	5'-7"		BOTT. SIDEWALK
Q5	60	#7	6'-2"		BOTT. SLAB
Q6	31	#7	25'-0"		BOTT. SLAB
Q7	31	#7	35'-10"		BOTT. SLAB
Q8	30	#5	5'-3"		MESIAN
b1	67	#5	15'-8"		TOP SLAB
b2	12	#5	30'-4"		TOP SIDEWALK
b3	120	#10	28'-3"		BOTT. SLAB
b4	18	#10	34'-0"		BOTT. SIDEWALK

BILL OF MATERIAL		
CLASS "X" CONCRETE	113.5	CU YD
REINFORCEMENT BARS	24,420.0	LB
LONGITUDINAL CURB EXPANSION JOINT	90.0	LN. FT.
PROTECTIVE COAT	236.0	SQ. YD.



LEGEND:
 N.C. NORMAL CROWN
 L.P. LEVEL PLANE
 I.P. INCLINED PLANE
 F.S. FULL SUPERELEVATION



METHOD OF ATTAINING SUPERELEVATION
 SCALES: HOR. 1"=30'
 VER. 1"=7'

DEPARTMENT OF HIGHWAYS
 COOK COUNTY, ILLINOIS

RICHARD B. ORLINE
 COUNTY BOARD OF COMMISSIONERS

ANDREW V. PLUMMER
 SUPERVISOR OF PROJECTS

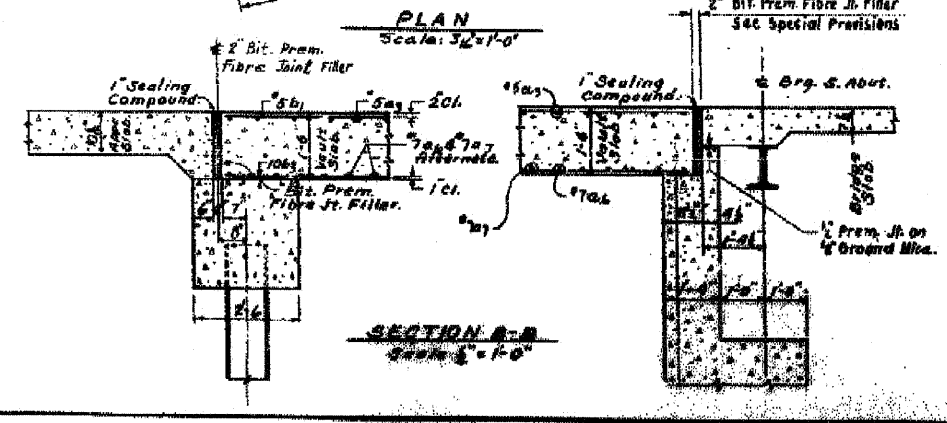
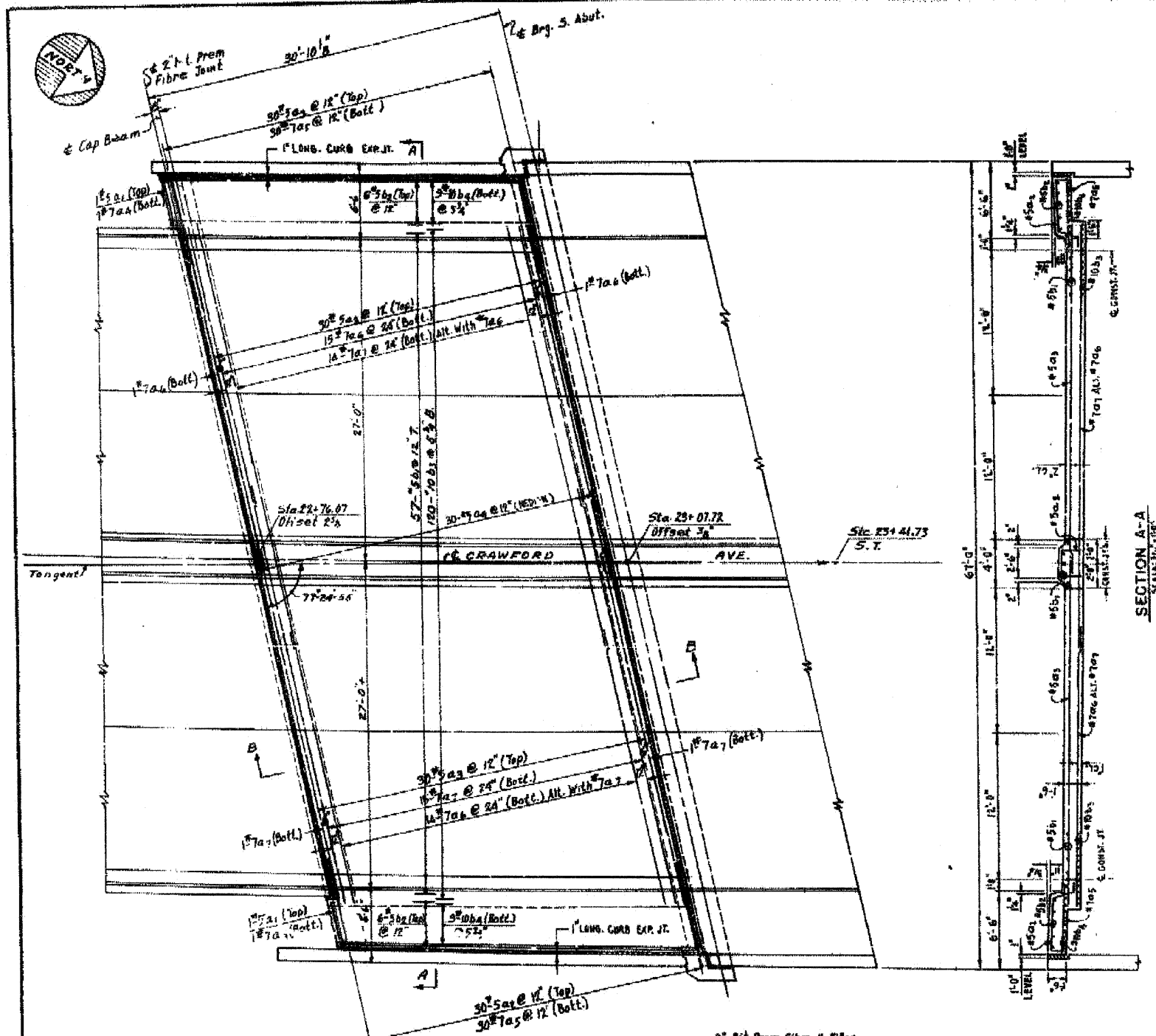
DETAILS OF VAULT SUPERSTRUCTURE
 CRAWFORD AVE GRADE SEPARATION
 OVER
 DAN RYAN EXPRESSWAY - WEST LEG

PROJECT: 1-57-1041349
 SUBMITTED: May 18, 1967

COMPILED	BY	DATE
CHECKED	BY	DATE
DRAWN	BY	DATE
CHECKED	BY	DATE

57 068-112.1 5 69 S.R.1241-1

REVISIONS		
DATE	BY	DESCRIPTION



FILE NAME = g:\projects\2102105_004\roads\structure\sketch\161015_60863_033.Existing_3.dgn



USER NAME = 2sagarb	DESIGNED - TWO	REVISED -
PLOT SCALE = N/A	CHECKED - BHS	REVISED -
PLOT DATE = 6/5/2011	DRAWN - TWO	REVISED -
	CHECKED - GSP	REVISED -

STATE OF ILLINOIS
 DEPARTMENT OF TRANSPORTATION

EXISTING BRIDGE PLANS (3 OF 6)
 STRUCTURE NO. 016-1015
 SHEET NO. S33 OF 36 SHEETS

F.A.T. RTE.	SECTION	COUNTY	TOTAL SHEETS	SHEET NO.
57	1112.1B	COOK	75	60
FED. ROAD DIST. NO. 1 ILLINOIS FED. AID PROJECT			CONTRACT NO. 60863	