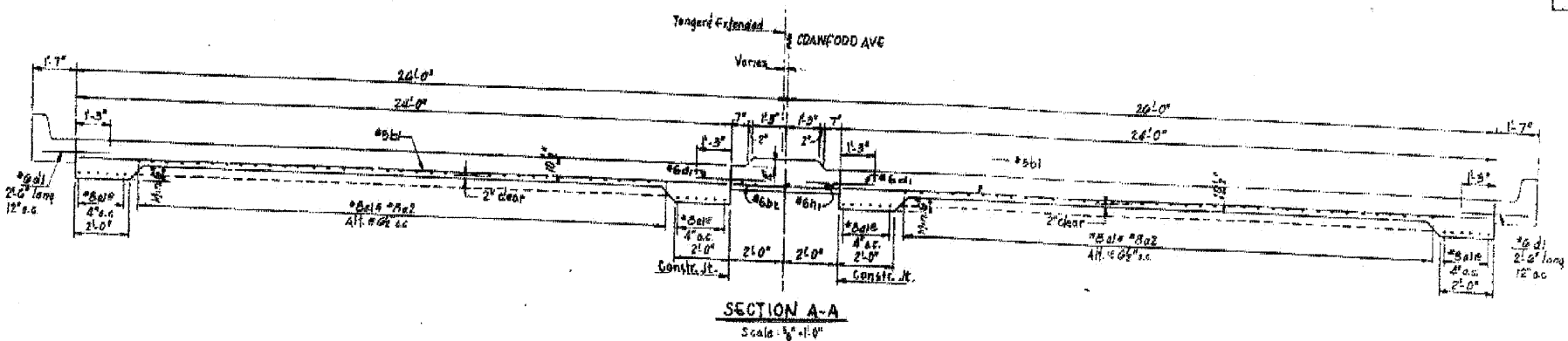
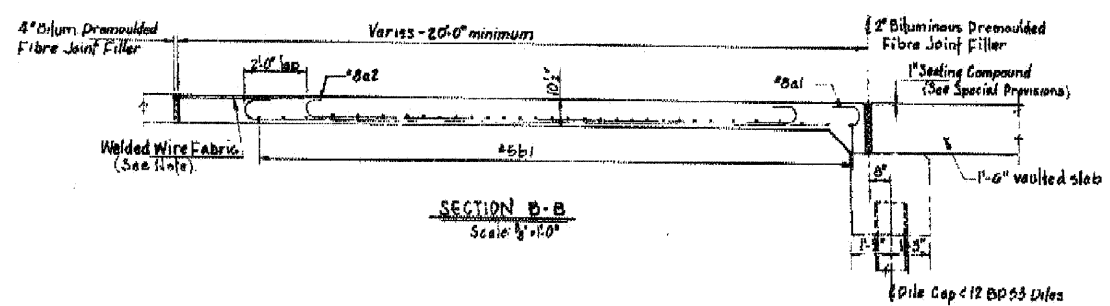


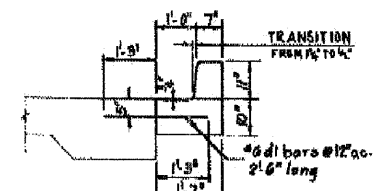
PLAN OF SOUTH APPROACH SLAB
 Scale: 1/4" = 1'-0"



SECTION A-A
 Scale: 1/8" = 1'-0"



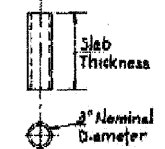
SECTION B-B
 Scale: 1/8" = 1'-0"



DETAIL OF CURB & GUTTER
 Scale: 1/2" = 1'-0"

WELDED WIRE FABRIC NOTE
 Expanded Metal weighing not less than 70 lbs. per 100 sq. ft. or a Welded Bar Mat weighing not less than 70 lbs. per 100 sq. ft. having members of equal size in both directions and spaced not over 8" apart, may be used instead of the #2 Welded Wire Fabric, #2 x 6", provided the Expanded Metal or Bar Mat is furnished at no additional cost to the County.

NOTE:
 Adjacent to the Approach Slabs, C. & G. dowels shall be #6 deformed bars @ 12" o.c. No extra compensation shall be allowed for these bars nor for any transition C. & G. but they shall be included in the Unit Price Bid for Combination Concrete Curb & Buffer, Type B-RL2



DETAIL OF MUD JACK CYLINDER

Cylinders shall be standard weight black steel pipe. Cylinders shall be filled with clay and clay shall be tamped.

*8a1c *8a2 BARS

Mark No	Size	Length	Sketch	A	B	C	J
21 62	A	21-4		0-10	19-8	10-7	
22 36	A	17-4		0-10	15-8	10-7	
21 64	B	24-3					
22 27	B	3-9					(Median)
21 53	B	2-6					(Median Only)
21 3	B	26-9					(Median)
P.C. Concrete Pavt. (16" 10 1/2" 10 1/2")							
Reinforcement Bars							
Comb Conc C18, Type B-1112							
Protective Coat							

NOTES:
 The Approach Slabs shall be paid for at the Contract Unit Price for P.C. Concrete Pavement (16" 10 1/2" 10 1/2"). The quantities for the Concrete Pile Cap and Piles are included in the Bill of Material on Sheet A-11. The cost of Median Strip shall be paid for at the Contract Unit Price Bid for P.C. Concrete Pavement (16" 10 1/2" 10 1/2"). All reinforcement bars, except the #6 Curb & Buffer Dowels, shall be included in the Contract Unit Price for Reinforcement Bars. The #6 Curb & Buffer Dowels shall be included in the Contract Unit Price for Combination Concrete Curb & Buffer, Type B-RL2. The Welded Wire Fabric, Mud Jack Cylinders and Dremoulded Fibre Joint Filler shall be included in the Contract Unit Price for P.C. Concrete Pavement (16" 10 1/2" 10 1/2"). The Bituminous Dremoulded Fibre Joint Filler shall conform to Section 129 of the Standard Specifications.

DEPARTMENT OF HIGHWAYS
 COOK COUNTY, ILLINOIS
 RICHARD B. DILLON, COUNTY CLERK
 ANDREW V. FLINZBERG, DEPARTMENT OF HIGHWAYS

SOUTH APPROACH SLAB
CRAWFORD AVE GRADE SEPARATION
OVER
DAN RYAN EXPRESSWAY - WEST LEG

COMPUTED: J.C. ROE
 CHECKED: A.P. ROE
 DRAWN: D.P. ROE
 CHECKED: P. ROE

PROJECT I-57-7 (164) 128
 SUBMITTED 2-13-67
 DATE 2-13-67

DATE	BY	DESCRIPTION

ISSUED 10/19/67

Sheet No.	County Project	Sheet No.	Total Sheets	Sheet No.
57	068-112.1	17	69	58 1151-5

FILE NAME: g:\projects\2102155_024\cadd\structure\aha\0161015_00863_025_Existing_5.dgn



USER NAME = Zsagarb
 PLOT SCALE = N/A
 PLOT DATE = 8/5/2011

DESIGNED - TWO
 CHECKED - BHS
 DRAWN - TWO
 CHECKED - GSP

REVISED -
 REVISED -
 REVISED -
 REVISED -

STATE OF ILLINOIS
 DEPARTMENT OF TRANSPORTATION

EXISTING BRIDGE PLANS (5 OF 6)
 STRUCTURE NO. 016-1015
 SHEET NO. S35 OF 36 SHEETS

F.A.I. RTE.	SECTION	COUNTY	TOTAL SHEETS	SHEET NO.
57	1112.1B	COOK	75	62
				CONTRACT NO. 60863
FED. ROAD DIST. NO. 1 ILLINOIS FED. AID PROJECT				