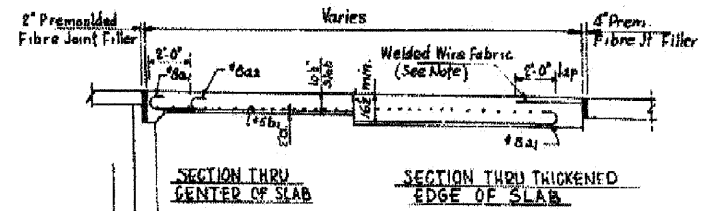


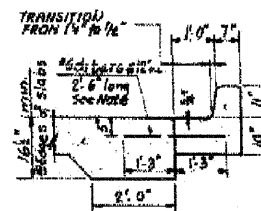
PLAN OF NORTH APPROACH SLAB  
Scale: 3/8" = 1'-0"

NOTE \*  
TRANSITION FROM 1 1/2" TO 1/2"  
BATTER ON FACE OF CURB

**WELDED WIRE FABRIC NOTE**  
Expanded Metal weighing not less than 78 lbs. per 100 sq. ft. or a Welded Bar Mat weighing not less than 78 lbs. per 100 sq. ft., having members of equal size in both directions and spaced not over 8" apart may be used instead of the #2 Welded Wire Fabric, #4's, provided the Expanded Metal or Bar Mat is furnished at no additional cost to the County.

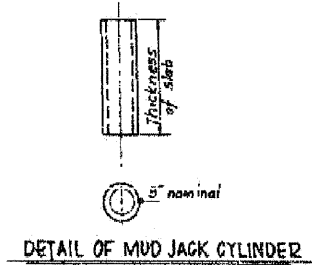


LONGITUDINAL SECTION  
Scale: 1/4" = 1'-0"



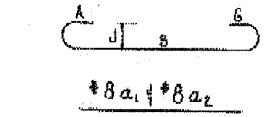
DETAIL OF CURB & GUTTER

NOTE:  
Adjacent to the Approach Slab C/G dowels shall be #6 deformed bars @ 18" o.c. No extra compensation shall be allowed for these bars, nor for any transition C/G but they shall be included in the Unit Price Bid for Combination Concrete Curb and Gutter, Type B II.12.



DETAIL OF MUD JACK CYLINDER

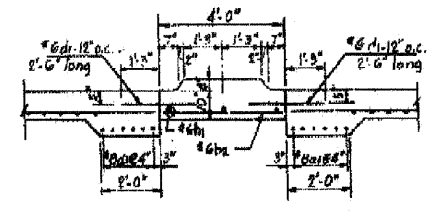
Cylinders shall be standard weight black steel pipe. Cylinders shall be filled with clay and clay shall be tamped.



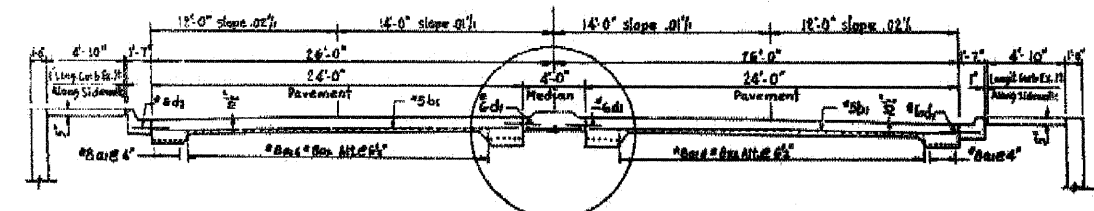
BILL OF MATERIAL									
Start	No	Size	Length	Sketch	A	B	G	J	
62	8	21'-4"			10	19	8	10	7
64	8	17'-4"			10	19	8	10	7
64	5	24'-3"							
64	6	3'-9"							(MEDIAN)
61	6	2'-6"							
7	3	29'-3"							(MEDIAN)
REINFORCEMENT BARS									7,270.0 LBS
P.C. CONCRETE PAV. (16'-10 1/2"-16'-10 1/2")									147.0 CB YD
CONC. C.A.G. TYPE B-II.12									95.0 CB YD
PROTECTIVE COAT									165.0 SQ. YD
LONGITUDINAL CURB EXP. JT.									48.0 SQ. FT.

\* #2-#6 d1 bars not included in weight of reinforcement.

**NOTES:**  
The Approach Slab shall be paid for at the Contract Unit price for P.C. concrete Pavement (16'-10 1/2"-16'-10 1/2").  
The cost of Median Strip shall be paid for at the Contract Unit price for P.C. concrete Pavement (16'-10 1/2"-16'-10 1/2").  
All reinforcement bars, except the #6 curb & gutter dowels shall be included in the Contract Unit Price for Reinforcement Bars.  
The #6 curb & gutter dowels shall be included in the Contract Unit Price for Combination Concrete Curb & Gutter Type B-II.12.  
The Welded Wire Fabric, Mud Jack Cylinders and Preformed Fibre Joint Filler shall be included in the Contract Unit Price for P.C. concrete Pavement (16'-10 1/2"-16'-10 1/2").  
The Preformed Fibre Joint Filler shall conform to Section 129 of the Standard Specifications.



DETAIL A  
Scale: 1/2" = 1'-0"



SECTION A-A  
Scale: 3/8" = 1'-0"

REVISIONS		
DATE	BY	DESCRIPTION

<b>DEPARTMENT OF HIGHWAYS</b> COOK COUNTY, ILLINOIS RICHARD B. QUILVIE PRESIDENT BOARD OF COMMISSIONERS		ANDREW V. PETERMAN SUPERVISOR OF HIGHWAYS	
<b>NORTH APPROACH SLAB</b> <b>CRAWFORD AVE. GRADE SEPARATION</b> <b>OVER</b> <b>DAN RYAN EXPRESSWAY - WEST LEG</b>			
COMPUTED	M. PILAT	PROJECT	1-57-1112-18
DRAWN	M. PILAT	SCALE	
CHECKED	J. PETERMAN	APPROVED	
APPROVED	May 10 1967 Andrew V. Peterman Supervisor of Highways	Federal Aid District	57
		County Highway	068-1112.1
		Sheet No.	18
		Total Sheets	65
		Scale	AS SH.

FILE NAME = g:\projects\2102185\_204\road\structure\slab\0161015\_09863\_0716\_Existing\_6.dgn



USER NAME = zsaarb  
 PLOT SCALE = N/A  
 PLOT DATE = 6/5/2011

DESIGNED - TWO  
 CHECKED - BHS  
 DRAWN - TWO  
 CHECKED - GSP

REVISED -  
 REVISED -  
 REVISED -  
 REVISED -

STATE OF ILLINOIS  
 DEPARTMENT OF TRANSPORTATION

EXISTING BRIDGE PLANS (6 OF 6)  
 STRUCTURE NO. 016-1015

SHEET NO. 536 OF 36 SHEETS

F.A.I. RTE.	SECTION	COUNTY	TOTAL SHEETS	SHEET NO.
57	1112.1B	COOK	75	63
FED. ROAD DIST. NO. 1 ILLINOIS FED. AID PROJECT			CONTRACT NO. 60863	