

Course from PT IL21R8 to PC IL21R9 S 14° 12' 37.12" W Dist 2,059.6043'

Curve Data

**Curve IL21R9**  
 P.I. Station 252+29.11 N 2,056,211.8920 E 1,084,124.3110  
 Delta = 46° 11' 37.70" (LT)  
 Degree = 2° 50' 00.00"  
 Tangent = 862.4139'  
 Length = 1,630.3696'  
 Radius = 2,022.2040'  
 External = 176.2197'  
 Long Chord = 1,586.5703'  
 Mid. Ord. = 162.0944'  
 P.C. Station 243+66.70 N 2,057,047.9171 E 1,084,336.0180  
 P.T. Station 259+97.07 N 2,055,480.3919 E 1,084,581.1100  
 C.C. N 2,056,551.5027 E 1,086,296.3449

Course from PT IL21R9 to PC IL21R10 S 31° 59' 00.58" E Dist 1,506.4984'

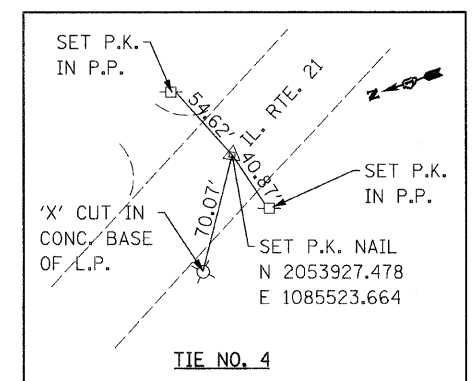
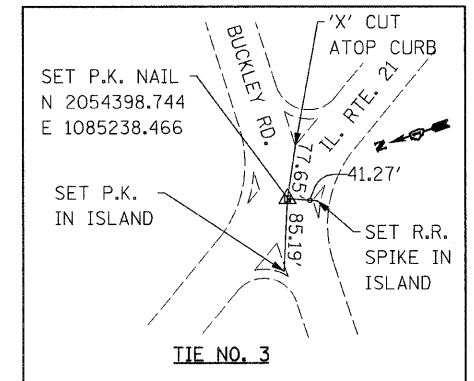
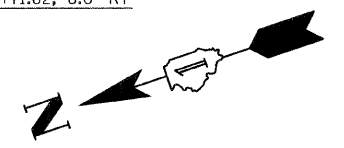
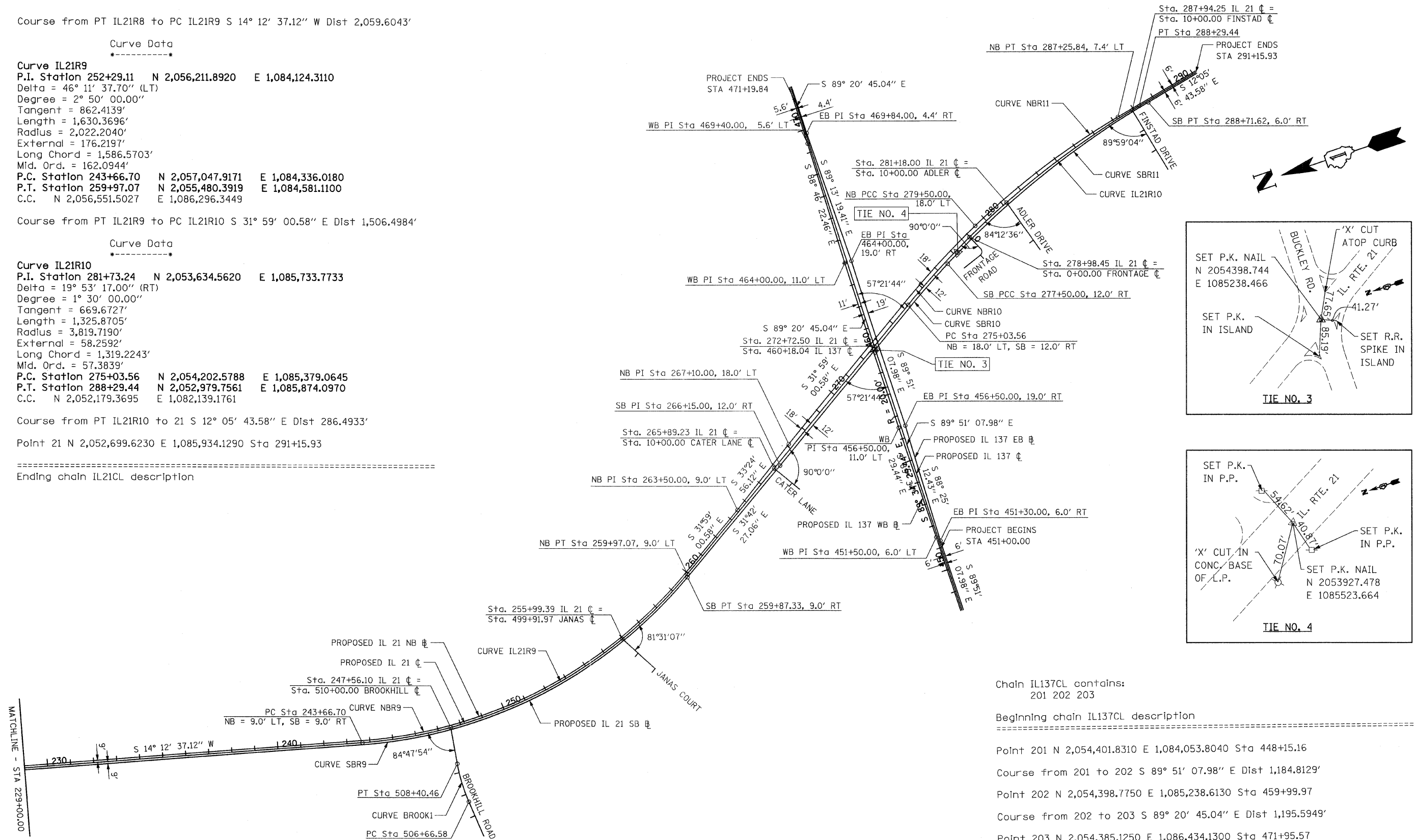
Curve Data

**Curve IL21R10**  
 P.I. Station 281+73.24 N 2,053,634.5620 E 1,085,733.7733  
 Delta = 19° 53' 17.00" (RT)  
 Degree = 1° 30' 00.00"  
 Tangent = 669.6727'  
 Length = 1,325.8705'  
 Radius = 3,819.7190'  
 External = 58.2592'  
 Long Chord = 1,319.2243'  
 Mid. Ord. = 57.3839'  
 P.C. Station 275+03.56 N 2,054,202.5788 E 1,085,379.0645  
 P.T. Station 288+29.44 N 2,052,979.7561 E 1,085,874.0970  
 C.C. N 2,052,179.3695 E 1,082,139.1761

Course from PT IL21R10 to 21 S 12° 05' 43.58" E Dist 286.4933'

Point 21 N 2,052,699.6230 E 1,085,934.1290 Sta 291+15.93

Ending chain IL21CL description



Chain IL137CL contains:  
201 202 203

Beginning chain IL137CL description

Point 201 N 2,054,401.8310 E 1,084,053.8040 Sta 448+15.16  
 Course from 201 to 202 S 89° 51' 07.98" E Dist 1,184.8129'  
 Point 202 N 2,054,398.7750 E 1,085,238.6130 Sta 459+99.97  
 Course from 202 to 203 S 89° 20' 45.04" E Dist 1,195.5949'  
 Point 203 N 2,054,385.1250 E 1,086,434.1300 Sta 471+95.57

Ending chain IL137CL description

FILE NAME =	USER NAME = IDOT	DESIGNED - EJM	REVISED -	<b>STATE OF ILLINOIS DEPARTMENT OF TRANSPORTATION</b>	<b>ALIGNMENT TIES AND BENCHMARKS</b>				F.A.P. RTE.	SECTION	COUNTY	TOTAL SHEETS	SHEET NO.
11102901\cadd sheets\st-align-002.dgn		DRAWN - BK	REVISED -						330	128R-3	LAKE	518	35
		CHECKED - GFL	REVISED -		CONTRACT NO. 60953				FED. ROAD DIST. NO. 1   ILLINOIS FED. AID PROJECT				
		DATE - 12/17/10	REVISED -		SCALE:	SHEET NO.	OF SHEETS	STA.	TO STA.				