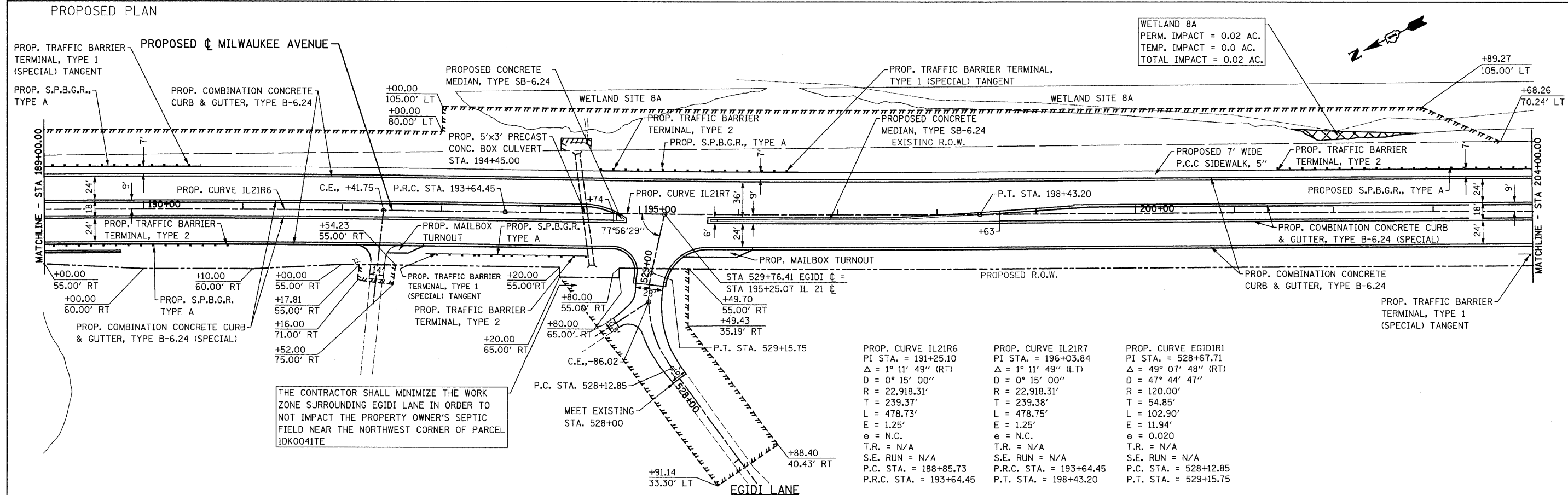


EXISTING PLAN  
PROPOSED PLAN



FILE NAME = u:\102901\cadd sheets\ht-plan02.dgn	USER NAME = IDOT	DESIGNED - EJM	REVISED -	<b>STATE OF ILLINOIS DEPARTMENT OF TRANSPORTATION</b>	<b>ROADWAY PLAN IL RTE 21 (MILWAUKEE AVE)</b>	F.A.P. RTE. = 330	SECTION = 128R-3	COUNTY = LAKE	TOTAL SHEETS = 518	SHEET NO. = 41		
PLOT SCALE = 50.0000' / IN.	CHECKED - GFL	REVISIONS -	SCALE: 1" = 50'			SHEET NO. OF SHEETS	STA. 189+00.00 TO STA. 204+00.00	CONTRACT NO. 60953		ILLINOIS FED. AID PROJECT		
PLOT DATE = 8/11/2011	DATE = 4/30/2011	REVISIONS -										