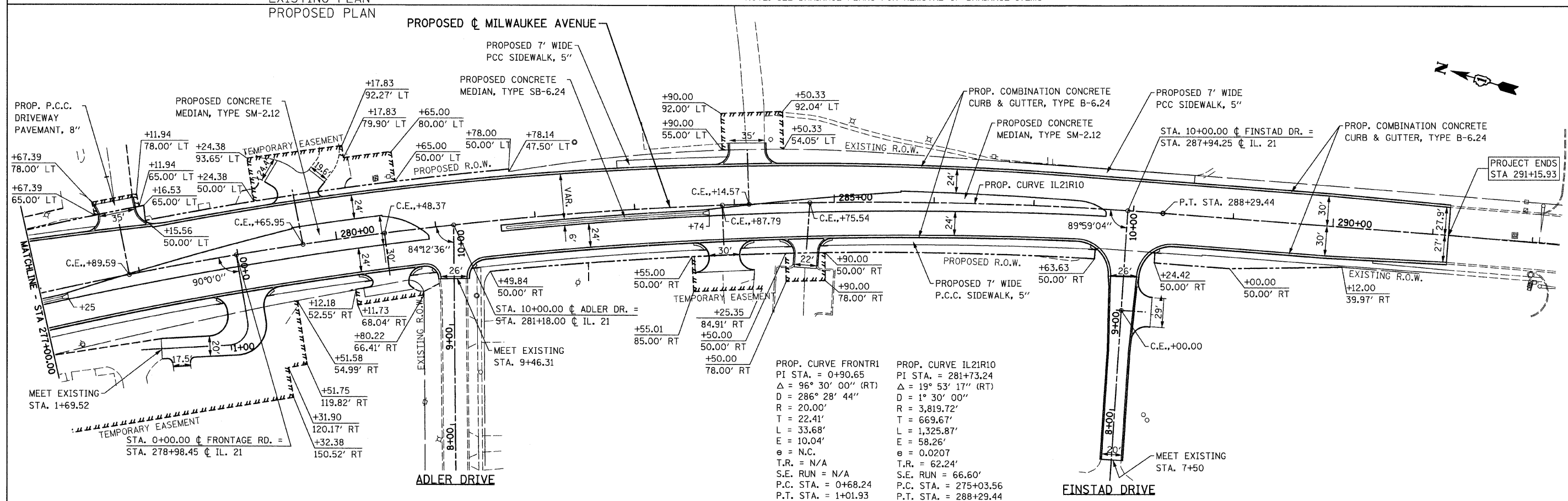


LEGEND

- X REMOVE SIGN PANEL
- REM GR-MT SIGN SUPPORT
- X TREE REMOVAL
- SEE TREE REMOVAL SCHEDULE
- PAVEMENT REMOVAL
- PAVED SHOULDER REMOVAL
- DRIVEWAY PAVEMENT REMOVAL

NOTE: SEE DRAINAGE PLANS FOR REMOVAL OF DRAINAGE ITEMS

EXISTING PLAN
PROPOSED PLAN



PROP. CURVE FRONTR1
 PI STA. = 0+90.65
 Δ = 96° 30' 00" (RT)
 D = 286° 28' 44"
 R = 20.00'
 T = 22.41'
 L = 33.68'
 E = 10.04'
 θ = N.C.
 T.R. = N/A
 S.E. RUN = N/A
 P.C. STA. = 0+68.24
 P.T. STA. = 1+01.93

PROP. CURVE IL21R10
 PI STA. = 281+73.24
 Δ = 19° 53' 17" (RT)
 D = 1° 30' 00"
 R = 3,819.72'
 T = 669.67'
 L = 1,325.87'
 E = 58.26'
 θ = 0.0207
 T.R. = 62.24'
 S.E. RUN = 66.60'
 P.C. STA. = 275+03.56
 P.T. STA. = 288+29.44

FILE NAME =	USER NAME = IDOT	DESIGNED - EJM	REVISED -	STATE OF ILLINOIS DEPARTMENT OF TRANSPORTATION	ROADWAY PLAN IL RTE 21 (MILWAUKEE AVE)	F.A.P. RTE.	SECTION	COUNTY	TOTAL SHEETS	SHEET NO.	
11\102901\cadd sheets\sh1-plan08.dgn		DRAWN - BK	REVISED -			330	128R-3	LAKE	518	47	
PLOT SCALE = 50.0000' / IN.		CHECKED - GFL	REVISED -			SCALE: 1" = 50' SHEET NO. OF SHEETS STA. 277+00.00 TO STA. 291+15.93					
PLOT DATE = 8/11/2011		DATE - 4/30/2011	REVISED -			CONTRACT NO. 60953					