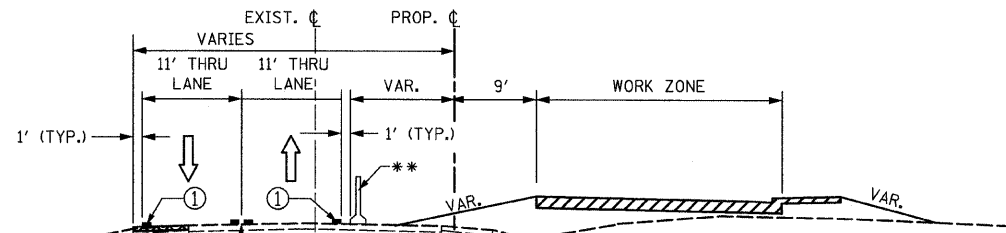
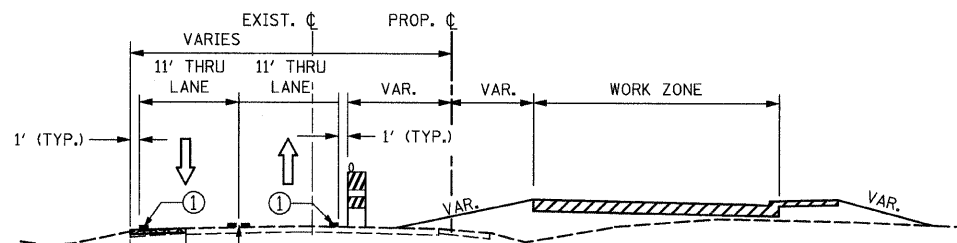


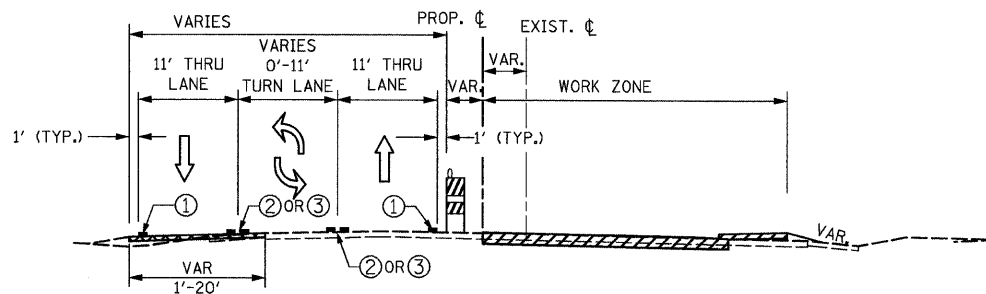
IL. ROUTE 21 TYPICAL SECTION
STA. 175+00.00 TO STA. 218+00.00



IL. ROUTE 21 TYPICAL SECTION
STA. 218+00.00 TO STA. 255+63.00
(BY OTHERS)*



IL. ROUTE 21 TYPICAL SECTION
STA. 255+63.00 TO STA. 266+75.00
(BY OTHERS)*



IL. ROUTE 21 TYPICAL SECTION
STA. 266+75.00 TO STA. 277+15.00

NOTE:

* TEMPORARY PAVEMENT WILL BE REQUIRED:
FROM STA. 223+50± TO STA. 225+00±.

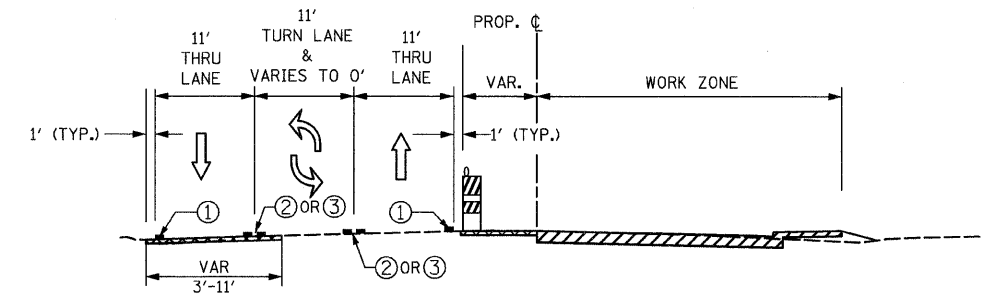
** TEMPORARY CONCRETE BARRIER WILL BE REQUIRED:
- STA. 187+50 TO STA. 189+00
- STA. 193+45 TO STA. 194+70
- STA. 206+50 TO STA. 208+00
- STA. 218+62.5 TO STA. 220+12.5
- STA. 223+50 TO STA. 225+00
- STA. 237+00 TO STA. 238+25
- STA. 248+00 TO STA. 251+25

NOTE:

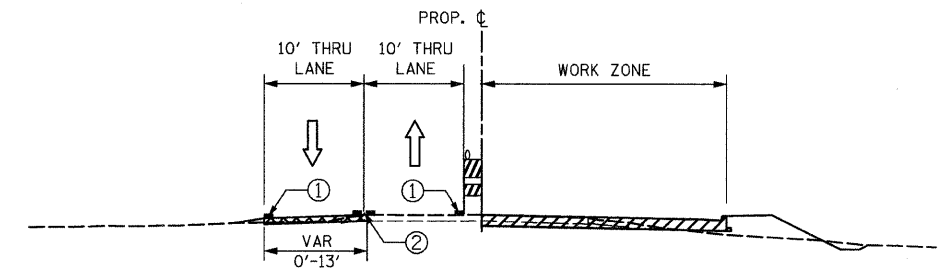
-FOR BULL CREEK BRIDGE MOT (STA. 248+49.50 TO STA. 249+16.61) SEE STRUCTURAL PLANS

LEGEND

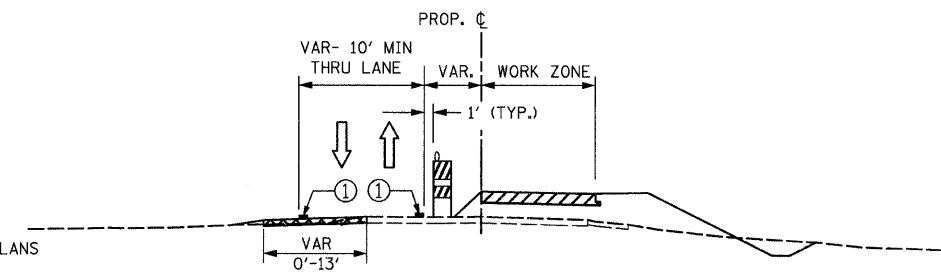
- PAVEMENT CONSTRUCTION
- TEMPORARY PAVEMENT (BUILT IN PRE STAGE)
- NEWLY CONSTRUCTED PAVEMENT (PREVIOUS STAGES)
- TYPE II BARRICADE OR DRUM
- DIRECTION OF TRAFFIC
- VERTICAL PANEL
- TEMPORARY CONCRETE BARRIER
- ① 4" WHITE EDGE LINE
- ② 2-4" YELLOW LANE LINES @ 11" C-C.
- ③ 6" WHITE LANE LINE
- ④ 4" YELLOW EDGE LINE



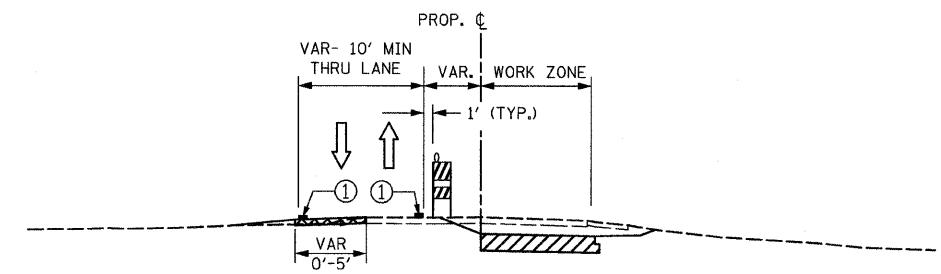
IL. ROUTE 137 TYPICAL SECTION
STA. 451+25.00 TO STA. 471+20.00



CASEY RD TYPICAL SECTION
STA. 513+54.03 TO STA. 519+79.76



BROOKHILL RD TYPICAL SECTION
STA. 507+00.00 TO STA. 509+88.22



FINSTAD DR. TYPICAL SECTION
STA. 7+50.00 TO STA. 9+93.41

FILE NAME = I:\182901\CADD Sheets\stg-staging002.dgn	USER NAME = IDOT	DESIGNED - EJM	REVISED -
PLOT SCALE = 10,0000' / IN.	CHECKED - GFL	DRAWN - BK	REVISED -
PLOT DATE = 8/11/2011	DATE - 12/17/10	CHECKED - GFL	REVISED -

**STATE OF ILLINOIS
DEPARTMENT OF TRANSPORTATION**

**STAGING AND TRAFFIC CONTROL TYPICAL SECTIONS STAGE I
IL RTE 21 (MILWAUKEE AVE)**

SCALE: SHEET NO. OF SHEETS STA. TO STA.

F.A.P. RTE. 330	SECTION 128R-3	COUNTY LAKE	TOTAL SHEETS 518	SHEET NO. 61
CONTRACT NO. 60953				
FED. ROAD DIST. NO. 1 ILLINOIS FED. AID PROJECT				