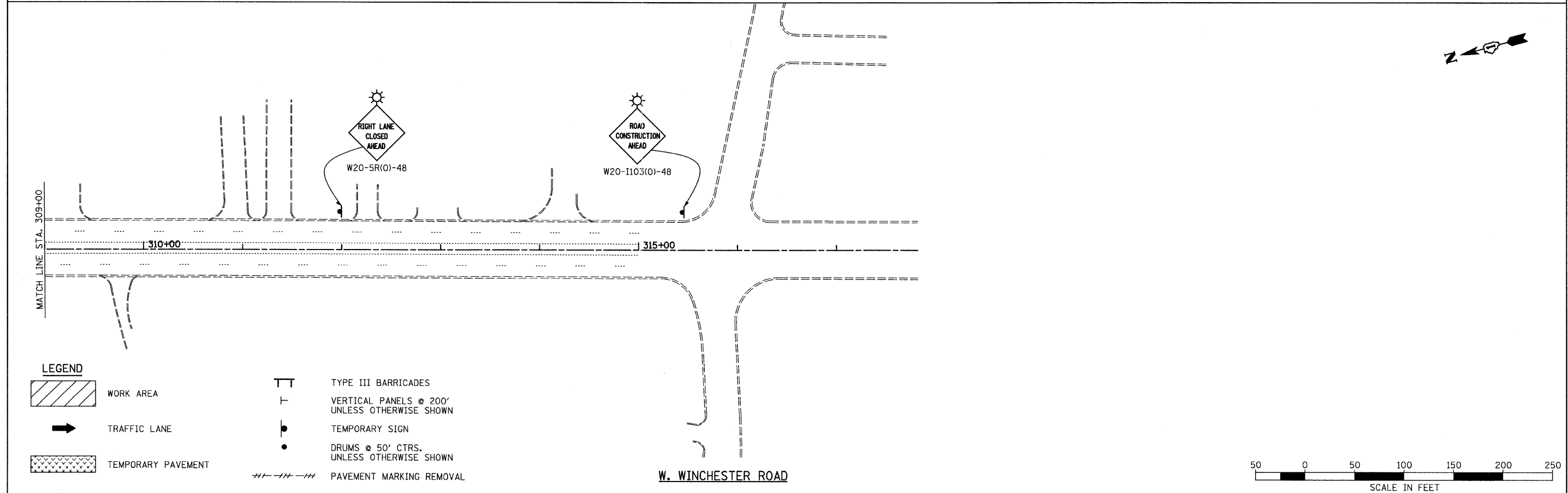

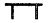

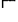
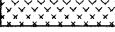


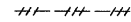
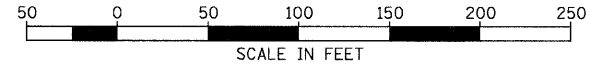


NOTE:
 "WORKERS" SIGN TO BE REMOVED OR COVERED
 WHEN WORKERS ARE NOT PRESENT.



LEGEND

	WORK AREA		TYPE III BARRICADES
	TRAFFIC LANE		VERTICAL PANELS @ 200' UNLESS OTHERWISE SHOWN
	TEMPORARY PAVEMENT		TEMPORARY SIGN
			DRUMS @ 50' CTRS. UNLESS OTHERWISE SHOWN
			PAVEMENT MARKING REMOVAL



FILE NAME = I:\102901\CADD Sheets\stage2-26.dgn	USER NAME = IDOT	DESIGNED - EJM	REVISED -	STATE OF ILLINOIS DEPARTMENT OF TRANSPORTATION	STAGING AND TRAFFIC CONTROL STAGE II IL RTE 21 (MILWAUKEE AVE)			F.A.P. RTE. 330	SECTION 128R-3	COUNTY LAKE	TOTAL SHEETS 518	SHEET NO. 76
	PLOT SCALE = 50.0000' / IN.	DRAWN - BK	REVISED -		SCALE: 1" = 50'	SHEET NO.	OF	SHEETS	STA. 294+00.00 TO STA. 315+00.00	CONTRACT NO. 60953		
	PLOT DATE = 8/11/2011	CHECKED - GFL	REVISED -		ILLINOIS FED. AID PROJECT							
		DATE - 4/30/2011	REVISED -									