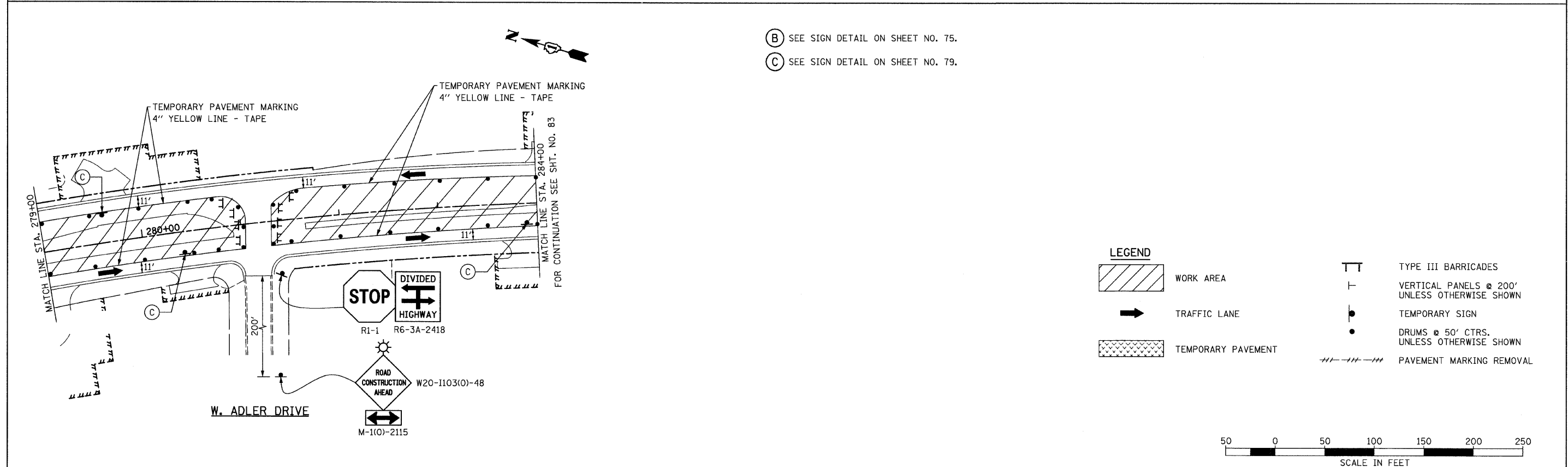
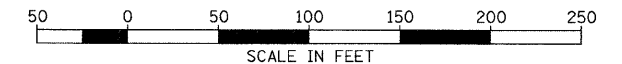


- (B) SEE SIGN DETAIL ON SHEET NO. 75.
- (C) SEE SIGN DETAIL ON SHEET NO. 79.



LEGEND	
	WORK AREA
	TRAFFIC LANE
	TEMPORARY PAVEMENT
	TYPE III BARRICADES
	VERTICAL PANELS @ 200' UNLESS OTHERWISE SHOWN
	TEMPORARY SIGN
	DRUMS @ 50' CTRS. UNLESS OTHERWISE SHOWN
	PAVEMENT MARKING REMOVAL



FILE NAME = I:\102901\CADD Sheets\stage38-02.dgn	USER NAME = IDOT	DESIGNED - EJM	REVISED -	<b>STATE OF ILLINOIS DEPARTMENT OF TRANSPORTATION</b>	<b>STAGING AND TRAFFIC CONTROL STAGE IIIB IL RTE 21 (MILWAUKEE AVE)</b>	F.A.P. RTE. 330	SECTION 128R-3	COUNTY LAKE	TOTAL SHEETS 518	SHEET NO. 86		
PLOT SCALE = 50.0000' / IN.	CHECKED - GFL	REVISIONS	SCALE: 1" = 50'			SHEET NO. OF SHEETS	STA. 264+00.00 TO STA. 284+00.00	ILLINOIS FED. AID PROJECT				
PLOT DATE = 8/11/2011	DATE - 4/30/2011	REVISIONS										
CONTRACT NO. 60953												