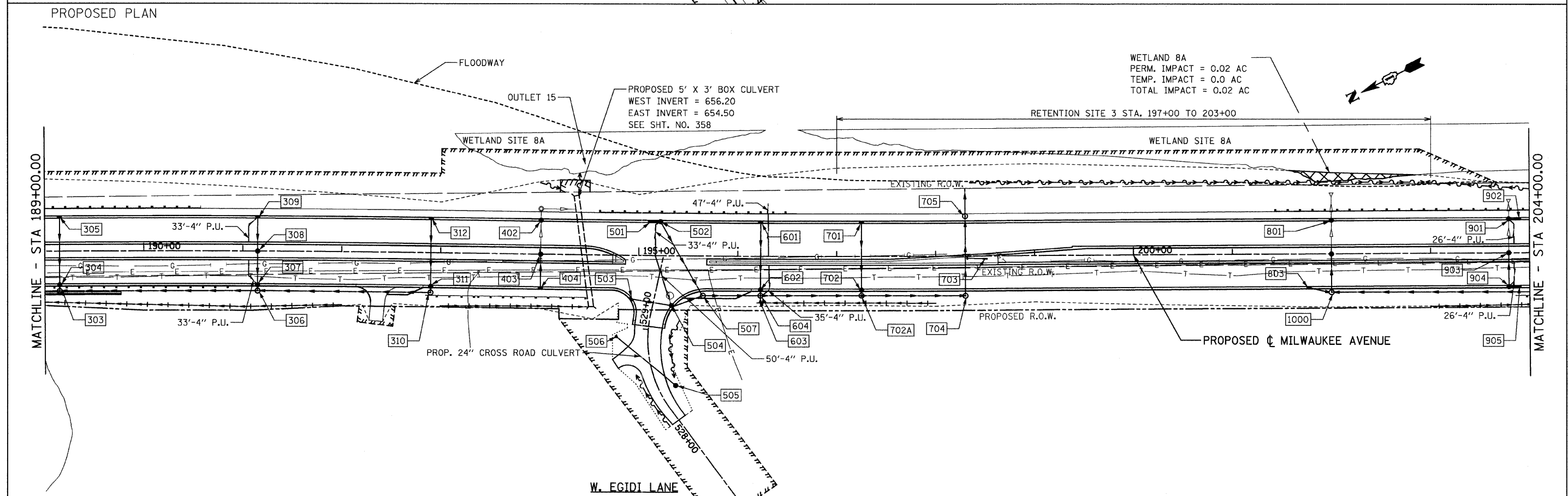


EXISTING PLAN



PROPOSED PLAN

FILE NAME = u:\102901\oedd sheets\ahtr\drain02.dgn	USER NAME = IDDT	DESIGNED - EJM	REVISED -	<b>STATE OF ILLINOIS DEPARTMENT OF TRANSPORTATION</b>	<b>DRAINAGE AND UTILITY PLAN IL RTE 21 (MILWAUKEE AVE)</b>	F.A.P. RTE. 330	SECTION 128R-3	COUNTY LAKE	TOTAL SHEETS 518	SHEET NO. 95		
PLOT SCALE = 50.0000' / IN.	CHECKED - GFL	REVISI ONED -	REVISI ONED -			SCALE: 1" = 50'	SHEET NO. OF SHEETS	STA. 189+00.00 TO STA. 204+00.00	CONTRACT NO. 60953			
PLOT DATE = 8/11/2011	DATE - 4/30/2011	REVISI ONED -	REVISI ONED -			ILLINOIS FED. AID PROJECT						