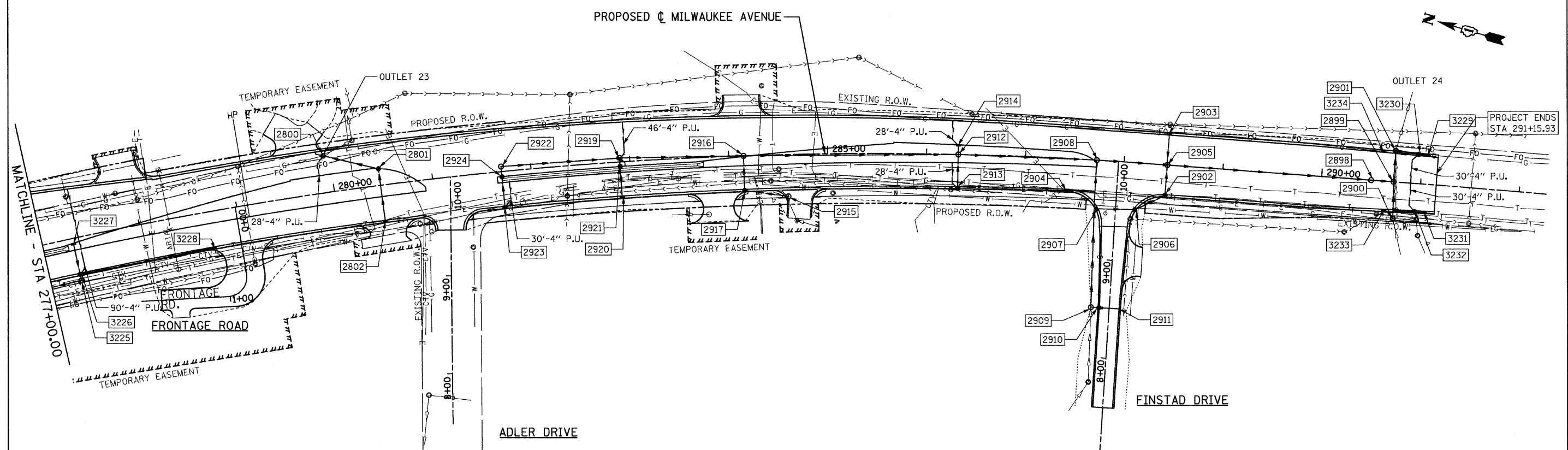


EXISTING PLAN
PROPOSED PLAN



FILE NAME = s:\102901\oadd sheets\ht-drain08.dgn	USER NAME = IDOT	DESIGNED - EJM	REVISED -	STATE OF ILLINOIS DEPARTMENT OF TRANSPORTATION	DRAINAGE AND UTILITY PLAN IL RTE 21 (MILWAUKEE AVE)	F.A.P. RTE. 330	SECTION 128R-3	COUNTY LAKE	TOTAL SHEETS 518	SHEET NO. 101		
PLOT SCALE = 50.0000' / IN.	CHECKED - GFL	REVISIED -	SCALE: 1" = 50'			SHEET NO. OF SHEETS	STA. 277+00.00 TO STA. 291+15.93	CONTRACT NO. 60953		ILLINOIS FED. AID PROJECT		
PLOT DATE = 8/11/2011	DATE - 4/30/2011	REVISIED -										