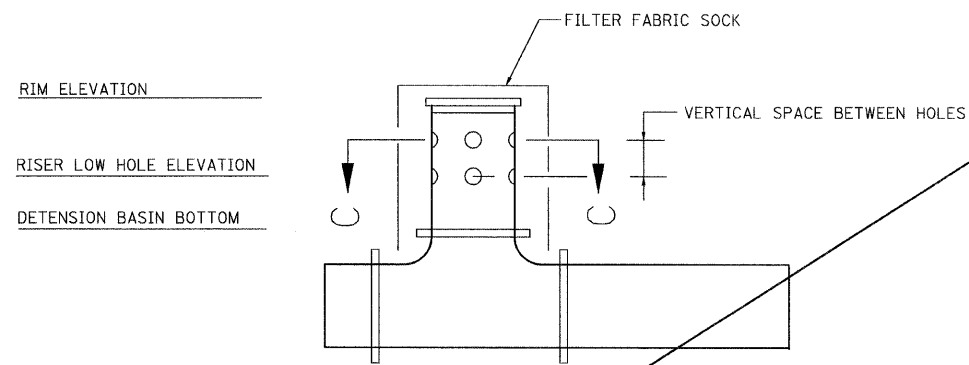
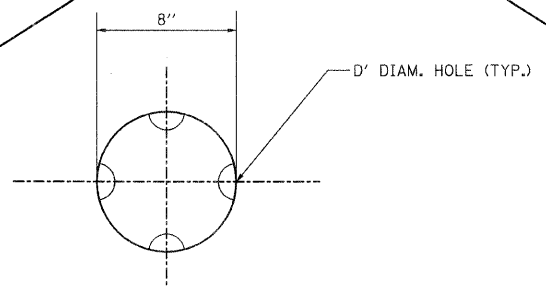


NOTE:
SEE SITE PLAN, PROPOSED DRAINAGE PLAN
AND DRAINAGE SCHEDULE FOR ADDITIONAL INFORMATION

TYPICAL SECTION THROUGH DETENTION BASIN OUTLET STRUCTURES



DETAIL A
PERFORATED STAND PIPE PLAN



SECTION C-C

STORAGE SITE	CONTROL STRUCTURE LOCATION	BOTTOM POND ELEVATION (FT)	2-YR H.W.E. (FT)	100-YR H.W.E. (FT)	DETENTION/RETENTION STORAGE REQUIRED (CU FT)		BERM (FT)	L OR WIDTH OF DITCH CHECK (FT)	RIM ELEV. (FT)	NEENAH GRATE TYPE	PIPE INVERTS (FT)	NO. OF PERFORATIONS	ELEV. OF LOWEST PERFORATION (FT)	VERTICAL/SPACE BETWEEN HOLES	D ORIFICE DIA.
BASIN A	466+40.00LT	665.00	667.70	670.58	35,343	92,070	672.00	NA	667.20	R-2565-F	664.1	8	665.0	1'	3/4"
BASIN B	183+59.71 LT	670.00	670.20	674.10	3,213	71,172	675.00	NA	674.05	R-2565-C	669.0	8	669.5	3'	5/8"

THIS SHEET IS NOT USED

FILE NAME = I:\102901\CADD Sheets\hst-detention-detail.dgn	USER NAME = IDOT	DESIGNED - PDK	REVISED -	STATE OF ILLINOIS DEPARTMENT OF TRANSPORTATION	OUTLET STRUCTURE DETAILS DETENTION BASIN OUTLET A AND B	F.A.P. RTE. = 330	SECTION = 128R-3	COUNTY = LAKE	TOTAL SHEETS = 518	SHEET NO. = 106
PLOT SCALE = 5/8" = 1' / IN.	CHECKED - MRH	REVISED -	CONTRACT NO. 60953							
PLOT DATE = 7/8/2011	DATE = 12/17/10	REVISED -	ILLINOIS FED. AID PROJECT							
SCALE: SHEET NO. OF SHEETS STA. TO STA.										