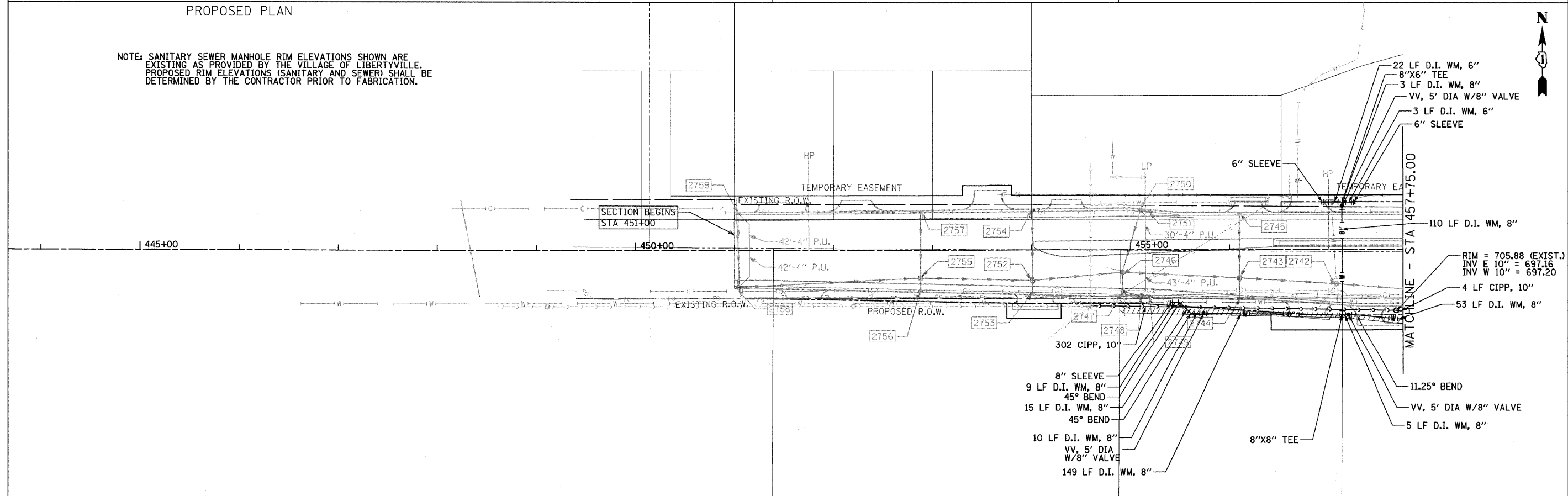


NOTE: SANITARY SEWER MANHOLE RIM ELEVATIONS SHOWN ARE EXISTING AS PROVIDED BY THE VILLAGE OF LIBERTYVILLE. PROPOSED RIM ELEVATIONS (SANITARY AND SEWER) SHALL BE DETERMINED BY THE CONTRACTOR PRIOR TO FABRICATION.



FILE NAME =	USER NAME = esidorczuk	DESIGNED - EJM	REVISED -	STATE OF ILLINOIS DEPARTMENT OF TRANSPORTATION	WATER MAIN AND SANITARY SEWER PLAN IL RTE 137 (BUCKLEY RD)	F.A.P. RTE.	SECTION	COUNTY	TOTAL SHEETS	SHEET NO.	
N:\LIBERTYVILLE\110094\Civil\shtr\drain09.dgn		DRAWN - BK	REVISED -			330	128R-3	LAKE	127		
PLOT SCALE = 50'		CHECKED - GFL	REVISED -			SCALE: 1" = 50'		SHEET NO. OF SHEETS		STA. 444+90.00 TO STA. 457+75.00	CONTRACT NO. 60953
PLOT DATE = 8/8/2011		DATE - 2/28/2011	REVISED -			ILLINOIS FED. AID PROJECT					