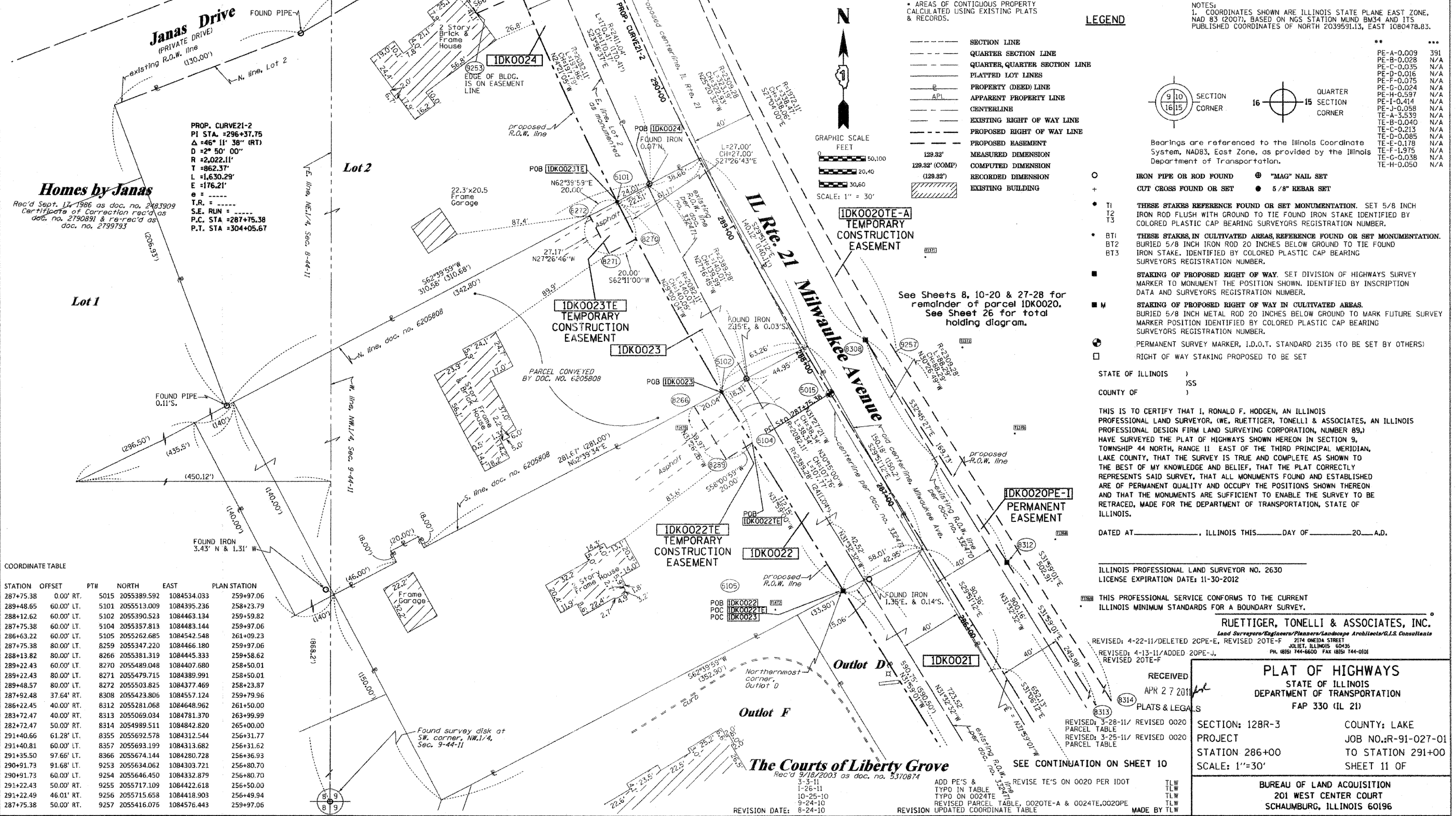


PART OF THE NW1/4 OF SECTION 9, TWP. 44 N., R. 11 E. OF THE 3RD. P.M., IN LAKE COUNTY, ILLINOIS.
 SEE CONTINUATION ON SHEET 12

REFERENCE TABLE

FROM	BEARING	ANGLE	DISTANCE	TO	DESCRIPTION
5015	SE 77 49'24"		122.91	1370	5/8" REBAR WITH YELLOW CAP
5015	NE 35 17'24"		107.20	1371	5/8" REBAR WITH YELLOW CAP
5015	SW 79 13'15"		93.66	1475	5/8" REBAR WITH YELLOW CAP
5105	NE 47 51'58"		160.53	1370	5/8" REBAR WITH YELLOW CAP
5105	SW 74 35'41"		46.10	1472	5/8" REBAR WITH YELLOW CAP
5105	NW 42 32'55"		148.51	1475	5/8" REBAR WITH YELLOW CAP
8308	SE 58 12'56"		114.17	1370	5/8" REBAR WITH YELLOW CAP
8308	NE 36 05'17"		65.94	1371	5/8" REBAR WITH YELLOW CAP
8308	SE 85 24'52"		83.22	1372	5/8" REBAR WITH YELLOW CAP
8312	NE 65 14'53"		34.69	1368	5/8" REBAR WITH YELLOW CAP
8312	SE 59 22'23"		55.94	1369	5/8" REBAR WITH YELLOW CAP
8312	NE 03 36'40"		82.77	1370	5/8" REBAR WITH YELLOW CAP
8357	NW 85 48'55"		123.37	1377	5/8" REBAR WITH YELLOW CAP
8357	NW 33 31'38"		77.25	1378	5/8" REBAR WITH YELLOW CAP
8357	NE 55 24'13"		140.02	1379	5/8" REBAR WITH YELLOW CAP

PARCEL NUMBER	OWNER	TOTAL HOLDINGS ACRES	PART TAKEN ACRES	AREA IN EXISTING R.O.W. ACRES	REMAINDER AREA ACRES	EASEMENT ACRES	EASEMENT AREA SQUARE FEET	EASEMENT PURPOSE	PERMANENT INDEX NUMBER	PROPERTY ACQUIRED BY
IDK0020	LAKE COUNTY FOREST PRESERVE DISTRICT	802.4±	0.000	N/A	802.4±	**	***	PROP. ROW CONST.	11-09-100-001 thru 11-04-300-003, 11-04-300-010, 11-04-300-013, 11-04-100-005	
IDK0021	LIBERTY GROVE LLC, F/K/A THE COURTS OF LIBERTY GROVE, LLC	0.854	0.854	0.643	N/A	N/A	N/A	N/A	11-09-100-020	
IDK0022	MICHAEL A. FENNEWALD & PAMELA FENNEWALD	1.210	0.209	0.154	1.001	0.018	N/A	CONST.	11-09-100-008	
IDK0023	THOMAS D. EVANS, JR. & CAROL H. EVANS, AS TRUSTEES OF THE CAROL H. EVANS LIVING TRUST	1.556	0.202	0.137	1.354	0.012	N/A	CONST.	11-09-100-021	
IDK0024	EDITH SIEG & WILLIAM M. LYERLY	1.368	0.114	N/A	1.254	0.038	N/A	CONST.	11-08-201-092	



COORDINATE TABLE

STATION	OFFSET	PTH	NORTH	EAST	PLAN STATION
287+75.38	0.00' RT.	5015	2055389.592	1084534.033	259+97.06
289+48.65	60.00' LT.	5101	2055513.009	1084395.236	258+23.79
288+12.62	60.00' LT.	5102	2055390.523	1084463.134	259+59.82
287+75.38	60.00' LT.	5104	2055357.813	1084483.144	259+97.06
286+63.22	60.00' LT.	5105	2055262.685	1084542.548	261+09.23
287+75.38	80.00' LT.	8259	2055347.220	1084466.180	259+97.06
288+13.82	80.00' LT.	8266	2055381.319	1084445.333	259+58.62
289+22.43	60.00' LT.	8270	2055489.048	1084407.680	258+50.01
289+22.43	80.00' LT.	8271	2055479.715	1084389.991	258+50.01
289+48.57	80.00' LT.	8272	2055503.825	1084377.469	258+23.87
287+92.48	37.64' RT.	8308	2055423.806	1084557.124	259+79.96
286+22.45	40.00' RT.	8312	2055281.068	1084648.962	261+50.00
283+72.47	40.00' RT.	8313	2055069.034	1084781.370	263+99.99
282+72.47	50.00' RT.	8314	2054989.511	1084842.820	265+00.00
291+40.66	61.28' LT.	8355	2055692.578	1084312.544	256+31.77
291+40.81	60.00' LT.	8357	2055693.199	1084313.682	256+31.62
291+35.50	97.66' LT.	8366	2055674.144	1084280.728	256+36.93
290+91.73	91.68' LT.	9253	2055634.062	1084303.721	256+80.70
290+91.73	60.00' LT.	9254	2055646.450	1084332.879	256+80.70
291+22.43	50.00' RT.	9255	2055717.109	1084422.618	256+50.00
291+22.49	46.01' RT.	9256	2055715.658	1084418.903	256+49.94
287+75.38	50.00' RT.	9257	2055416.076	1084576.443	259+97.06

LEGEND

- SECTION LINE
- QUARTER SECTION LINE
- QUARTER QUARTER SECTION LINE
- PLATTED LOT LINES
- PROPERTY (DEED) LINE
- APPARENT PROPERTY LINE
- CENTERLINE
- EXISTING RIGHT OF WAY LINE
- PROPOSED RIGHT OF WAY LINE
- PROPOSED EASEMENT
- MEASURED DIMENSION
- COMPUTED DIMENSION
- RECORDED DIMENSION
- EXISTING BUILDING

GRAPHIC SCALE: 1" = 30'

NOTES:

- COORDINATES SHOWN ARE ILLINOIS STATE PLANE EAST ZONE, NAD 83 (2007), BASED ON NGS STATION MUND, BM34 AND ITS PUBLISHED COORDINATES OF NORTH 2039591.13, EAST 1080478.83.

BEARINGS ARE REFERENCED TO THE ILLINOIS COORDINATE SYSTEM, NAD83, EAST ZONE, AS PROVIDED BY THE ILLINOIS DEPARTMENT OF TRANSPORTATION.

STATE OF ILLINOIS)
 COUNTY OF LAKE)

THIS IS TO CERTIFY THAT I, RONALD F. HODGEN, AN ILLINOIS PROFESSIONAL LAND SURVEYOR, (WE, RUETTIGER, TONELLI & ASSOCIATES, AN ILLINOIS PROFESSIONAL DESIGN FIRM LAND SURVEYING CORPORATION, NUMBER 89,) HAVE SURVEYED THE PLAT OF HIGHWAYS SHOWN HEREON IN SECTION 9, TOWNSHIP 44 NORTH, RANGE 11 EAST OF THE THIRD PRINCIPAL MERIDIAN, LAKE COUNTY, THAT THE SURVEY IS TRUE AND COMPLETE AS SHOWN TO THE BEST OF MY KNOWLEDGE AND BELIEF, THAT THE PLAT CORRECTLY REPRESENTS SAID SURVEY, THAT ALL MONUMENTS FOUND AND ESTABLISHED ARE OF PERMANENT QUALITY AND OCCUPY THE POSITIONS SHOWN THEREON AND THAT THE MONUMENTS ARE SUFFICIENT TO ENABLE THE SURVEY TO BE RETRACED, MADE FOR THE DEPARTMENT OF TRANSPORTATION, STATE OF ILLINOIS.

DATED AT _____, ILLINOIS THIS _____ DAY OF _____, 20____ A.D.

ILLINOIS PROFESSIONAL LAND SURVEYOR NO. 2630
 LICENSE EXPIRATION DATE: 11-30-2012

THIS PROFESSIONAL SERVICE CONFORMS TO THE CURRENT ILLINOIS MINIMUM STANDARDS FOR A BOUNDARY SURVEY.

RECEIVED
 APR 27 2011
 PLATS & LEGALS

RUETTIGER, TONELLI & ASSOCIATES, INC.
 Land Surveyors/Engineers/Planners/Landscape Architects/G.I.S. Consultants
 2174 ONIDA STREET
 DEPT. ILLINOIS 60935
 PH. (618) 744-6600 FAX (618) 744-0101

REVISED: 4-22-11/DELETED 20PE-E, REVISED 20TE-F
 REVISED: 4-13-11/ADDED 20PE-J, REVISED 20TE-F

REVISED: 3-28-11/ REVISED 0020 PARCEL TABLE
 REVISED: 3-25-11/ REVISED 0020 PARCEL TABLE

REVISE TE'S ON 0020 PER IDOT
 ADD PE'S & TYPO IN TABLE
 TYPO ON 0024TE
 REVISED PARCEL TABLE, 0020TE-A & 0024TE,0020PE
 REVISION UPDATED COORDINATE TABLE
 REVISION DATE: 8-24-10
 MADE BY TLW

PLAT OF HIGHWAYS
 STATE OF ILLINOIS
 DEPARTMENT OF TRANSPORTATION
 FAP 330 (IL 21)

SECTION: 128R-3 COUNTY: LAKE
 PROJECT: JOB NO. R-91-027-01
 STATION 286+00 TO STATION 291+00
 SCALE: 1"=30' SHEET 11 OF

BUREAU OF LAND ACQUISITION
 201 WEST CENTER COURT
 SCHAUMBURG, ILLINOIS 60196