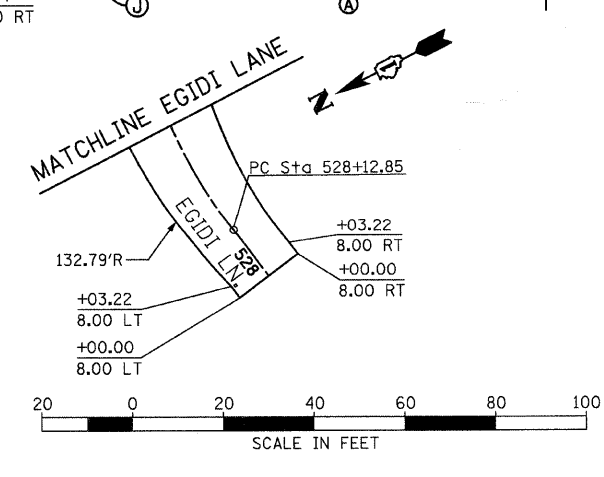


- LEGEND**
- (A) COMBINATION CONCRETE CURB & GUTTER, TYPE B-6.24
  - (B) COMBINATION CONCRETE CURB & GUTTER, TYPE B-6.24 (SPECIAL)
  - (C) COMBINATION CONCRETE CURB & GUTTER, TYPE B-6.12
  - (D) CONCRETE MEDIAN SURFACE, 4"
  - (E) CONCRETE MEDIAN, TYPE M-2.12
  - (F) TRAFFIC BARRIER TERMINAL, TYPE 1 (SPECIAL) TANGENT
  - (G) TRAFFIC BARRIER TERMINAL, TYPE 2
  - (H) TRAFFIC BARRIER TERMINAL, TYPE 6
  - (I) STEEL PLATE BEAM GUARDRAIL, TYPE A, 9 FOOT POST
  - (J) CONCRETE MEDIAN, TYPE SB-6.24

- LEGEND**
- ROADWAY
  - SAWED LONGITUDINAL JOINT (IDOT 420001)
  - LONGITUDINAL CONSTRUCTION JOINT GROUTED IN PLACE TIE BAR (IDOT 420001)
  - LONGITUDINAL CONSTRUCTION JOINT WITH DOWEL BARS
  - 50mm EXPANSION JOINT WITH SLEEPER SLAB AND BACKER ROD
  - SAWED CONTRACTION JOINT (IDOT 420001) SPACED @ 15' APART UNLESS NOTED
  - LONGITUDINAL EXPANSION JOINT (IDOT 420001)



FILE NAME =	USER NAME = IDOT	DESIGNED - EJM	REVISED -	<b>STATE OF ILLINOIS DEPARTMENT OF TRANSPORTATION</b>	<b>JOINTING AND LAYOUT PLAN IL RTE 21 (MILWAUKEE AVE)</b>			F.A.P. RTE.	SECTION	COUNTY	TOTAL SHEETS	SHEET NO.		
11\10290\10add sheets\sh-t-joint002.dgn		DRAWN - BK	REVISED -		SCALE: 1" = 20'	SHEET NO.	OF	SHEETS	STA. 185+50.00 TO STA. 197+50.00	330	128R-3	LAKE	518	156
		PLOT SCALE = 20.0000' / IN.	CHECKED - GFL		REVISED -									
		PLOT DATE = 8/11/2011	DATE - 4/30/2011		REVISED -									
												CONTRACT NO. 60953		
												ILLINOIS FED. AID PROJECT		