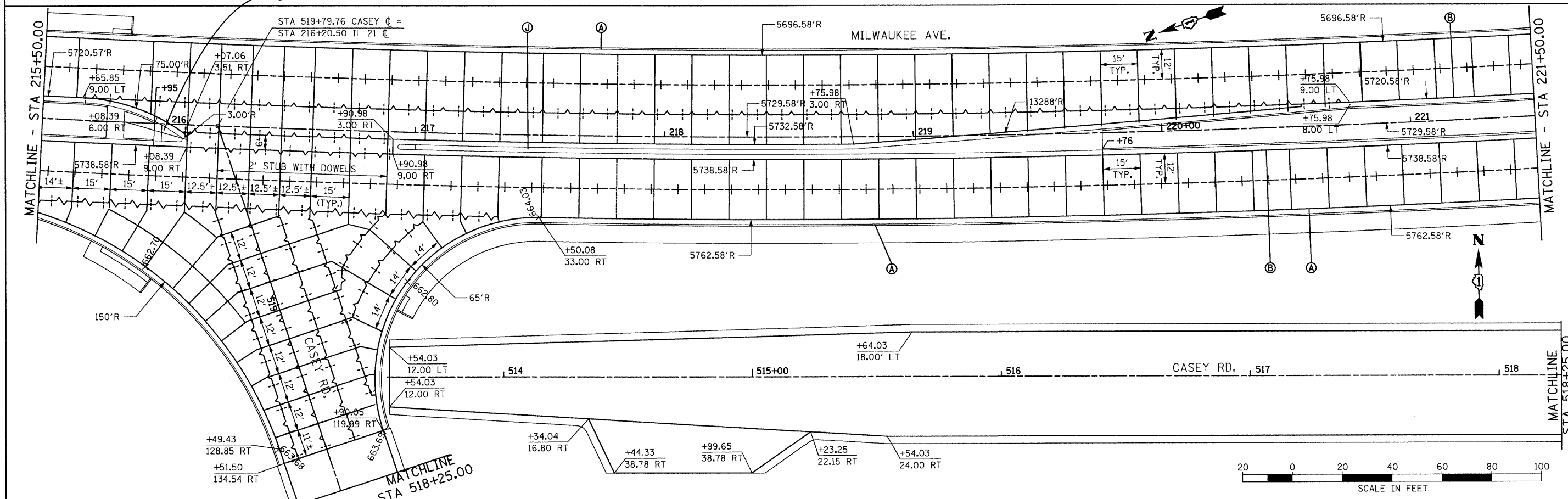
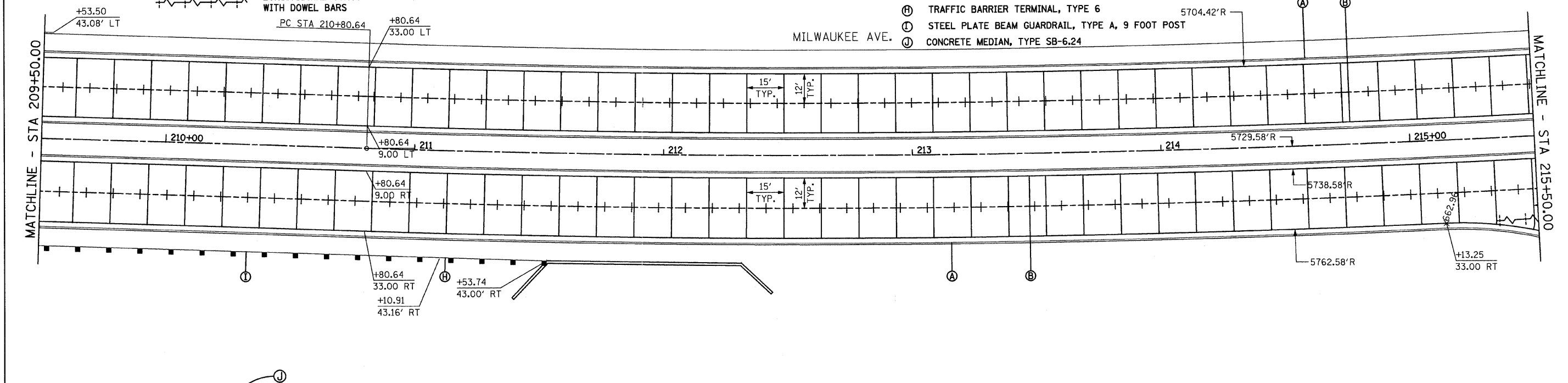


- LEGEND**
- ROADWAY
 - SAWED LONGITUDINAL JOINT (IDOT 420001)
 - LONGITUDINAL CONSTRUCTION JOINT GROUTED IN PLACE TIE BAR (IDOT 420001)
 - LONGITUDINAL CONSTRUCTION JOINT WITH DOWEL BARS

- 50mm EXPANSION JOINT WITH SLEEPER SLAB AND BACKER ROD
- SAWED CONTRACTION JOINT (IDOT 420001) SPACED @ 15' APART UNLESS NOTED
- LONGITUDINAL EXPANSION JOINT (IDOT 420001)

- LEGEND**
- (A) COMBINATION CONCRETE CURB & GUTTER, TYPE B-6.24
 - (B) COMBINATION CONCRETE CURB & GUTTER, TYPE B-6.24 (SPECIAL)
 - (C) COMBINATION CONCRETE CURB & GUTTER, TYPE B-6.12
 - (D) CONCRETE MEDIAN SURFACE, 4"
 - (E) CONCRETE MEDIAN, TYPE M-2.12
 - (F) TRAFFIC BARRIER TERMINAL, TYPE 1 (SPECIAL) TANGENT
 - (G) TRAFFIC BARRIER TERMINAL, TYPE 2
 - (H) TRAFFIC BARRIER TERMINAL, TYPE 6
 - (I) STEEL PLATE BEAM GUARDRAIL, TYPE A, 9 FOOT POST
 - (J) CONCRETE MEDIAN, TYPE SB-6.24



FILE NAME = I:\102981\cadd sheets\sh1-joint004.dgn	USER NAME = IDOT	DESIGNED - EJM	REVISED -	STATE OF ILLINOIS DEPARTMENT OF TRANSPORTATION	JOINTING AND LAYOUT PLAN IL RTE 21 (MILWAUKEE AVE)				F.A.P. RTE. 330	SECTION 128R-3	COUNTY LAKE	TOTAL SHEETS 518	SHEET NO. 158
PLOT SCALE = 20.0000' / IN.	PLOT DATE = 8/11/2011	DRAWN - BK	REVISED -		SCALE: 1" = 20'	SHEET NO.	OF	SHEETS	STA. 203+50.00 TO STA. 221+50.00	CONTRACT NO. 60953			
CHECKED - GFL	DATE - 4/30/2011	REVISOR -	REVISIONS -		ILLINOIS FED. AID PROJECT								