

**EAST EDGE OF NB SHOULDER**

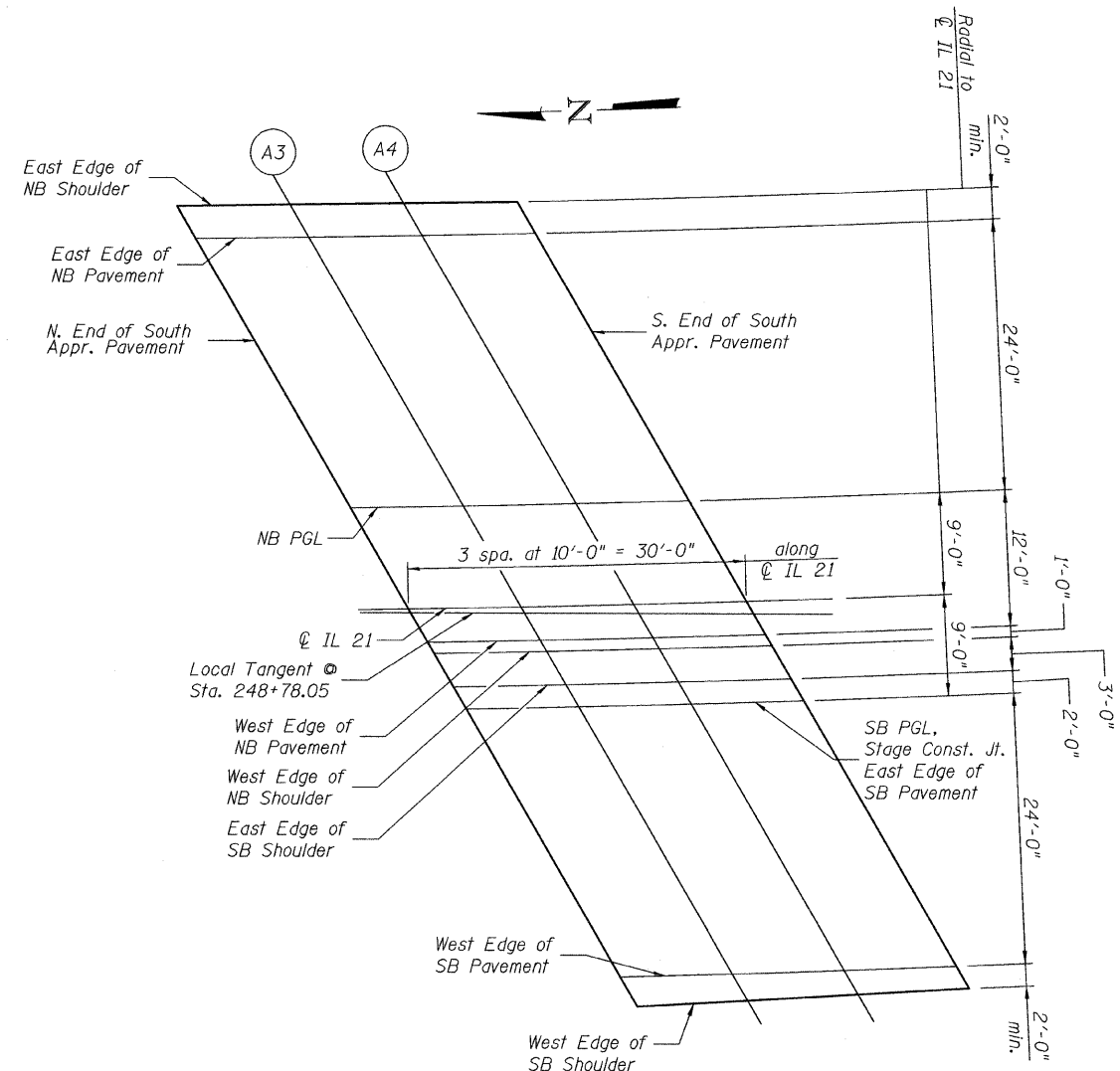
Location	Station	Offset	Theoretical Grade Elevations
N. End South Appr. Pav't.	248+94.51	-35.87	672.01
A3	249+04.73	-35.90	672.06
A4	249+14.98	-35.88	672.11
S. End South Appr. Pav't.	249+25.26	-35.80	672.17

**EAST EDGE OF NB PAVEMENT**

Location	Station	Offset	Theoretical Grade Elevations
N. End South Appr. Pav't.	248+96.17	-33.00	672.10
A3	249+06.38	-33.00	672.16
A4	249+16.60	-33.00	672.21
S. End South Appr. Pav't.	249+26.82	-33.00	672.26

**EAST EDGE OF SB SHOULDER**

Location	Station	Offset	Theoretical Grade Elevations
N. End South Appr. Pav't.	249+18.64	7.00	673.38
A3	249+28.59	7.00	673.43
A4	249+38.55	7.00	673.48
S. End South Appr. Pav't.	249+48.50	7.00	673.53



**SOUTH APPROACH SLAB PLAN**

**NB PGL**

Location	Station	Offset	Theoretical Grade Elevations
N. End South Appr. Pav't.	249+09.77	-9.00	672.87
A3	249+19.83	-9.00	672.92
A4	249+29.89	-9.00	672.97
S. End South Appr. Pav't.	249+39.95	-9.00	673.02

**SB PGL, STAGE CONST. JT. EAST EDGE OF SB PAVEMENT**

Location	Station	Offset	Theoretical Grade Elevations
N. End South Appr. Pav't.	249+19.74	9.00	673.44
A3	249+29.67	9.00	673.49
A4	249+39.62	9.00	673.54
S. End South Appr. Pav't.	249+49.56	9.00	673.59

**WEST EDGE OF NB PAVEMENT**

Location	Station	Offset	Theoretical Grade Elevations
N. End South Appr. Pav't.	249+16.43	3.00	673.25
A3	249+26.42	3.00	673.30
A4	249+36.40	3.00	673.35
S. End South Appr. Pav't.	249+46.38	3.00	673.40

**WEST EDGE OF SB PAVEMENT**

Location	Station	Offset	Theoretical Grade Elevations
N. End South Appr. Pav't.	249+32.70	33.00	674.20
A3	249+42.49	33.00	674.25
A4	249+52.29	33.00	674.30
S. End South Appr. Pav't.	249+62.08	33.00	674.35

**WEST EDGE OF NB SHOULDER**

Location	Station	Offset	Theoretical Grade Elevations
N. End South Appr. Pav't.	249+16.99	4.00	673.28
A3	249+26.96	4.00	673.33
A4	249+36.93	4.00	673.38
S. End South Appr. Pav't.	249+46.91	4.00	673.43

**WEST EDGE OF SB SHOULDER**

Location	Station	Offset	Theoretical Grade Elevations
N. End South Appr. Pav't.	249+34.13	35.69	674.29
A3	249+43.76	35.41	674.33
A4	249+53.42	35.18	674.37
S. End South Appr. Pav't.	249+63.11	34.99	674.41

FILE NAME = 8498199-60953-011-S.Appr.EL.dgn	USER NAME =	DESIGNED - KO	REVISIONS -
		CHECKED - WPM	REVISIONS -
		DRAWN - KO	REVISIONS -
		CHECKED - WPM	REVISIONS -
PLOT SCALE =			
PLOT DATE = 12/28/2018			

**STATE OF ILLINOIS  
DEPARTMENT OF TRANSPORTATION**

**TOP OF SOUTH APPROACH SLAB ELEVATIONS  
STRUCTURE NO. 049-0199**

SHEET NO. 11 OF 43 SHEETS

F.A.P. RTE. 330	SECTION 128R-3	COUNTY LAKE	TOTAL SHEETS 518	SHEET NO. 253
			CONTRACT NO. 60953	
ILLINOIS FED. AID PROJECT				

