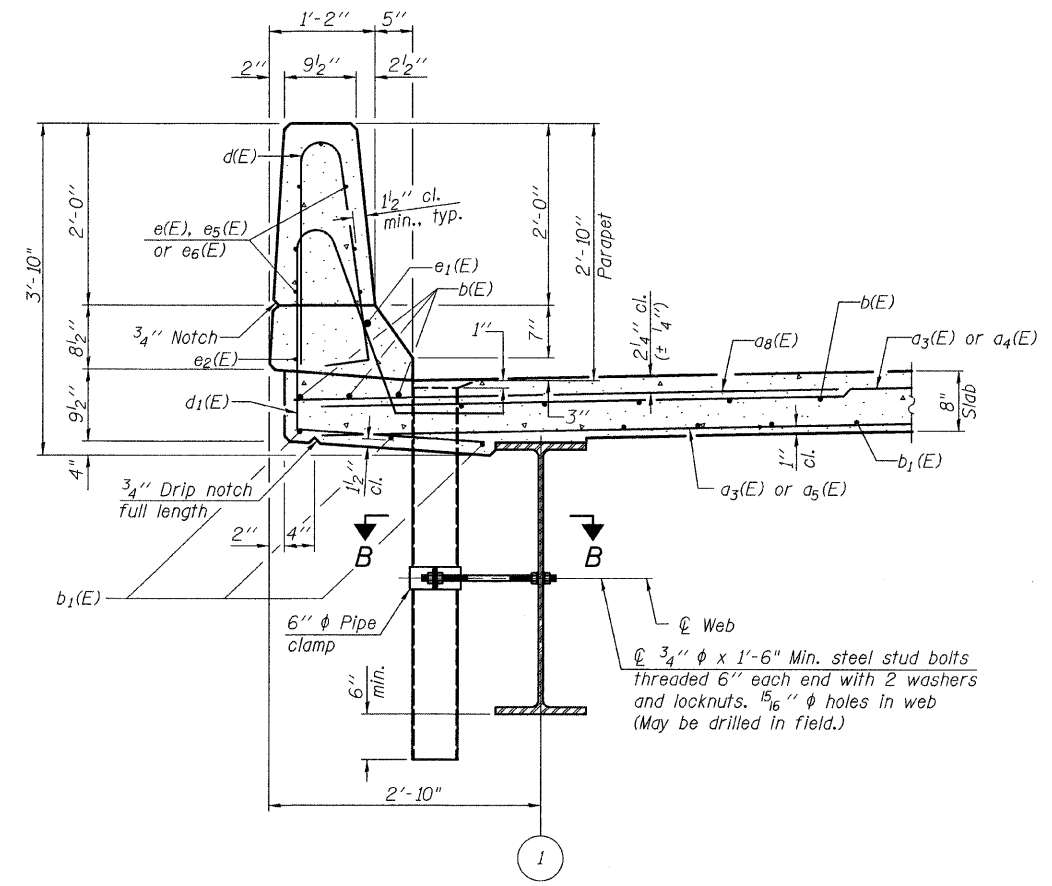
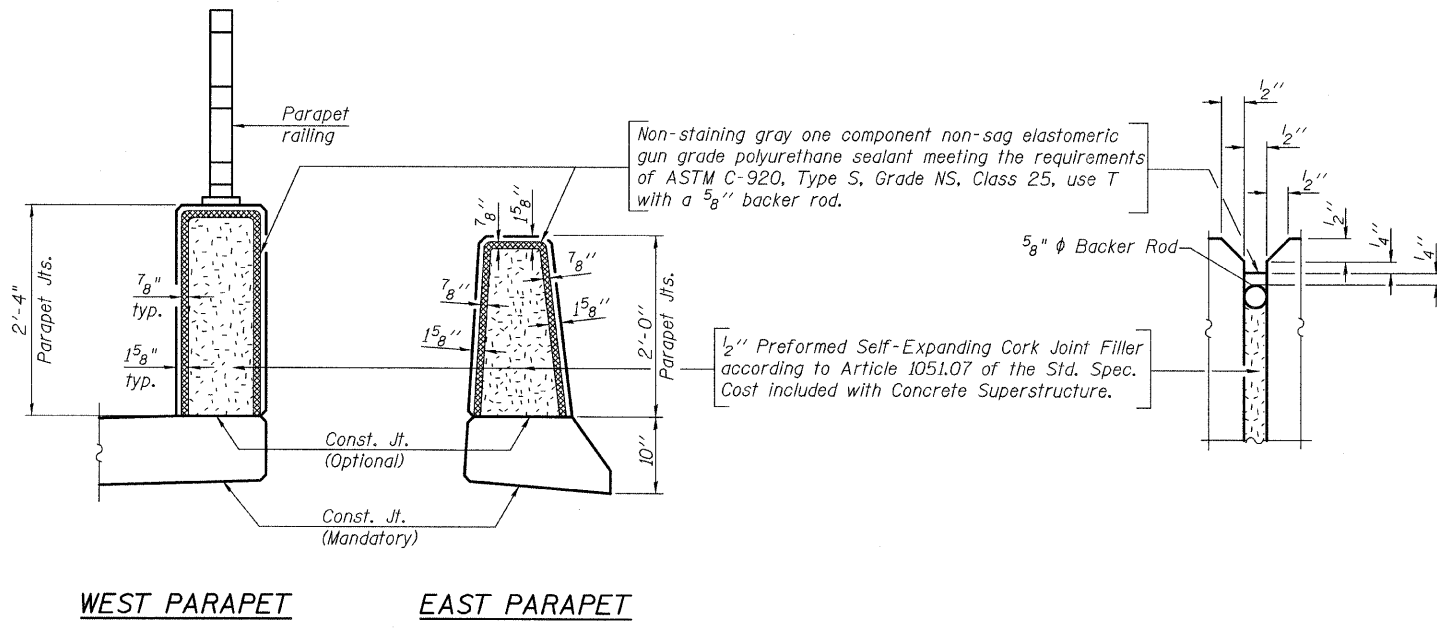


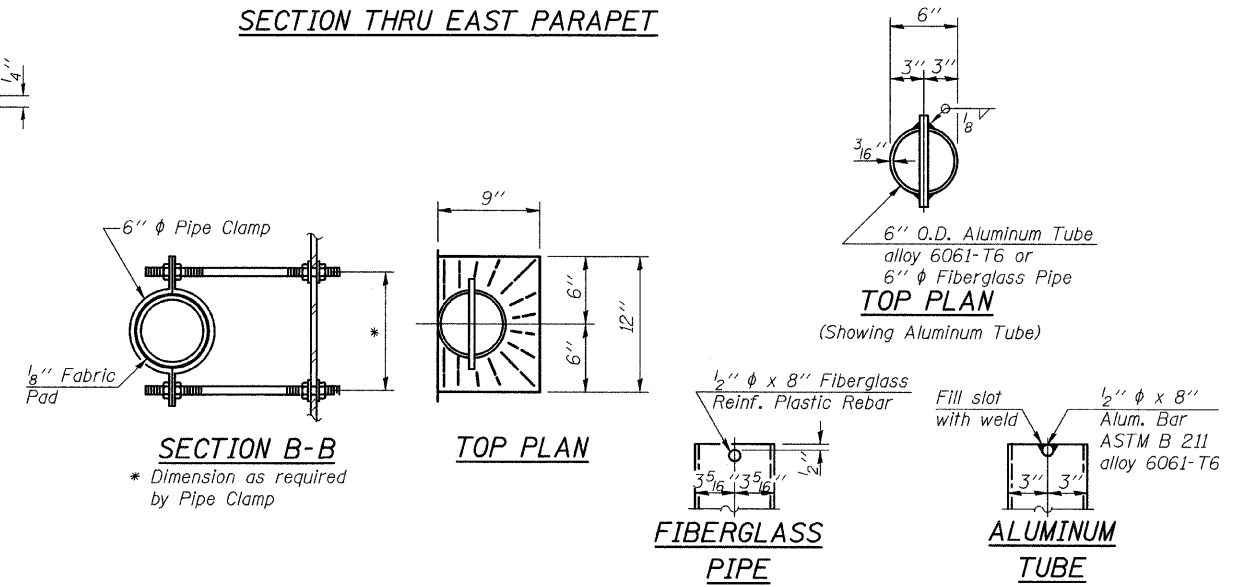
**INSIDE ELEVATION OF EAST PARAPET**  
 (Min. lap #4 bar = 2'-0")  
 (Min. lap #8 bar = 5'-2")



**SECTION THRU EAST PARAPET**



**PARAPET JOINT DETAILS**



**Notes:**  
 Drains shall be located clear of all diaphragms.  
 The exterior surfaces of the floor drains shall be painted with the finish coat as specified in the special provisions for Cleaning and Painting New Metal Structures. The exterior surfaces of the drains shall be cleaned according to the Society of Protective Coatings Spec. SSPC-SPI prior to painting.  
 Fiberglass pipe shall conform to ASTM D 2996, with short-time rupture strength hoop tensile stress of 30,000 p.s.i. minimum.  
 Galvanize clamping device according to AASHTO M232. Cost of clamping device and inserts is included with Floor Drains.

FILE NAME = 0490199-62953-016-E_Parapet.dgn	USER NAME =	DESIGNED - KO	REVISIONS -	<b>STATE OF ILLINOIS DEPARTMENT OF TRANSPORTATION</b>	<b>EAST PARAPET ELEVATION AND DETAILS STRUCTURE NO. 049-0199</b>	F.A.P. RTE.	SECTION	COUNTY	TOTAL SHEETS	SHEET NO.
PLOT SCALE =	CHECKED - JY	REVISIONS -	330			128R-3	LAKE	518	258	
PLOT DATE = 12/28/2010	DRAWN - KO	REVISIONS -	SHEET NO. 16 OF 43 SHEETS			CONTRACT NO. 60953				
	CHECKED - JY	REVISIONS -	ILLINOIS FED. AID PROJECT							

