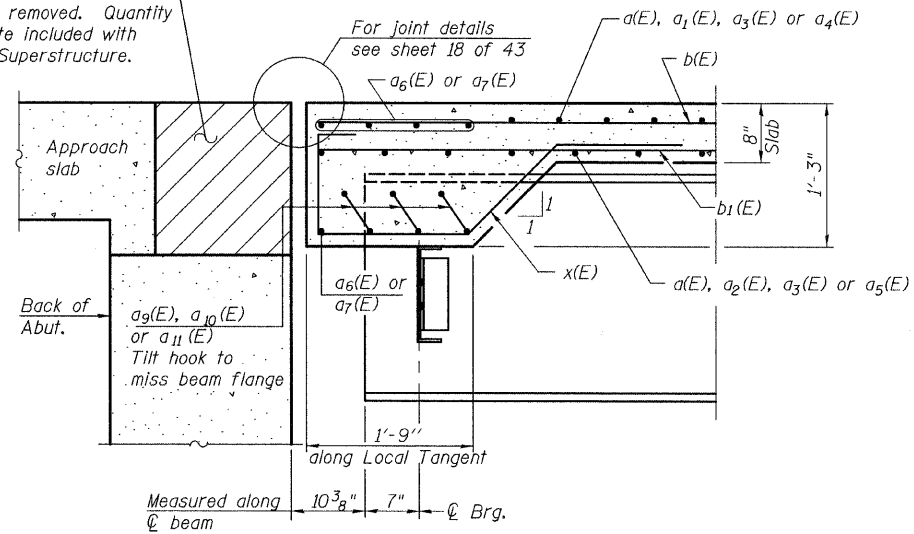
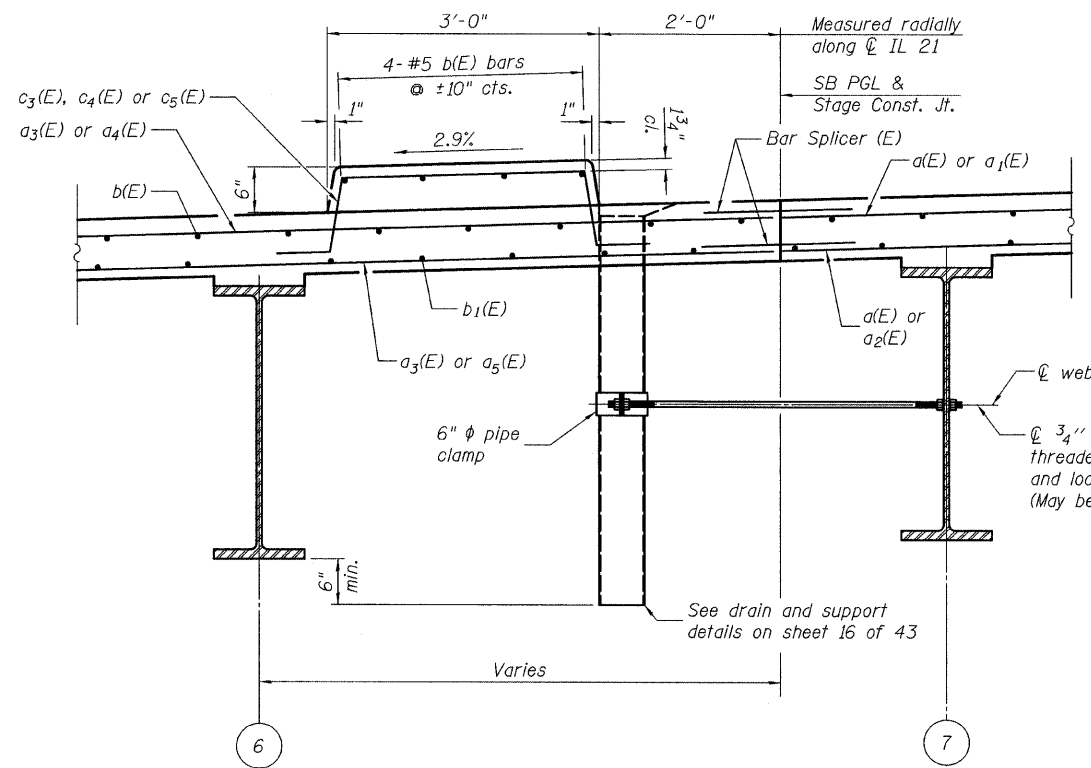


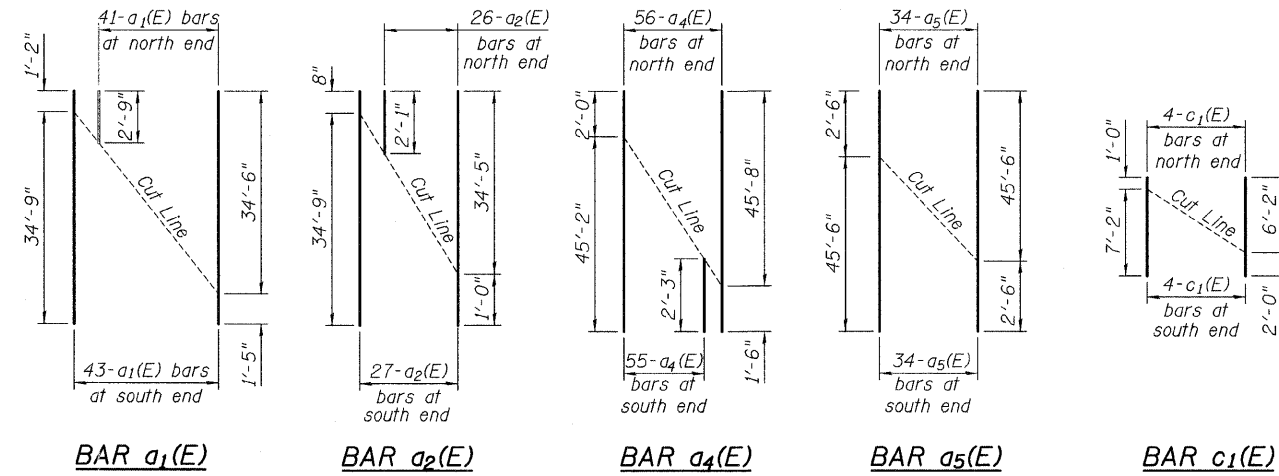
Hatched area to be poured after superstructure forms have been removed. Quantity of concrete included with Concrete Superstructure.



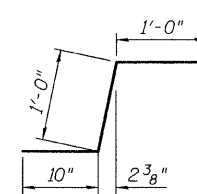
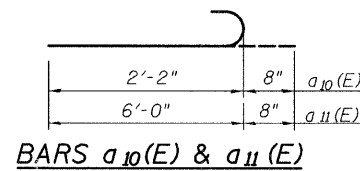
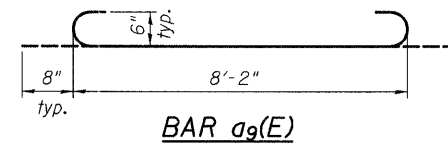
SECTION A-A



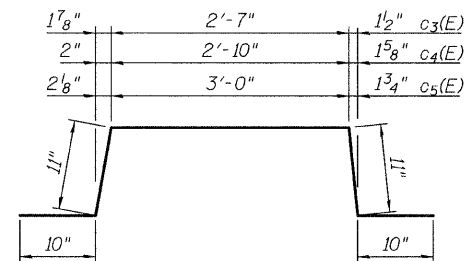
SECTION THRU MEDIAN



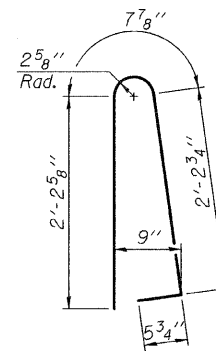
REBAR CUTTING DIAGRAM



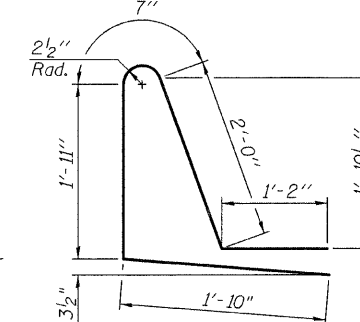
BAR c2(E)



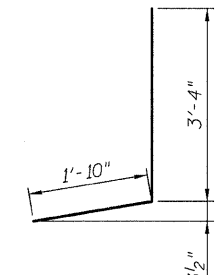
BARS c3(E), c4(E) & c5(E)



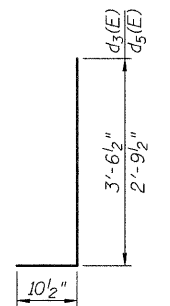
BAR d(E)



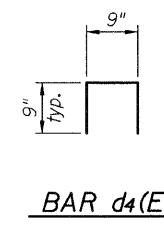
BAR d1(E)



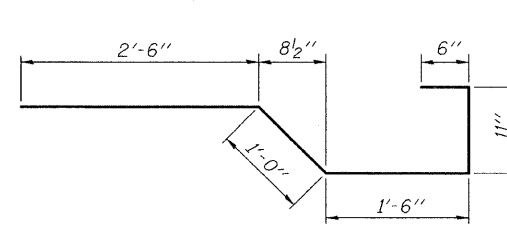
BAR d2(E)



BARS d3(E) & d5(E)



BAR d4(E)



BAR x(E)

**SUPERSTRUCTURE
BILL OF MATERIAL**

Bar	No.	Size	Length	Shape
a(E)	344	#5	19'-2"	—
a1(E)	43	#5	35'-11"	—
a2(E)	27	#5	35'-5"	—
a3(E)	151	#5	45'-10"	—
a4(E)	56	#5	47'-2"	—
a5(E)	34	#5	48'-0"	—
a6(E)	20	#6	22'-6"	—
a7(E)	20	#6	28'-9"	—
a8(E)	153	#6	6'-6"	—
a9(E)	54	#6	9'-6"	—
a10(E)	6	#6	2'-10"	—
a11(E)	6	#6	6'-8"	—
b(E)	198	#5	36'-6"	—
b1(E)	228	#5	25'-6"	—
c(E)	66	#5	8'-8"	—
c1(E)	4	#5	8'-2"	—
c2(E)	71	#5	2'-10"	—
c3(E)	68	#5	6'-1"	—
c4(E)	2	#5	6'-4"	—
c5(E)	2	#5	6'-6"	—
d(E)	77	#5	5'-7"	—
d1(E)	77	#5	7'-6"	—
d2(E)	71	#5	5'-2"	—
d3(E)	71	#6	4'-5"	—
d4(E)	16	#4	2'-3"	—
d5(E)	71	#5	3'-8"	—
e(E)	28	#4	17'-2"	—
e1(E)	2	#8	37'-6"	—
e2(E)	3	#4	24'-3"	—
e3(E)	6	#4	16'-8"	—
e4(E)	6	#4	17'-5"	—
e5(E)	6	#4	16'-10"	—
e6(E)	6	#4	17'-7"	—
x(E)	162	#5	6'-5"	—
Floor Drains	Each		8	
Concrete Superstructure		Cu. Yd.	177.5	
Bridge Deck Grooving		Sq. Yd.	529	
Protective Coat		Sq. Yd.	685	
Reinforcement Bars, Epoxy Coated		Pound	44,080	
Bar Splicer	Each		255	
Parapet Railing	Foot		70	

Bars indicated thus 1 x 2 - #8 etc. indicates 1 line of bars with 2 lengths per line.

FILE NAME = 0490199-60953-017-DeckBOM.dgn

USER NAME =

DESIGNED - KO

REVISED -

PLOT SCALE =

CHECKED - JY

REVISED -

PLOT DATE = 12/20/2018

DRAWN - KO

REVISED -

CHECKED - JY

REVISED -

STATE OF ILLINOIS
DEPARTMENT OF TRANSPORTATION

DECK DETAILS AND BILL OF MATERIAL
STRUCTURE NO. 049-0199

SHEET NO. 17 OF 43 SHEETS

F.A.P. RTE.	SECTION	COUNTY	TOTAL SHEETS	SHEET NO.
330	128R-3	LAKE	518	259
			CONTRACT NO. 60953	
ILLINOIS FED. AID PROJECT				

MACTEC