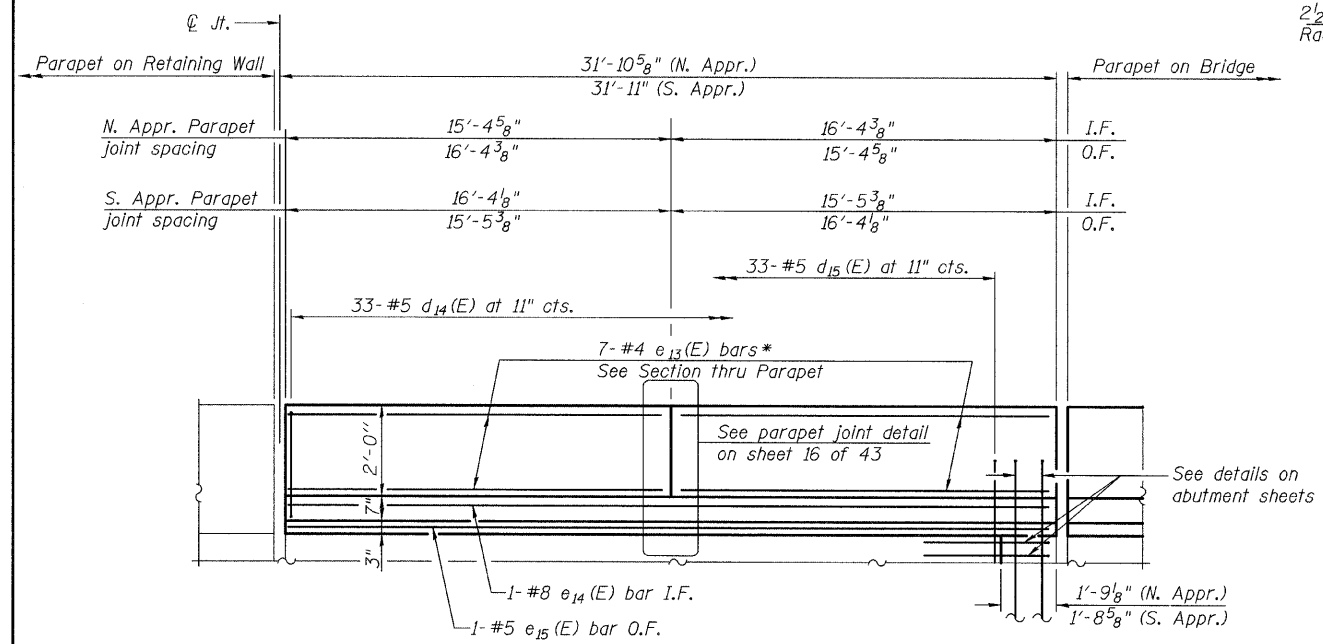
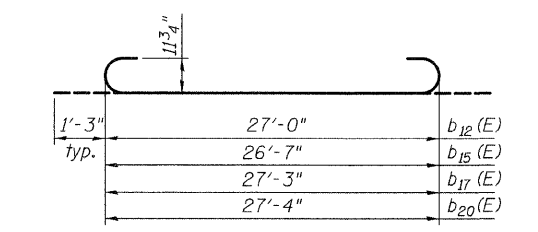


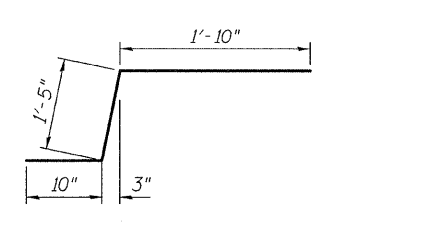
INSIDE ELEVATION OF WEST PARAPET
(North Abutment As Shown, South Abutment Opposite Hand)



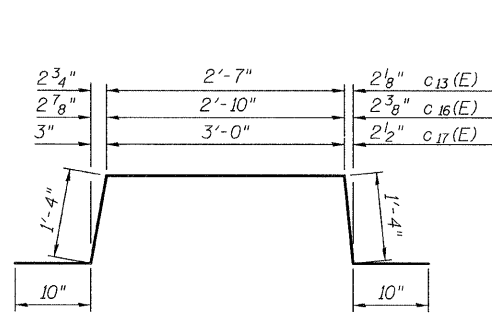
INSIDE ELEVATION OF EAST PARAPET
(North Abutment As Shown, South Abutment Opposite Hand)



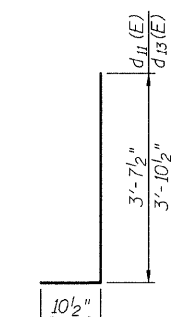
BARS b₁₂(E), b₁₅(E), & b₁₇(E) & b₂₀(E)



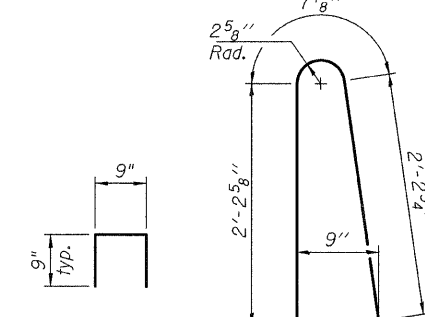
BAR c₁₂(E)



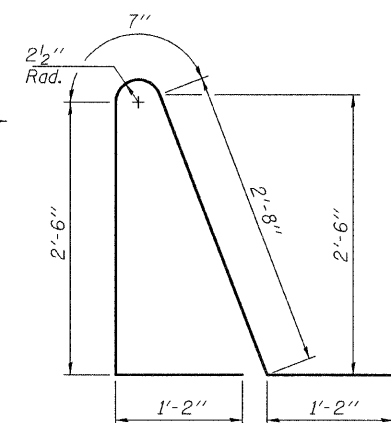
BARS c₁₃(E), c₁₆(E) & c₁₇(E)



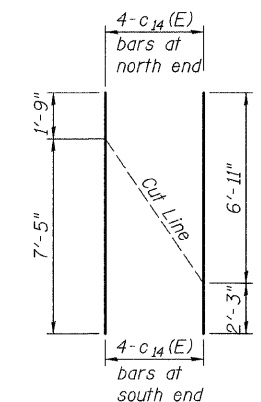
BARS d₁₁(E) & d₁₃(E)



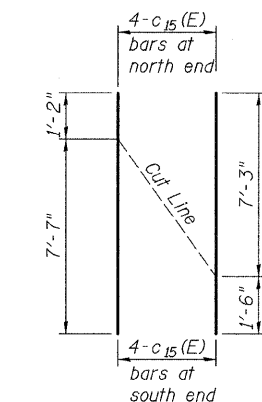
BAR d₁₂(E) BAR d₁₄(E)



BAR d₁₅(E)



BAR c₁₄(E)



BAR c₁₅(E)

REBAR CUTTING DIAGRAM

**TWO APPROACHES
BILL OF MATERIAL**

Bar	No.	Size	Length	Shape
a ₁₁ (E)	48	#4	21'-5"	
a ₁₂ (E)	90	#5	21'-7"	
a ₁₃ (E)	48	#4	28'-0"	
a ₁₄ (E)	90	#5	28'-2"	
a ₁₅ (E)	48	#6	6'-6"	
a ₁₆ (E)	48	#4	21'-5"	
a ₁₇ (E)	90	#5	21'-7"	
a ₁₈ (E)	48	#4	27'-8"	
a ₁₉ (E)	90	#5	27'-10"	
b ₁₁ (E)	29	#4	29'-3"	
b ₁₂ (E)	84	#9	29'-6"	
b ₁₃ (E)	11	#5	29'-4"	
b ₁₄ (E)	8	#5	29'-6"	
b ₁₅ (E)	85	#9	29'-1"	
b ₁₆ (E)	11	#5	28'-11"	
b ₁₇ (E)	110	#9	29'-9"	
b ₁₈ (E)	29	#4	28'-11"	
b ₁₉ (E)	37	#4	29'-8"	
b ₂₀ (E)	111	#9	29'-10"	
b ₂₁ (E)	37	#4	29'-9"	
c ₁₁ (E)	50	#5	8'-7"	
c ₁₂ (E)	60	#5	4'-1"	
c ₁₃ (E)	58	#5	6'-11"	
c ₁₄ (E)	4	#5	9'-2"	
c ₁₅ (E)	4	#5	8'-9"	
c ₁₆ (E)	2	#5	7'-2"	
c ₁₇ (E)	2	#5	7'-4"	
d ₁₁ (E)	60	#6	4'-6"	
d ₁₂ (E)	16	#4	2'-3"	
d ₁₃ (E)	60	#5	4'-9"	
d ₁₄ (E)	66	#5	5'-7"	
d ₁₅ (E)	66	#5	8'-1"	
e ₁₁ (E)	12	#4	15'-8"	
e ₁₂ (E)	12	#4	15'-5"	
e ₁₃ (E)	28	#4	16'-0"	
e ₁₄ (E)	2	#8	31'-5"	
e ₁₅ (E)	2	#5	31'-5"	
f ₁₁ (E)	35	#4	11'-3"	
f ₁₂ (E)	35	#4	10'-10"	
f ₁₃ (E)	45	#4	11'-5"	
f ₁₄ (E)	45	#4	11'-0"	
w ₁₁ (E)	80	#5	21'-7"	
w ₁₂ (E)	80	#5	27'-7"	
w ₁₃ (E)	80	#5	20'-11"	
w ₁₄ (E)	80	#5	27'-0"	
Concrete Superstructure		Cu. Yd.	275.4	
Concrete Structures		Cu. Yd.	56.0	
Protective Coat		Sq. Yd.	587	
Reinforcement Bars, Epoxy Coated		Pound	68,630	
Bar Splicer		Each	218	
Parapet Railing		Foot	60	

Notes:

1. Reinforcing shall be paid for as reinforcing bars, epoxy coated.
2. Approach slab and parapet concrete shall be paid for as Concrete Superstructure.
3. Approach footing concrete shall be paid for as Concrete Structures.
4. Order bars e₁₁(E), e₁₂(E) and e₁₃(E) full length, field cut to fit in parapets.
5. The approach footing maximum applied service bearing pressure (Q_{max}) = 2.0 ksf.
6. For bar splicer details, see sheet 39 of 43.
7. Cost of excavation for approach footing included with Concrete Structures.
8. For Porous Granular Embankment (Special) and drainage treatment details, see sheet 2 of 43.
9. For additional parapet and railing details, see sheets 15 and 16 of 43.

