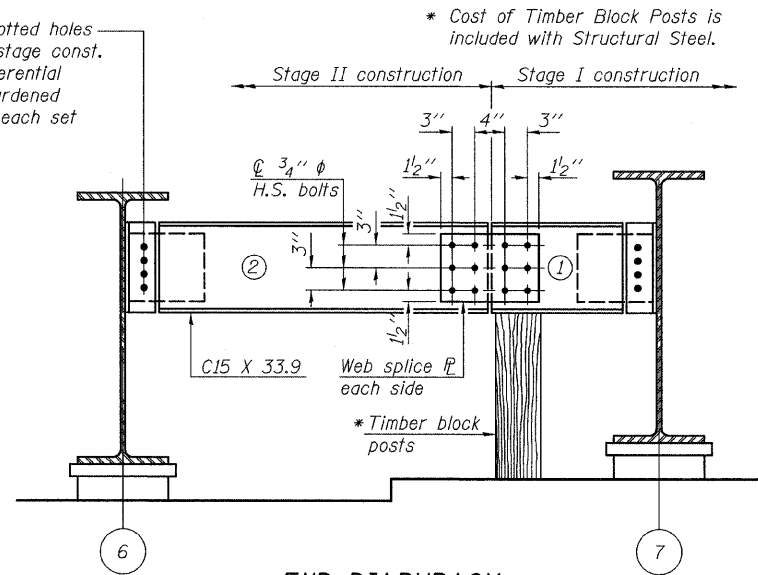


Provide $\frac{15}{16}$ " x $1\frac{7}{8}$ " slotted holes on one side only for stage const. diaphragm due to differential displacements. Two hardened washers required for each set of oversized holes.

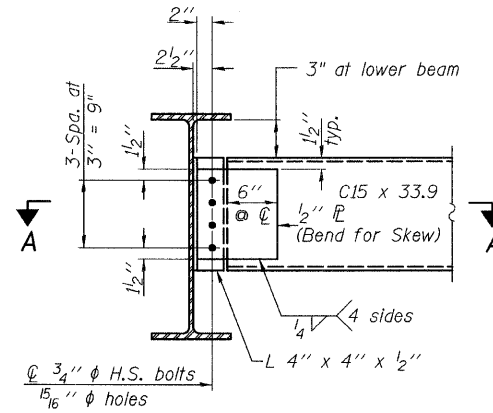
* Cost of Timber Block Posts is included with Structural Steel.



END DIAPHRAGM

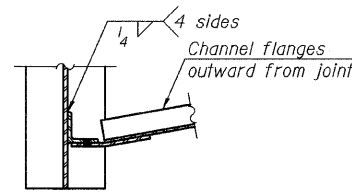
END DIAPHRAGM STAGE CONSTRUCTION SEQUENCE

- 1.) Order diaphragm in two sections.
- 2.) Attach section ① of diaphragm to Beam 7.
- 3.) Place timber block posts between section ① of diaphragm and abutment bearing section.
- 4.) Attach section ② of diaphragm to both Beam 6 and section ① of diaphragm during stage II construction with splice plates.
- 5.) Remove timber block posts.

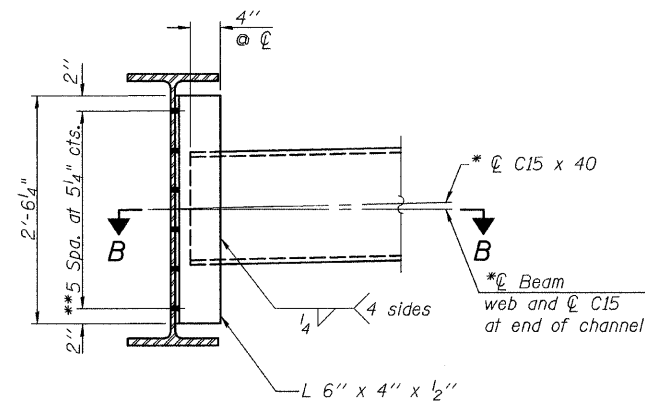


END DIAPHRAGM

Note:
Two hardened washers required for each set of oversized holes.

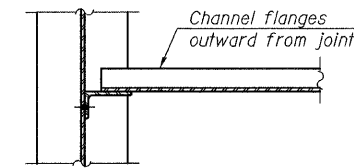


SECTION A-A

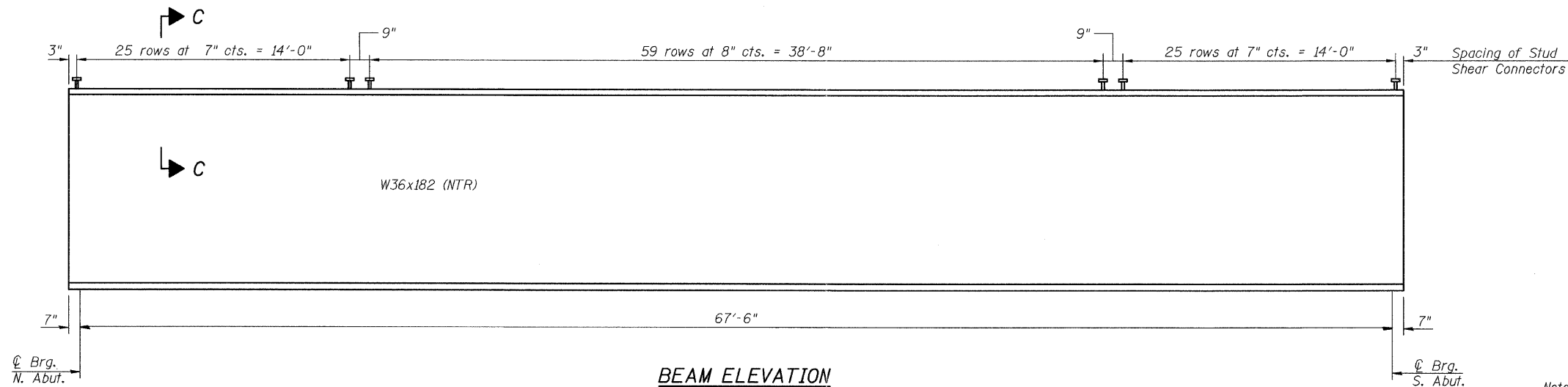


INTERIOR DIAPHRAGM

Note: (For Interior Diaphragm)
Two hardened washers required for each set of oversized holes.
*Alternate channels are permitted to facilitate material acquisition. Calculated weight of structural steel is based on the lighter section. The alternate, if utilized, shall be provided at no additional cost to the Department.
** $\frac{3}{4}$ " ϕ HS bolts, $\frac{15}{16}$ " ϕ holes

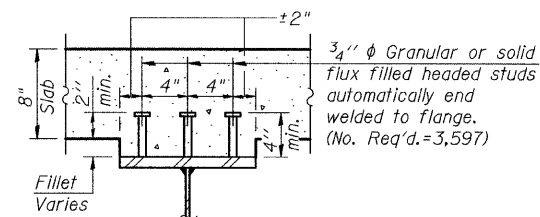


SECTION B-B



BEAM ELEVATION

"NTR" denotes plates to which notch toughness requirements are applicable.



SECTION C-C

NOTE:
Structural steel was furnished in Contract 60P54 and is shown for information only. Stud Shear Connectors and erection are included in Contract 60953.

Notes:
All diaphragms, connecting plates, and angles shall be AASHTO M270 Grade 50W.
All cross frames or diaphragms shall be installed as steel is erected and secured with erection pins and bolts except as otherwise noted. Individual cross frames or diaphragms at supports may be temporarily disconnected to install bearing anchor rods.
Load carrying components designated "NTR" shall conform to the Supplemental Requirements for Notch Toughness, Zone 2.

FILE NAME = 0490199-60953-027-Steel.dgn	USER NAME =	DESIGNED - JY	REVISED -	STATE OF ILLINOIS DEPARTMENT OF TRANSPORTATION	BEAM ELEVATION, DIAPHRAGM AND STEEL DETAILS STRUCTURE NO. 049-0199	F.A.P. RTE.	SECTION	COUNTY	TOTAL SHEETS	SHEET NO.	
		CHECKED - WPM	REVISED -			330	128R-3	LAKE	518	269	
		DRAWN - JY	REVISED -			CONTRACT NO. 60953					
		CHECKED - WPM	REVISED -			SHEET NO. 27 OF 43 SHEETS					
						ILLINOIS FED. AID PROJECT					

