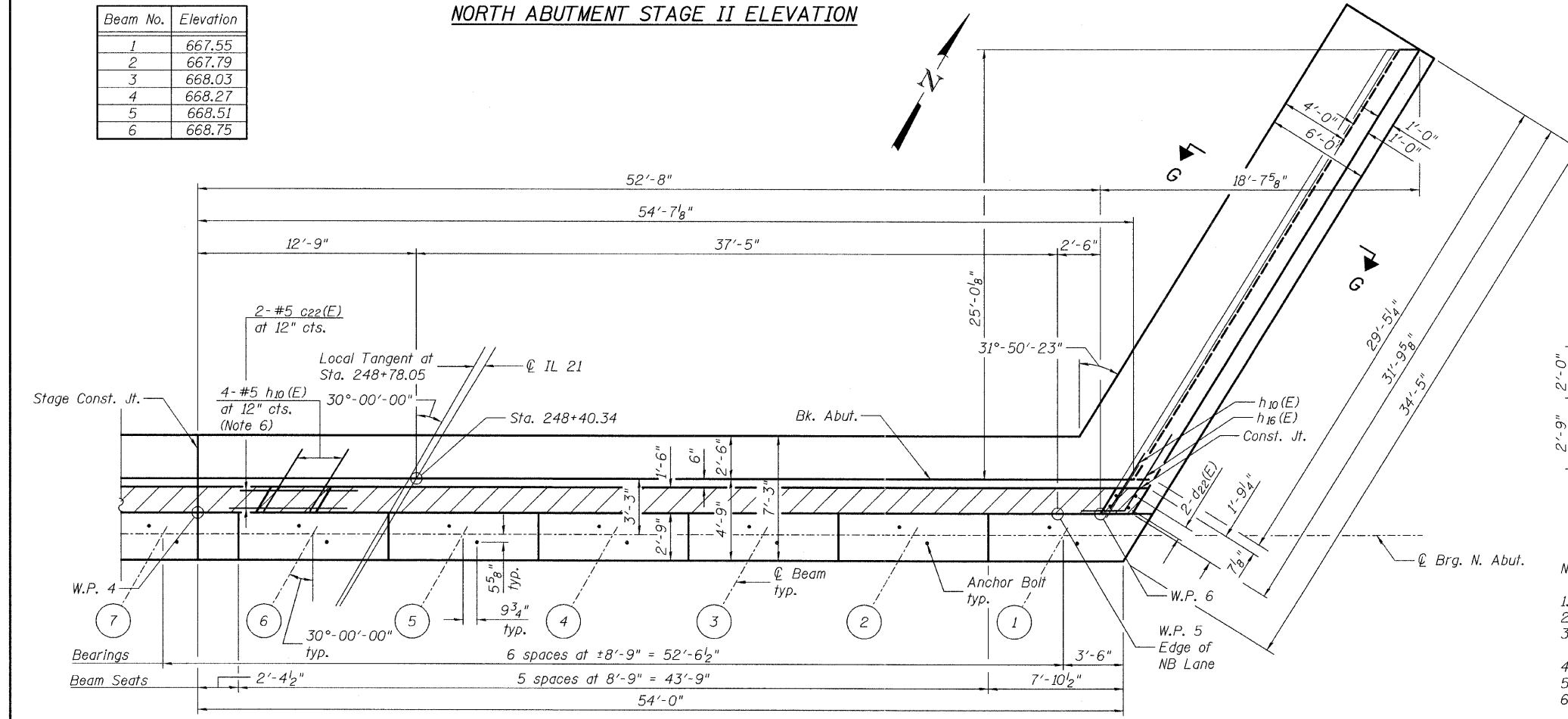
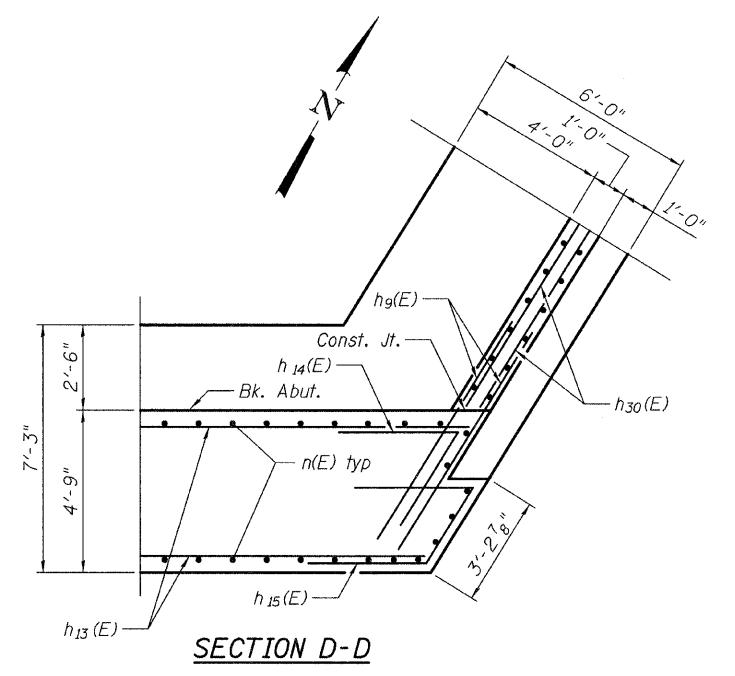


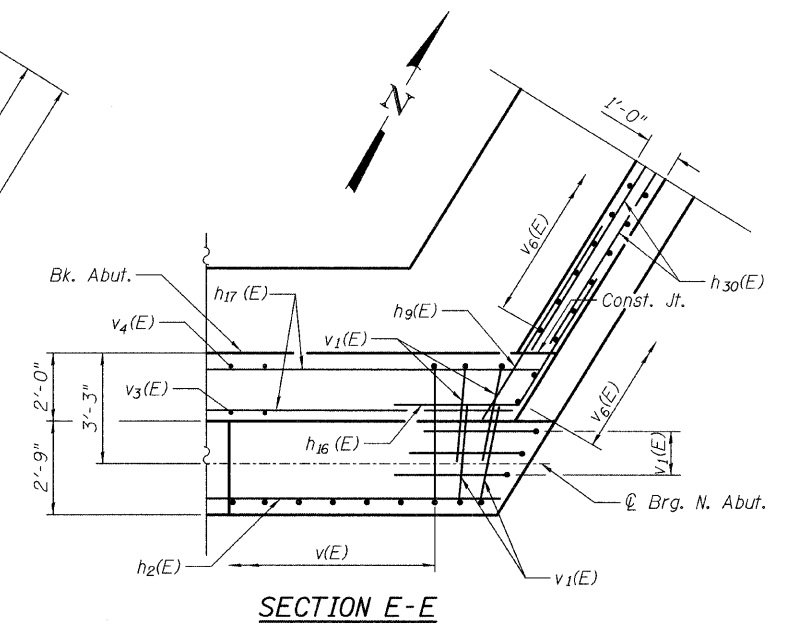
BEAM SEAT ELEVATION

Beam No.	Elevation
1	667.55
2	667.79
3	668.03
4	668.27
5	668.51
6	668.75

NORTH ABUTMENT STAGE II ELEVATION



NORTH ABUTMENT STAGE II PLAN VIEW



Notes:

1. See Section A-A on sheet 31 of 43.
2. See Section G-G on sheet 33 of 43.
3. Hatched area to be poured after superstructure false work has been removed. Quantity of concrete included with Concrete Superstructure.
4. Space reinforcement in cap to miss anchor bolts.
5. Pour steps monolithically with cap.
6. Place bar splicer (E), v4(E) and h10(E) bars parallel to beams. Alternate bar splicer with v4(E) bars.
7. Min. lap splice for #5 bar is 2'-11" and #6 bar is 3'-6" unless noted otherwise.

FILE NAME = 0490199-60953-032-N.Abut.Stage.II.dgn	USER NAME =	DESIGNED - JY	REVISED -
		CHECKED - WPM	REVISED -
		DRAWN - JY	REVISED -
		CHECKED - RMK	REVISED -

**STATE OF ILLINOIS
DEPARTMENT OF TRANSPORTATION**

**STAGE II NORTH ABUTMENT PLAN, ELEVATION AND SECTIONS
STRUCTURE NO. 049-0199**

F.A.P. RTE. 330	SECTION 128R-3	COUNTY LAKE	TOTAL SHEETS 518	SHEET NO. 274
CONTRACT NO. 60953				ILLINOIS FED. AID PROJECT

