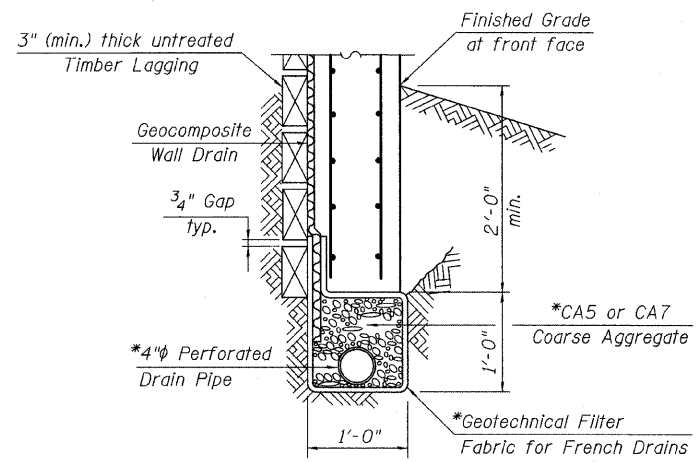
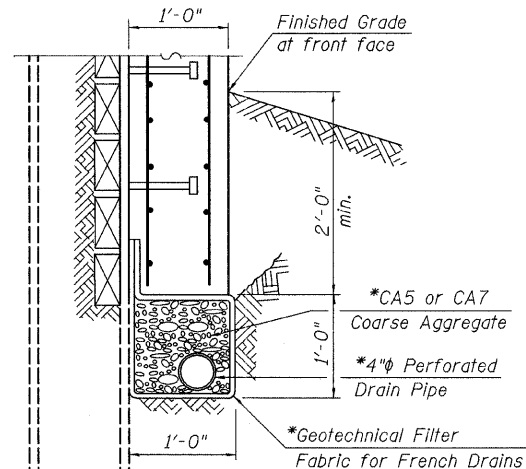


**SOLDIER PILE RETAINING WALL NO. 3 SOLDIER PILE SCHEDULE**



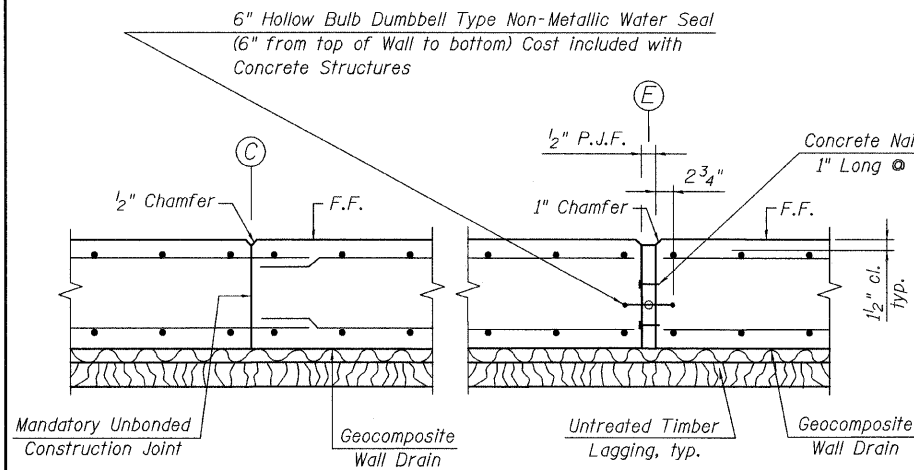
**BETWEEN SOLDIER PILES**



**AT SOLDIER PILES**

**PIPE UNDERDRAIN DETAIL**

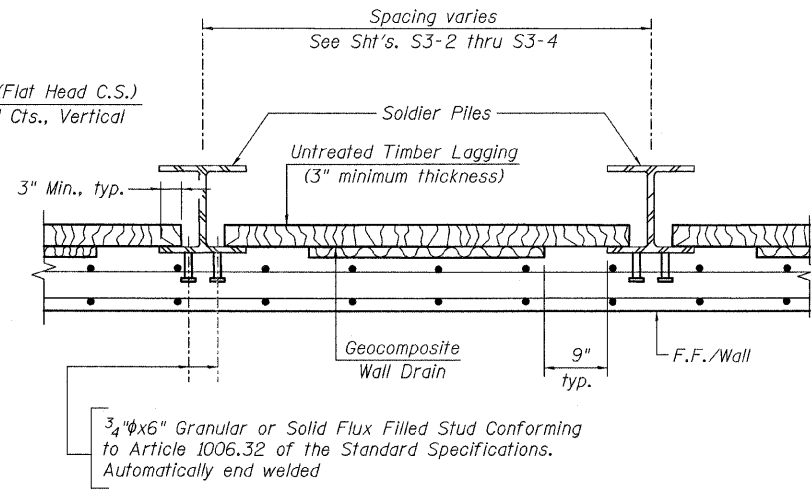
\*Included in the cost of Pipe Underdrains for Structures 4"



**CONSTRUCTION JOINT**

**EXPANSION JOINT**

**END OF PANEL DETAILS**



**TYPICAL SECTION THRU SOLDIER PILE WALL**

PILE NO.	PILE SIZE	TOP/PILE ELEV.	TIP/PILE ELEV.	APPROX. PILE LENGTH (FT.)	NO. STUD PER PILE	STUD SPACING
1	HP 14x 89	666.85	650.25	16.59	2 x 10 = 20	9 SPA. @ 4.75 IN = 3'-6"
2	HP 14x 89	666.97	648.25	18.71	2 x 10 = 20	9 SPA. @ 4.75 IN = 3'-6"
3	HP 14x 89	667.09	646.25	20.83	2 x 11 = 22	10 SPA. @ 4.50 IN = 3'-9"
4	HP 14x 89	667.14	645.00	22.14	2 x 11 = 22	10 SPA. @ 4.75 IN = 3'-11"
5	HP 14x 89	667.18	645.00	22.18	2 x 11 = 22	10 SPA. @ 4.75 IN = 3'-11"
6	HP 14x 89	667.22	645.00	22.22	2 x 11 = 22	10 SPA. @ 4.75 IN = 3'-11"
7	HP 14x 89	667.26	643.50	23.76	2 x 13 = 26	12 SPA. @ 4.75 IN = 4'-9"
8	HP 14x 89	667.30	643.50	23.80	2 x 13 = 26	12 SPA. @ 4.75 IN = 4'-9"
9	HP 14x 89	667.34	643.50	23.84	2 x 13 = 26	12 SPA. @ 4.75 IN = 4'-9"
10	HP 14x 89	667.38	643.50	23.88	2 x 13 = 26	12 SPA. @ 4.75 IN = 4'-9"
11	HP 14x 89	667.42	643.50	23.92	2 x 13 = 26	12 SPA. @ 4.75 IN = 4'-9"
12	HP 14x 89	667.46	643.50	23.96	2 x 13 = 26	12 SPA. @ 4.75 IN = 4'-9"
13	HP 14x 89	667.50	643.50	24.00	2 x 14 = 28	13 SPA. @ 4.50 IN = 4'-10"
14	HP 14x 89	667.54	643.50	24.04	2 x 14 = 28	13 SPA. @ 4.50 IN = 4'-10"
15	HP 14x 89	667.58	642.50	25.08	2 x 14 = 28	13 SPA. @ 4.50 IN = 4'-10"
16	HP 14x 89	667.62	642.50	25.12	2 x 14 = 28	13 SPA. @ 4.75 IN = 5'-1"
17	HP 14x 89	667.66	642.50	25.16	2 x 14 = 28	13 SPA. @ 4.75 IN = 5'-1"
18	HP 14x 89	667.71	642.50	25.21	2 x 14 = 28	13 SPA. @ 4.75 IN = 5'-1"
19	HP 14x 89	667.74	642.00	25.74	2 x 17 = 34	16 SPA. @ 4.50 IN = 6'-0"
20	HP 14x 89	667.77	642.00	25.77	2 x 17 = 34	16 SPA. @ 4.50 IN = 6'-0"
21	HP 14x 89	667.80	642.00	25.80	2 x 17 = 34	16 SPA. @ 4.50 IN = 6'-0"
22	HP 14x 89	667.83	642.00	25.83	2 x 17 = 34	16 SPA. @ 4.75 IN = 6'-4"
23	HP 14x 89	667.86	642.00	25.86	2 x 17 = 34	16 SPA. @ 4.75 IN = 6'-4"
24	HP 14x 89	667.89	642.00	25.89	2 x 17 = 34	16 SPA. @ 4.75 IN = 6'-4"
25	HP 14x 89	667.93	642.00	25.93	2 x 17 = 34	16 SPA. @ 4.75 IN = 6'-4"
26	HP 14x 89	667.96	642.00	25.96	2 x 17 = 34	16 SPA. @ 4.75 IN = 6'-4"
27	HP 14x 89	667.99	642.00	25.99	2 x 17 = 34	16 SPA. @ 4.75 IN = 6'-4"
28	HP 14x 89	668.02	642.00	26.02	2 x 17 = 34	16 SPA. @ 4.75 IN = 6'-4"
29	HP 14x 89	668.05	642.00	26.05	2 x 17 = 34	16 SPA. @ 4.75 IN = 6'-4"
30	HP 14x 89	668.08	642.00	26.08	2 x 17 = 34	16 SPA. @ 4.75 IN = 6'-4"
31	HP 14x 89	668.11	642.00	26.11	2 x 18 = 36	17 SPA. @ 4.50 IN = 6'-4"
32	HP 14x 89	668.15	642.00	26.15	2 x 18 = 36	17 SPA. @ 4.50 IN = 6'-4"
33	HP 14x 89	668.18	642.00	26.18	2 x 18 = 36	17 SPA. @ 4.50 IN = 6'-4"
34	HP 14x 89	668.21	642.00	26.21	2 x 18 = 36	17 SPA. @ 4.75 IN = 6'-8"
35	HP 14x 89	668.24	642.00	26.24	2 x 18 = 36	17 SPA. @ 4.75 IN = 6'-8"
36	HP 14x 89	668.27	642.00	26.27	2 x 18 = 36	17 SPA. @ 4.75 IN = 6'-8"
37	HP 14x 89	668.30	642.00	26.30	2 x 18 = 36	17 SPA. @ 4.75 IN = 6'-8"
38	HP 14x 89	668.33	642.00	26.33	2 x 18 = 36	17 SPA. @ 4.75 IN = 6'-8"
39	HP 14x 89	668.37	642.00	26.37	2 x 18 = 36	17 SPA. @ 4.75 IN = 6'-8"
40	HP 14x 89	668.40	642.00	26.40	2 x 18 = 36	17 SPA. @ 4.75 IN = 6'-8"
41	HP 14x 89	668.43	642.00	26.43	2 x 18 = 36	17 SPA. @ 4.75 IN = 6'-8"
42	HP 14x 89	668.46	642.00	26.46	2 x 18 = 36	17 SPA. @ 4.75 IN = 6'-8"
43	HP 14x 89	668.49	642.00	26.49	2 x 18 = 36	17 SPA. @ 4.75 IN = 6'-8"
44	HP 14x 89	668.52	642.00	26.52	2 x 19 = 38	18 SPA. @ 4.50 IN = 6'-9"
45	HP 14x 89	668.55	642.00	26.55	2 x 19 = 38	18 SPA. @ 4.50 IN = 6'-9"
46	HP 14x 89	668.58	642.00	26.58	2 x 19 = 38	18 SPA. @ 4.50 IN = 6'-9"
47	HP 14x 89	668.62	642.00	26.62	2 x 19 = 38	18 SPA. @ 4.75 IN = 7'-1"
				TOTAL	1,067	1,480

**SOLDIER PILE SCHEDULE & DETAILS  
STRUCTURE NO. 049-W019**



FILE NAME = 0168953-06-sched.det.dgn	USER NAME =	DESIGNED - J.C.N./B.N.S.	REVISED -	<b>STATE OF ILLINOIS DEPARTMENT OF TRANSPORTATION</b>	<b>SOLDIER PILE SCHEDULE &amp; DETAILS STRUCTURE NO. 049-W019</b>	F.A.P. RTE. = 330	SECTION = 128R-3	COUNTY = LAKE	TOTAL SHEETS = 518	SHEET NO. = 306
PLOT SCALE =	CHECKED - B.N.S.	REVISED -	SHEET NO. S3-6 OF S3-9 SHEETS			CONTRACT NO. 60953				
PLOT DATE =	DRAWN - F.M.	REVISED -	ILLINOIS FED. AID PROJECT							
	CHECKED - B.N.S./J.C.N.	REVISED -								