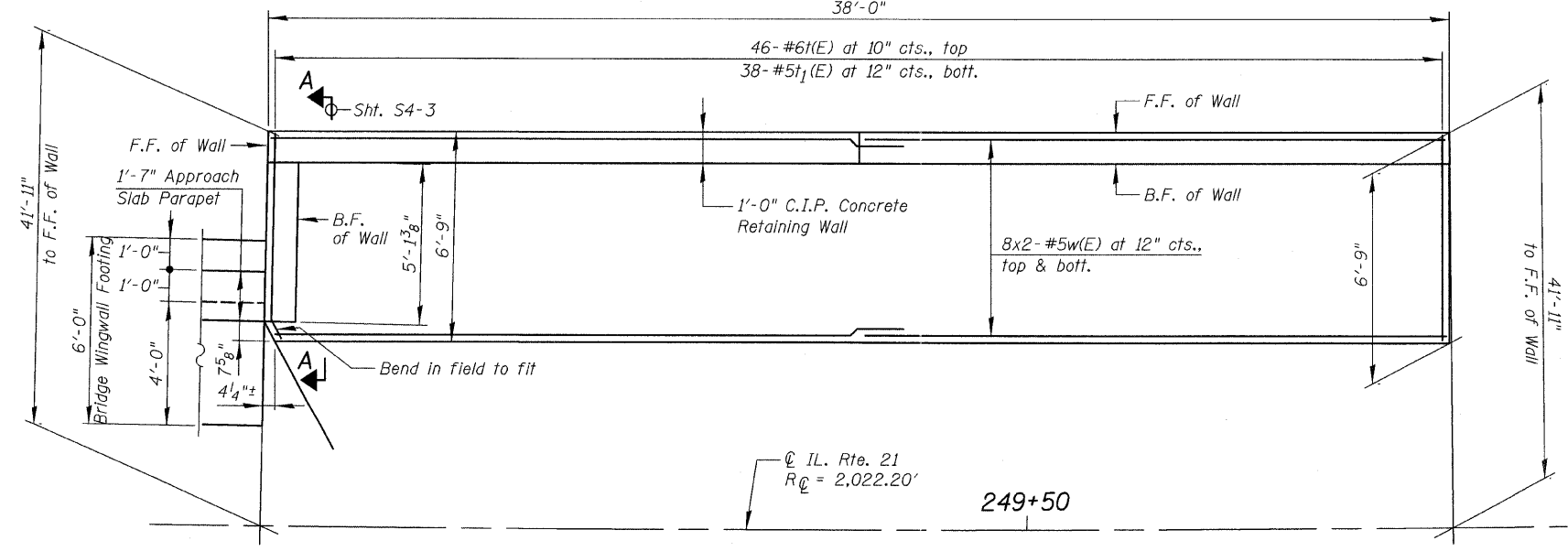


ELEVATION
(Looking at B.F. of Wall)



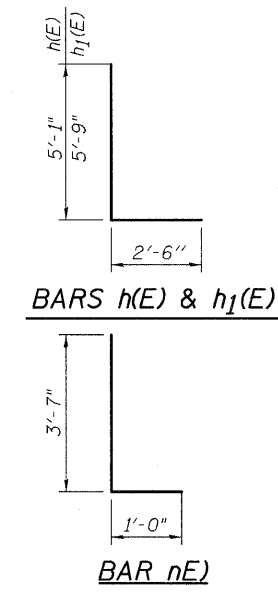
PLAN
(Showing Footing Reinforcement)

GENERAL NOTES:

1. Reinforcement Bars shall conform to the requirements of ASTM A 706, Gr. 60. See Special Provisions.
2. All Exposed Concrete edges shall be chamfered 3/4" unless otherwise noted.
3. Reinforcement Bars designated (E) shall be Epoxy Coated.

BILL OF MATERIAL

Bar	No.	Size	Length	Shape
h(E)	11	#5	7'-7"	L
h1(E)	11	#5	8'-3"	L
h2(E)	22	#5	21'-6"	—
h3(E)	22	#5	18'-8"	—
n(E)	88	#6	4'-7"	L
t(E)	46	#6	6'-5"	—
t1(E)	38	#5	6'-5"	—
v(E)	88	#5	9'-6"	—
w(E)	32	#5	20'-1"	—
Reinforcement Bars, Epoxy Coated			Pound	3,950
Concrete Structures			Cu. Yd.	25.2



MIN. BAR LAP:
#5 bars = 2'-6"
#6 bars = 3'-0"

LEGEND:

- E.F. = Each Face
- F.F. = Front Face
- B.F. = Back Face
- C.I.P. = Cast-In-Place
- (C) = Construction Joint
- [1] = Panel Numbers

PLAN & ELEVATION
STRUCTURE NO. 049-W020



FILE NAME = D:\68963-02-plan.elevation.dgn	USER NAME =	DESIGNED - J.C.N./B.N.S.	REVISIONS -	STATE OF ILLINOIS DEPARTMENT OF TRANSPORTATION	PLAN & ELEVATION STRUCTURE NO. 049-W020	F.A.P. RTE. = 330	SECTION = 128R-3	COUNTY = LAKE	TOTAL SHEETS = 518	SHEET NO. = 311		
PLOT SCALE =	DRAWN - F.M.	REVISIONS -	SHEET NO. S4-2 OF S4-5 SHEETS			CONTRACT NO. 60953		ILLINOIS FED. AID PROJECT				
PLOT DATE =	CHECKED - B.N.S./J.C.N.	REVISIONS -										