

**ELEVATION**  
(Looking at F.F. of Wall)

\*See Sht.'s. S5-2 thru S5-4 for pile sections, spacings and tip elevations

**GENERAL NOTES:**

1. The Contractor is responsible for the design and performance of the lagging using no less than a 3 in. nominal rough-sawn thickness and timber with a minimum allowable bending stress of 1000 psi.
2. Pipe Underdrain Outlet Pipes shall drain into concrete headwalls. See Article 601.05 of the Standard Specifications and see Highway Standard 601101.
3. Reinforcement Bars shall conform to the requirements of ASTM A 706, Gr. 60. See Special Provisions.
4. All Exposed Concrete edges shall be chamfered 3/4" unless otherwise noted.
5. Reinforcement Bars designated (E) shall be Epoxy Coated.

**BILL OF MATERIAL**

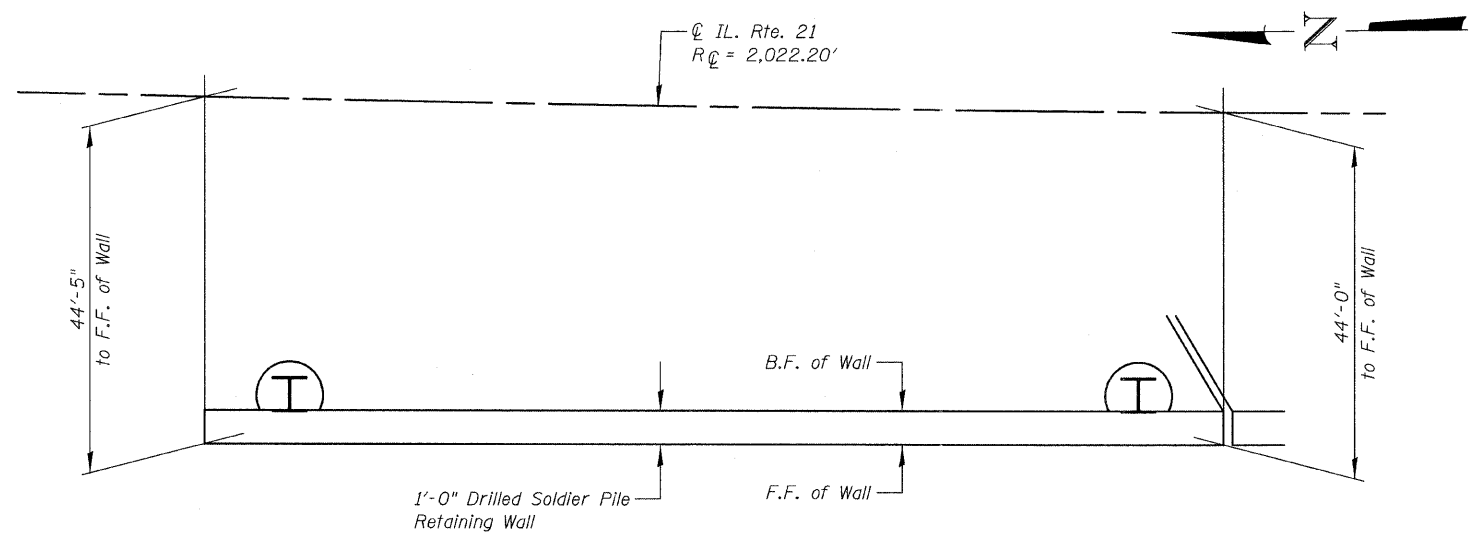
Bar	No.	Size	Length	Shape	
h(E)	26	#6	29'-8"	—	
v(E)	60	#6	12'-2"	—	
Reinforcement Bars, Epoxy Coated				Pound	2,260
Concrete Structures				Cu. Yd.	13.8

**LEGEND:**

- E.F. = Each Face
- F.F. = Front Face
- B.F. = Back Face

**CURVE DATA**

@ IL. Rte. 21  
 $\Delta = 46^{\circ}-11'-38''$   
 $D = 2^{\circ}-50'-00''$   
 $T = 862.41'$   
 $L = 1,630.37'$   
 $E = 176.22'$   
 $R = 2,022.20'$   
 $S.E. = 2.90\%$   
 $P.C. Sta. = 243+66.70$   
 $P.T. Sta. = 259+97.07$   
 $P.I. Sta. = 252+29.11$



**PLAN**

**PLAN & ELEVATION**  
**STRUCTURE NO. 049-W021**



FILE NAME = 0168953-02-plan-elev.dgn	USER NAME =	DESIGNED - J.C.N./B.N.S.	REVISIONS -	<b>STATE OF ILLINOIS</b> <b>DEPARTMENT OF TRANSPORTATION</b>	<b>PLAN &amp; ELEVATION</b> <b>STRUCTURE NO. 049-W021</b>	F.A.P. RTE. 330	SECTION 128R-3	COUNTY LAKE	TOTAL SHEETS 518	SHEET NO. 316		
PLOT SCALE =	CHECKED - B.N.S.	REVISIONS -	SHEET NO. S5-2 OF S5-6 SHEETS			CONTRACT NO. 60953		ILLINOIS FED. AID PROJECT				
PLOT DATE =	DRAWN - F.M.	REVISIONS -										
	CHECKED - B.N.S./J.C.N.	REVISIONS -										