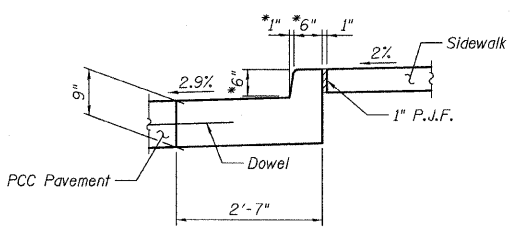


DETAIL A
(at Sta. 248+30.94 at bridge)
(Offset 33.00 RT.)

*Curb size transitions from
Sta. 248+07.31 to Sta. 248+30.94.



DETAIL B
(at Sta. 248+07.31)
(Offset 33.00 RT.)

TYPICAL WALL SECTION
(Looking South)

RETAINING WALL SECTION
STRUCTURE NO. 049-W021



FILE NAME = D168953-83-ret-wall.sections.dgn	USER NAME =	DESIGNED - J.C.N./B.N.S.	REVISED -	STATE OF ILLINOIS DEPARTMENT OF TRANSPORTATION	RETAINING WALL SECTION STRUCTURE NO. 049-W021	F.A.P. RTE. =	SECTION	COUNTY	TOTAL SHEETS	SHEET NO.
	PLOT SCALE =	CHECKED - B.N.S.	REVISED -			330	128R-3	LAKE	518	317
	PLOT DATE =	DRAWN - F.M.	REVISED -			CONTRACT NO. 60953				
		CHECKED - B.N.S./J.C.N.	REVISED -			ILLINOIS FED. AID PROJECT				

SHEET NO. S5-3 OF S5-6 SHEETS