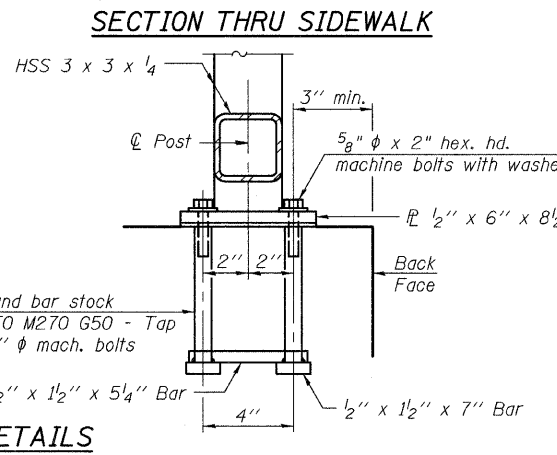
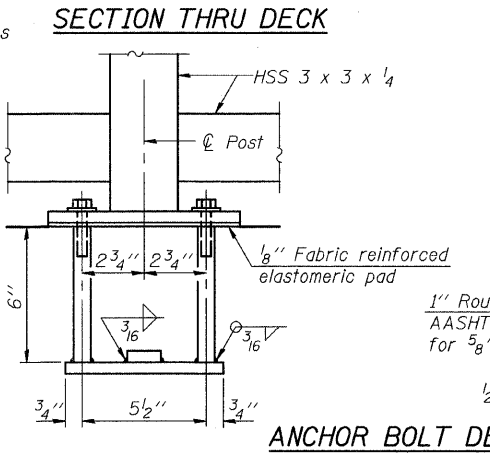
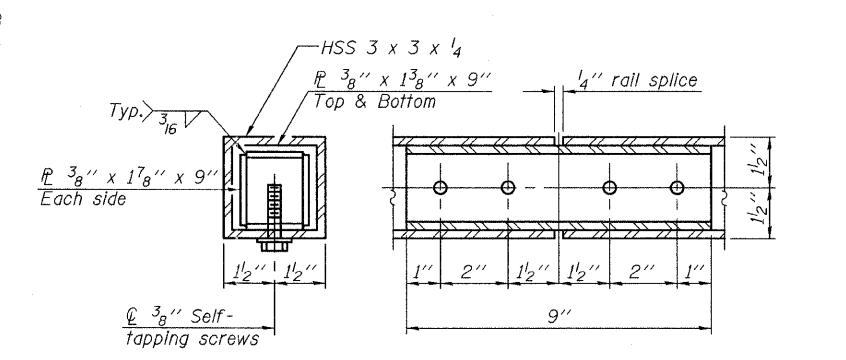
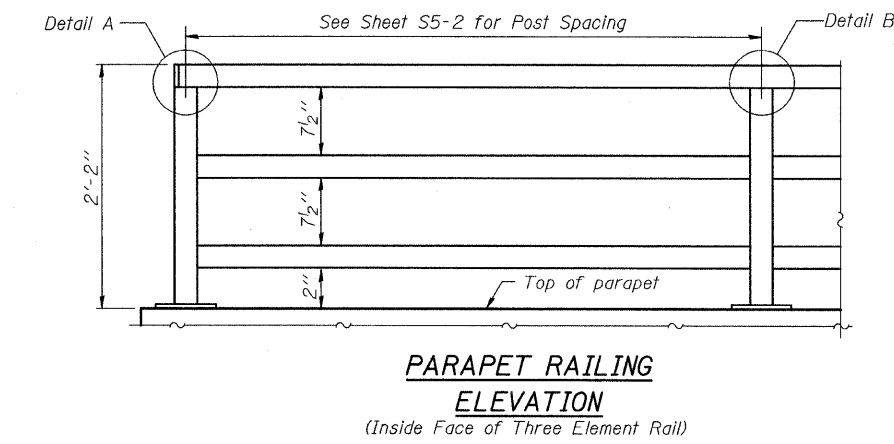
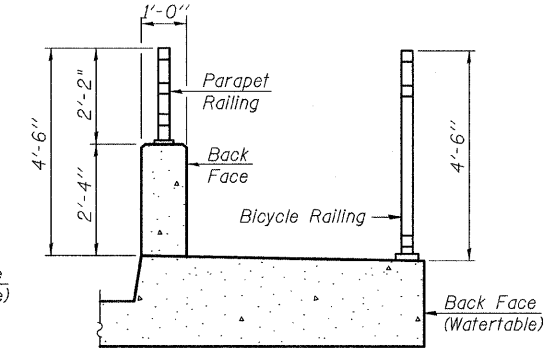
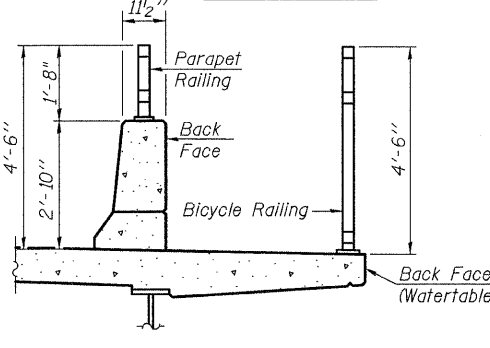
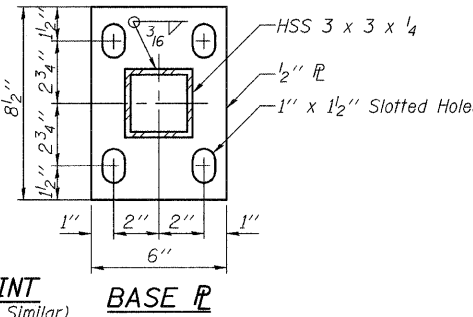
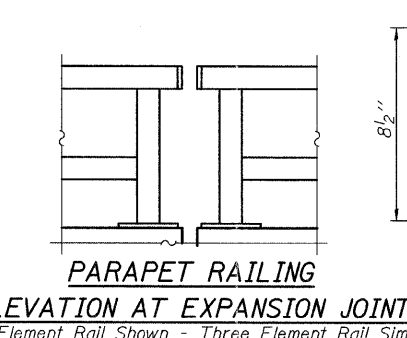
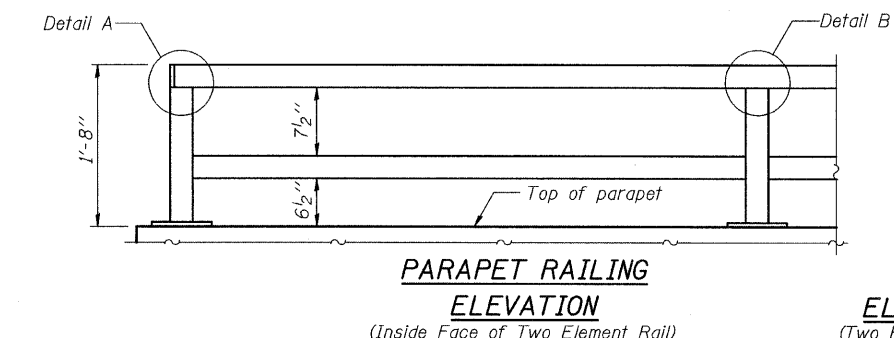


All steel rail elements shall be galvanized according to Article 509.05 of the Standard Specifications.



In lieu of the cast-in-place anchor device shown, the Contractor has the option of drilling and setting 5/8" φ anchor rods according to Article 509.06 of the Standard Specifications. Embedment shall be according to the manufacturer's specifications.

**BILL OF MATERIAL**

Item	Unit	Quantity
Parapet Railing	Foot	30

**PARAPET RAILING STRUCTURE NO. 049-W021**

R-29 7-1-10 (10'-0" Maximum Post Spacing)

FILE NAME = 0168953-05-par_railing.dgn	USER NAME =	DESIGNED - J.C.N./B.N.S.	REVISED -
		CHECKED - B.N.S.	REVISED -
		DRAWN - F.M.	REVISED -
		CHECKED - B.N.S./J.C.N.	REVISED -

**STATE OF ILLINOIS DEPARTMENT OF TRANSPORTATION**

**PARAPET RAILING STRUCTURE NO. 049-W021**  
SHEET NO. S5-5 OF S5-6 SHEETS

F.A.P. RTE. 330	SECTION 128R-3	COUNTY LAKE	TOTAL SHEETS 518	SHEET NO. 319
				CONTRACT NO. 60953
ILLINOIS FED. AID PROJECT				

**CHRISTIAN-ROGE & ASSOCIATES, INC.**