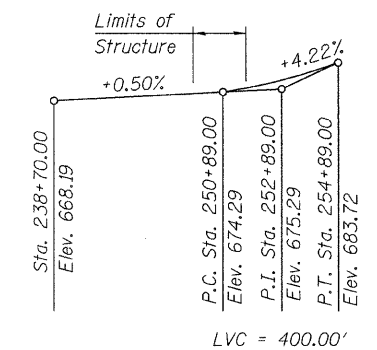
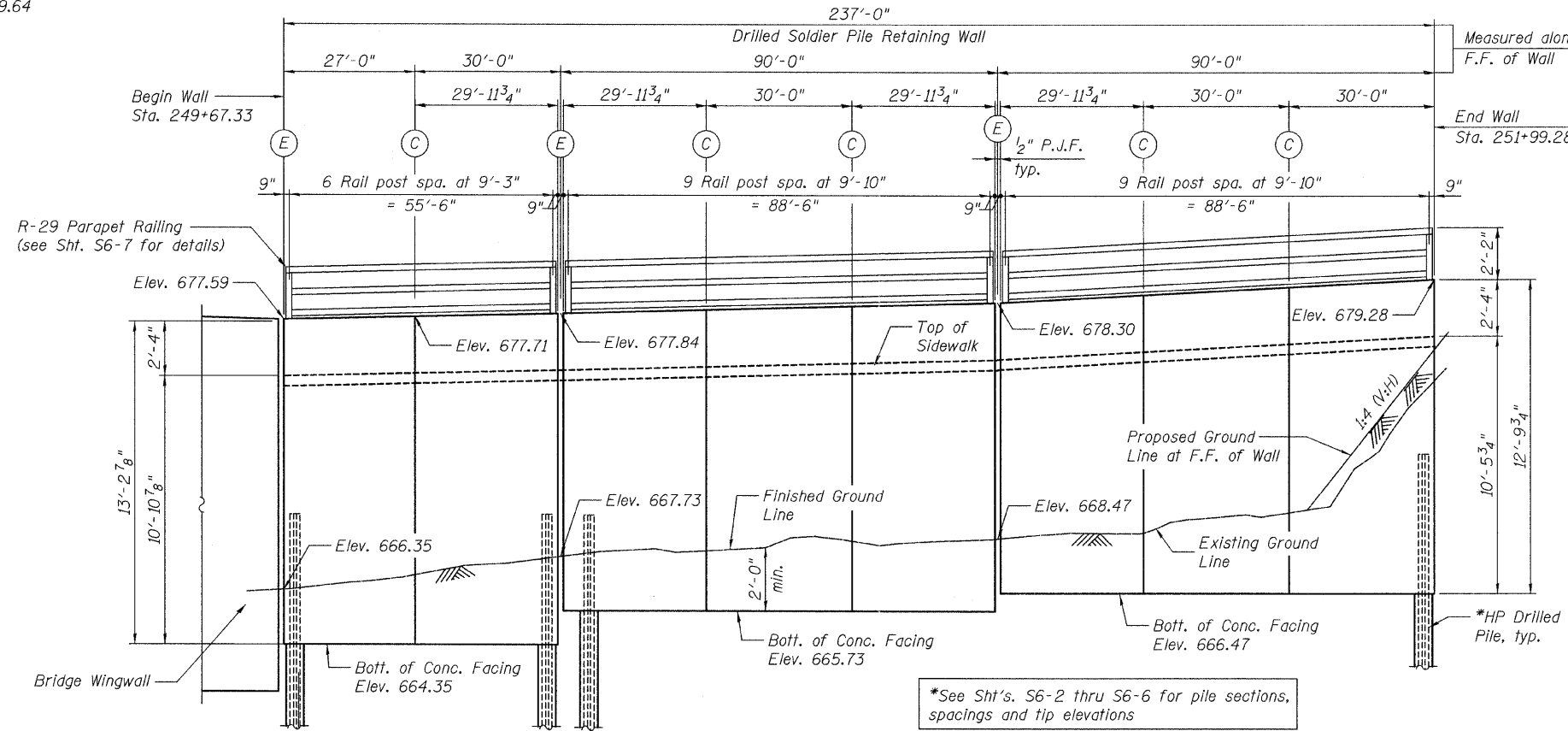


Bench Mark:
Chiseled box on top of S.E. wingwall of bridge.
Elevation 669.64



PROFILE GRADE
(Along SB P.G.L.)

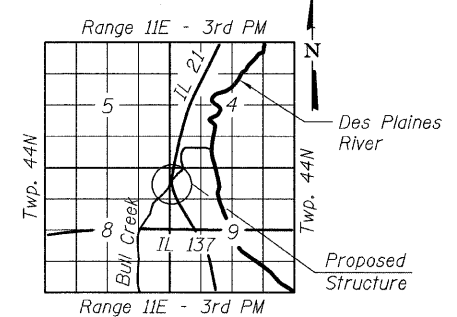
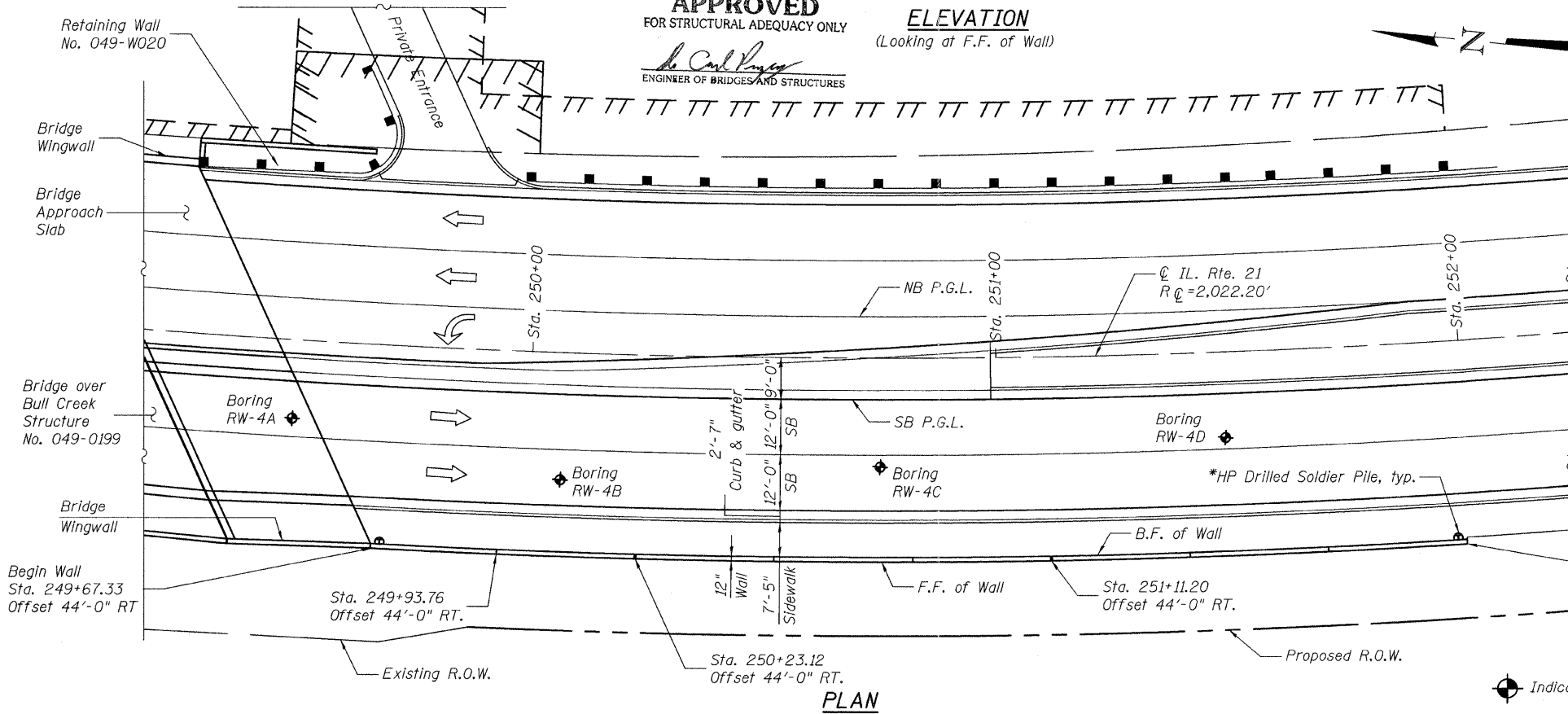
LEGEND:
F.F. = Front Face
B.F. = Back Face
C = Construction Joint
E = Expansion Joint

CURVE DATA

CL IL. Rte. 21
Δ = 46°-11'-38"
D = 2°-50'-00"
T = 862.41'
L = 1,630.37'
E = 176.22'
R = 2,022.20'
S.E. = 2.90%
P.C. Sta. = 243+66.70
P.T. Sta. = 259+97.07
P.I. Sta. = 252+29.11

*See Sht's. S6-2 thru S6-6 for pile sections, spacings and tip elevations

APPROVED
FOR STRUCTURAL ADEQUACY ONLY
Dr. Carl P. ...
ENGINEER OF BRIDGES AND STRUCTURES



LOCATION SKETCH



Bhadrish N. Shah
BHADRISH N. SHAH
LICENSED STRUCTURAL ENGINEER
STATE OF ILLINOIS LIC. No. 081-004476
EXPIRES: 11-30-12

GENERAL PLAN & ELEVATION
ILLINOIS ROUTE 21 - RETAINING WALL NO. 6
F.A.P. 330 SEC. 128R-3
LAKE COUNTY
STATION 249+67.33 TO 251+99.28
STRUCTURE NO. 049-W022

Note: Offsets are measured from the CL of IL. Rte. 21



FILE NAME = D168953-01-GPE.dgn	USER NAME =	DESIGNED - J.C.N./B.N.S.	REVISIONS -	STATE OF ILLINOIS DEPARTMENT OF TRANSPORTATION	GENERAL PLAN & ELEVATION STRUCTURE NO. 049-W022	F.A.P. RTE. = 330	SECTION = 128R-3	COUNTY = LAKE	TOTAL SHEETS = 518	SHEET NO. = 321		
PLOT SCALE =	CHECKED - B.N.S.	REVISIONS -	SHEET NO. S6-1 OF S6-9 SHEETS			CONTRACT NO. 60953		ILLINOIS FED. AID PROJECT				
PLOT DATE =	DRAWN - F.M.	REVISIONS -										
	CHECKED - B.N.S./J.C.N.	REVISIONS -										