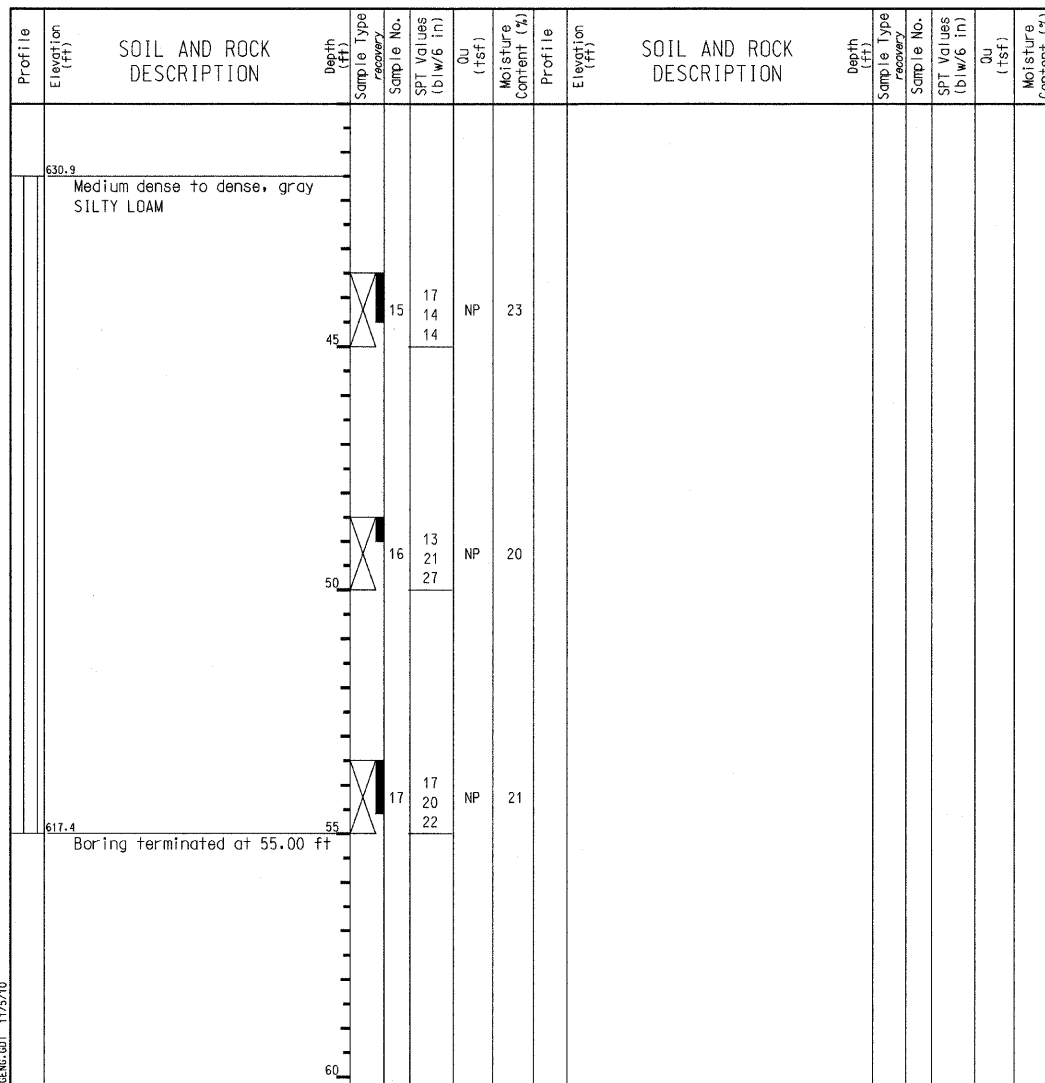


GENERAL NOTES
 Begin Drilling 04-10-2001 Complete Drilling 04-10-2001
 Drilling Contractor Rock and Soil Drilling Drill Rig D-120
 Driller, Dave Logger, T. Chen Checked by P. Wang
 Drilling Method 4.25" ID HSA; backfilled w/ bentonite chip and blacktop; rotary wash after 20 ft.

WATER LEVEL DATA
 While Drilling 13.50 ft
 At Completion of Drilling 9.00 ft
 Time After Drilling 24 hours
 Depth to Water NA
 The stratification lines represent the approximate boundary between soil types; the actual transition may be gradual.



GENERAL NOTES
 Begin Drilling 04-10-2001 Complete Drilling 04-10-2001
 Drilling Contractor Rock and Soil Drilling Drill Rig D-120
 Driller, Dave Logger, T. Chen Checked by P. Wang
 Drilling Method 4.25" ID HSA; backfilled w/ bentonite chip and blacktop; rotary wash after 20 ft.

WATER LEVEL DATA
 While Drilling 13.50 ft
 At Completion of Drilling 9.00 ft
 Time After Drilling 24 hours
 Depth to Water NA
 The stratification lines represent the approximate boundary between soil types; the actual transition may be gradual.

**SOIL BORING LOGS-I
 STRUCTURE NO. 049-W022**



FILE NAME = D168953-08-boring_logs-1.dgn	USER NAME =	DESIGNED - J.C.N./B.N.S.	REVISED -
		CHECKED - B.N.S.	REVISED -
		DRAWN - F.M.	REVISED -
		CHECKED - B.N.S./J.C.N.	REVISED -

**STATE OF ILLINOIS
 DEPARTMENT OF TRANSPORTATION**

**SOIL BORING LOGS-I
 STRUCTURE NO. 049-W022**
 SHEET NO. S6-8 OF S6-9 SHEETS

F.A.P. RTE. 330	SECTION 128R-3	COUNTY LAKE	TOTAL SHEETS 518	SHEET NO. 328
CONTRACT NO. 60953				
ILLINOIS FED. AID PROJECT				