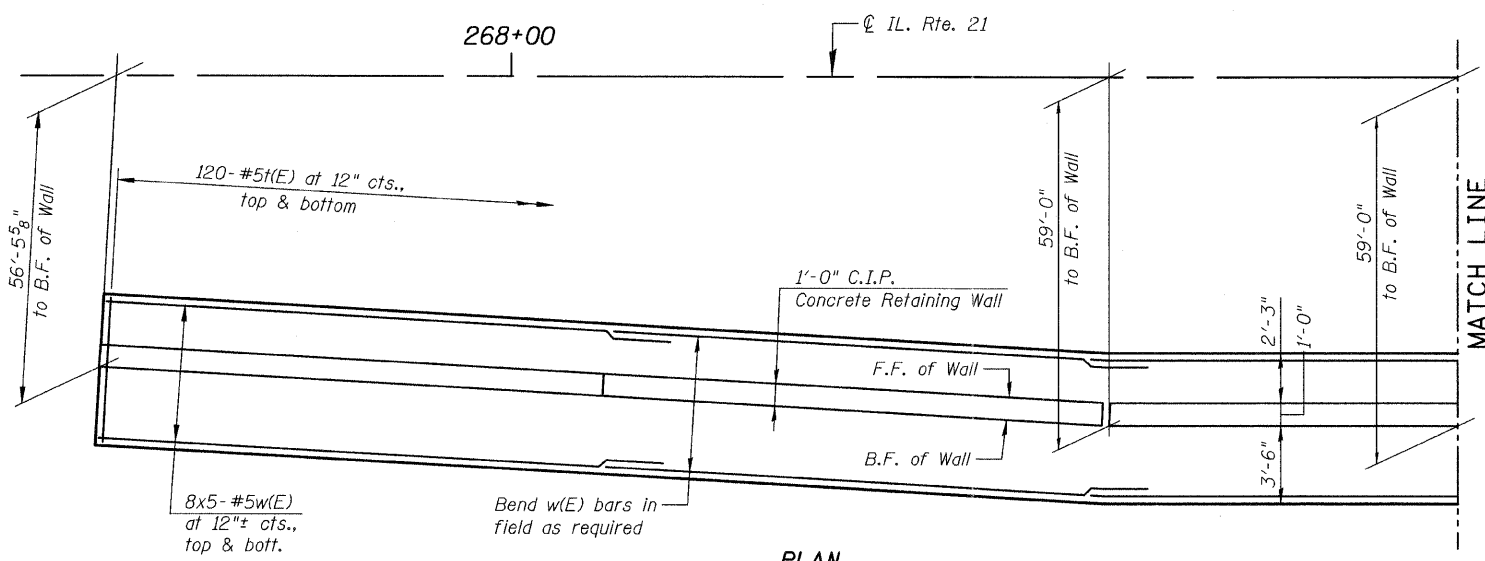


**ELEVATION**  
(Looking at B.F. of Wall)



**PLAN**

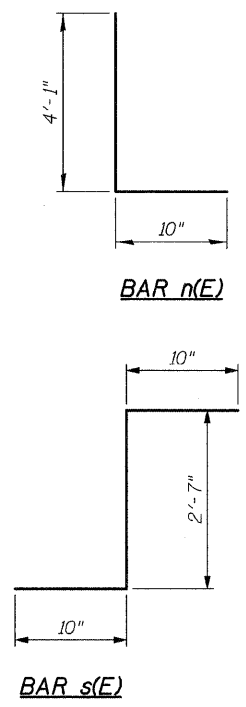
**GENERAL NOTES:**

1. Pipe Underdrain Outlet Pipes shall drain into concrete headwalls. See Article 601.05 of the Standard Specifications and see Highway Standard 601101.
2. Reinforcement Bars shall conform to the requirements of ASTM A 706, Gr. 60. See Special Provisions.
3. All Exposed Concrete edges shall be chamfered 3/4" unless otherwise noted.
4. Reinforcement Bars designated (E) shall be Epoxy Coated.

**LEGEND:**

- E.F. = Each Face
- F.F. = Front Face
- B.F. = Back Face
- C.I.P. = Cast-In-Place
- (C) = Construction Joint
- (E) = Expansion Joint
- [1] = Panel Numbers

**MIN. BAR LAP:**  
#5 bars = 2'-6"



**BILL OF MATERIAL**

Bar	No.	Size	Length	Shape
h(E)	14	#5	24'-9"	—
h1(E)	14	#5	21'-11"	—
h2(E)	28	#5	27'-8"	—
h3(E)	14	#5	24'-11"	—
n(E)	240	#5	4'-11"	L
s(E)	120	#5	4'-3"	J
t(E)	240	#5	6'-5"	—
v(E)	240	#5	5'-11"	—
w(E)	80	#5	26'-0"	—
Reinforcement Bars, Epoxy Coated			Pound	8,870
Concrete Structures			Cu. Yd.	80.0

**PLAN & ELEVATION-I**  
**STRUCTURE NO. 049-W023**



FILE NAME = D168953-02-plan.elev-1.dgn	USER NAME =	DESIGNED - J.C.N./B.N.S.	REVISED -	<b>STATE OF ILLINOIS</b> <b>DEPARTMENT OF TRANSPORTATION</b>	<b>PLAN &amp; ELEVATION-I</b> <b>STRUCTURE NO. 049-W023</b>	F.A.P. RTE. 330	SECTION 128R-3	COUNTY LAKE	TOTAL SHEETS 518	SHEET NO. 331
PLOT SCALE =	DRAWN - F.M.	REVISED -	SHEET NO. S7-2 OF S7-6 SHEETS			CONTRACT NO. 60953				
PLOT DATE =	CHECKED - B.N.S./J.C.N.	REVISED -	ILLINOIS FED. AID PROJECT							