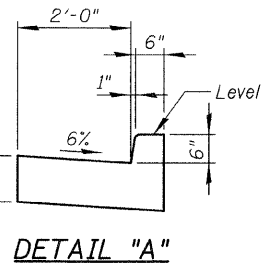


**NOTE:**  
If the Contractor chooses to alter the temporary cantilevered sheet piling design requirements shown on the plans, a design submittal including plan details and calculations will be required for review and acceptance by the Engineer.

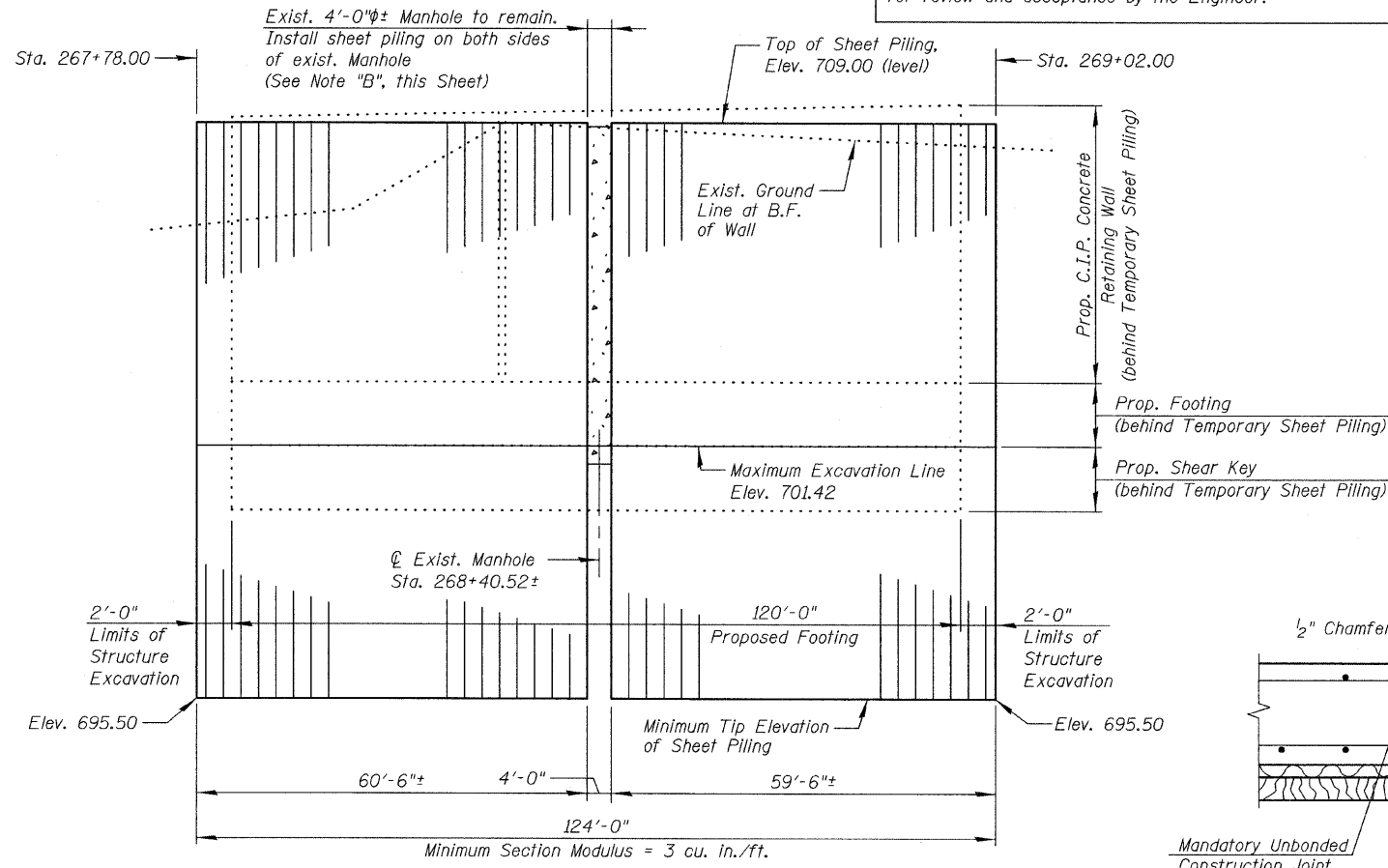


**LEGEND:**  
F.F. = Front Face  
B.F. = Back Face  
C.I.P. = cast-In-Place

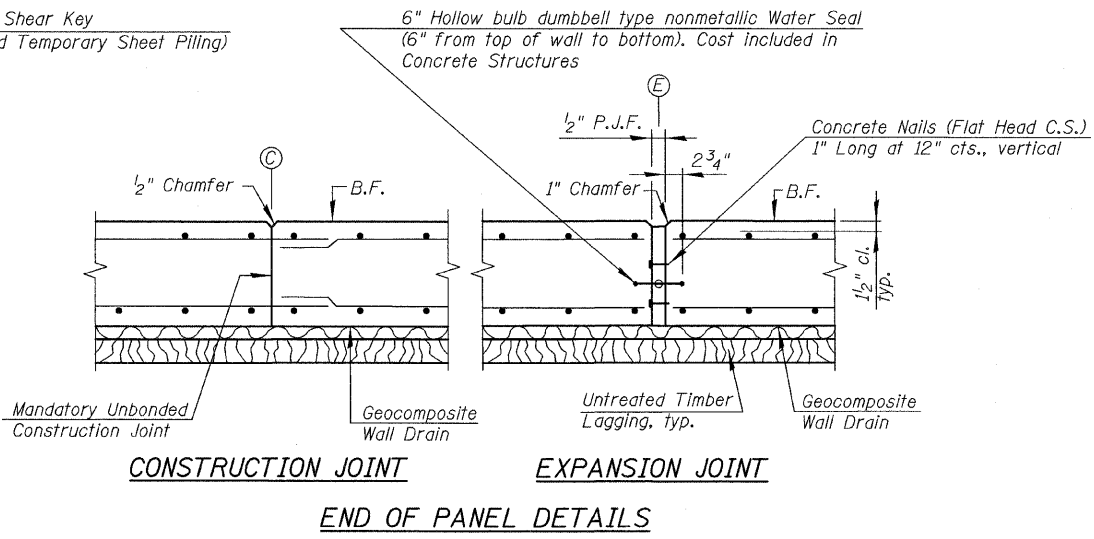
\*\*Pipe Underdrain (see Pipe Underdrain Detail, this Sheet)

**NOTE "A"**  
The Contractor must use extreme cautions as not to damage or disturb the exist. 8" storm sewer. The Contractor must locate the exist. 8" storm sewer prior to driving the temporary sheet piling.

**NOTE "B"**  
The Contractor must use extreme caution as not to damage or disturb the exist. manhole. If necessary, the proposed footing must be notched to avoid the exist. manhole and cut reinforcement to fit within the notched area.



**ELEVATION  
TEMPORARY SHEET PILING**  
(Looking at B.F. of Wall)



**CONSTRUCTION JOINT  
EXPANSION JOINT**  
END OF PANEL DETAILS

**RETAINING WALL SECTION  
STRUCTURE NO. 049-W023**



FILE NAME = D168953-04-ret.wall.sect.dgn	USER NAME =	DESIGNED - J.C.N./B.N.S.	REVISD -	<b>STATE OF ILLINOIS DEPARTMENT OF TRANSPORTATION</b>	<b>RETAINING WALL SECTION STRUCTURE NO. 049-W023</b>	F.A.P. RTE. 330	SECTION 128R-3	COUNTY LAKE	TOTAL SHEETS 518	SHEET NO. 333
PLOT SCALE =	DRAWN - F.M.	REVISD -	SHEET NO. S7-4 OF S7-6 SHEETS			CONTRACT NO. 60953				
PLOT DATE =	CHECKED - B.N.S./J.C.N.	REVISD -	ILLINOIS FED. AID PROJECT							