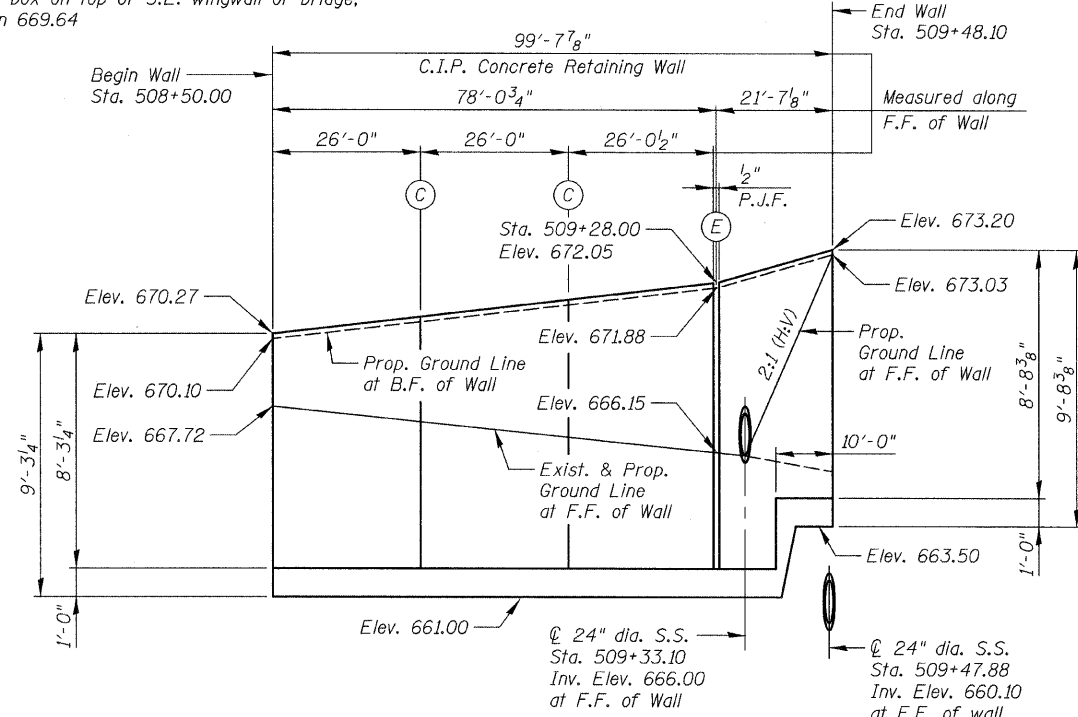
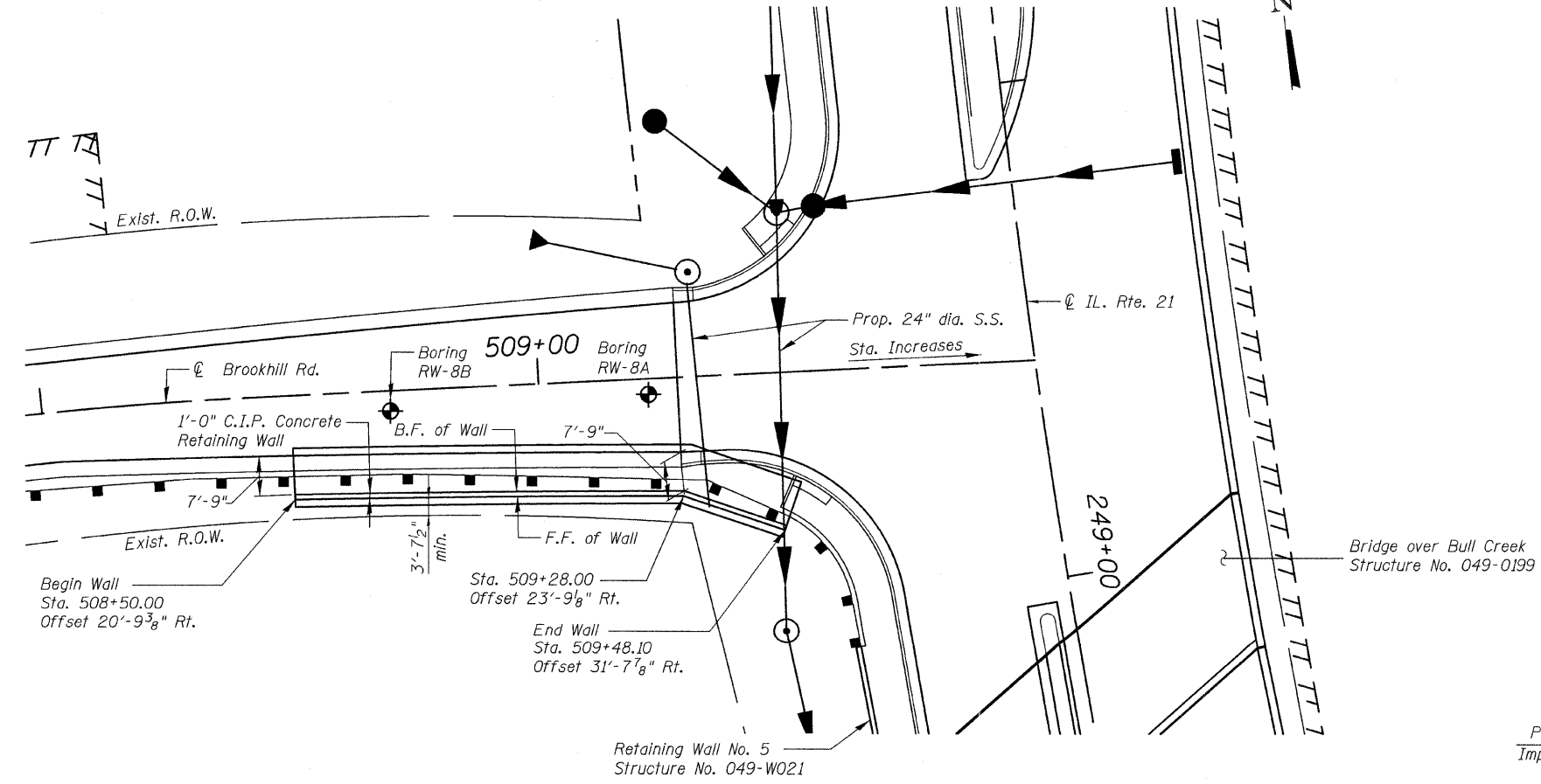


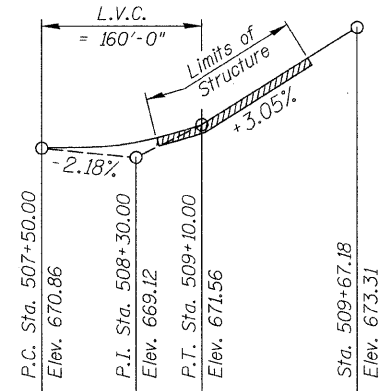
Bench Mark:  
Chiseled box on top of S.E. wingwall of bridge,  
Elevation 669.64



**ELEVATION**  
(Looking at F.F. of Wall)



**PLAN**



**PROFILE GRADE**

**LEGEND:**  
F.F. = Front Face  
B.F. = Back Face  
C.I.P. = Cast-In-Place  
C = Construction Joint  
E = Expansion Joint

**DESIGN SPECIFICATIONS**

AASHTO 2002 Standard  
Specifications for Highway Bridges

**DESIGN STRESSES**

**FIELD UNITS**  
 $f'_c = 3,500$  psi  
 $f_y = 60,000$  psi (Reinforcement)

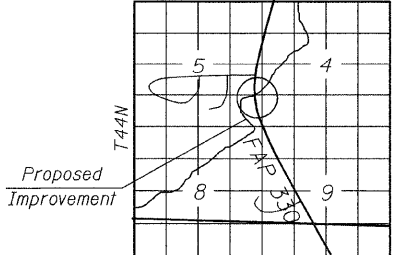
**INDEX OF SHEETS**

S8-1	GENERAL PLAN & ELEVATION
S8-2	PLAN & ELEVATION-I
S8-3	RETAINING WALL SECTION
S8-4	SOIL BORING LOGS

**TOTAL BILL OF MATERIAL**

DESCRIPTION	UNIT	QUANTITY
Structure Excavation	Cu. Yd.	349
Concrete Structures	Cu. Yd.	80.2
Form Liner Textured Surface	Sq. Ft.	487
Reinforcement Bars, Epoxy Coated	Pound	12,030
Geocomposite Wall Drain	Sq. Yd.	27
Concrete Gutter, Type B	Foot	100
Porous Granular Embankment, Special	Cu. Yd.	36
Stain For Concrete Structures	Sq. Yd.	55

**LOCATION SKETCH**



*Bhadrish N. Shah*  
BHADRISH N. SHAH  
LICENSED STRUCTURAL ENGINEER  
STATE OF ILLINOIS LIC. No. 081-004476  
EXPIRES: 11-30-12

**GENERAL PLAN & ELEVATION**  
**ILLINOIS ROUTE 21 - RETAINING WALL NO. 8**  
**F.A.P. 330 SEC. 128R-3**  
**LAKE COUNTY**  
**STATION 508+50.00 TO 509+48.10**  
**STRUCTURE NO. 049-W042**



FILE NAME = D168453-01-GPE.dgn	USER NAME =	DESIGNED - J.C.N./B.N.S.	REVISIONS	<b>STATE OF ILLINOIS</b> <b>DEPARTMENT OF TRANSPORTATION</b>	<b>GENERAL PLAN &amp; ELEVATION</b> <b>STRUCTURE NO. 049-W042</b>	F.A.P. RTE. = 330	SECTION = 128R-3	COUNTY = LAKE	TOTAL SHEETS = 518	SHEET NO. = 336
PLOT SCALE =	CHECKED - B.N.S.	REVISIONS	SHEET NO. S8-1 OF S8-4 SHEETS			CONTRACT NO. 60953				
PLOT DATE =	DRAWN - F.M.	REVISIONS	ILLINOIS FED. AID PROJECT							
	CHECKED - B.N.S./J.C.N.	REVISIONS								