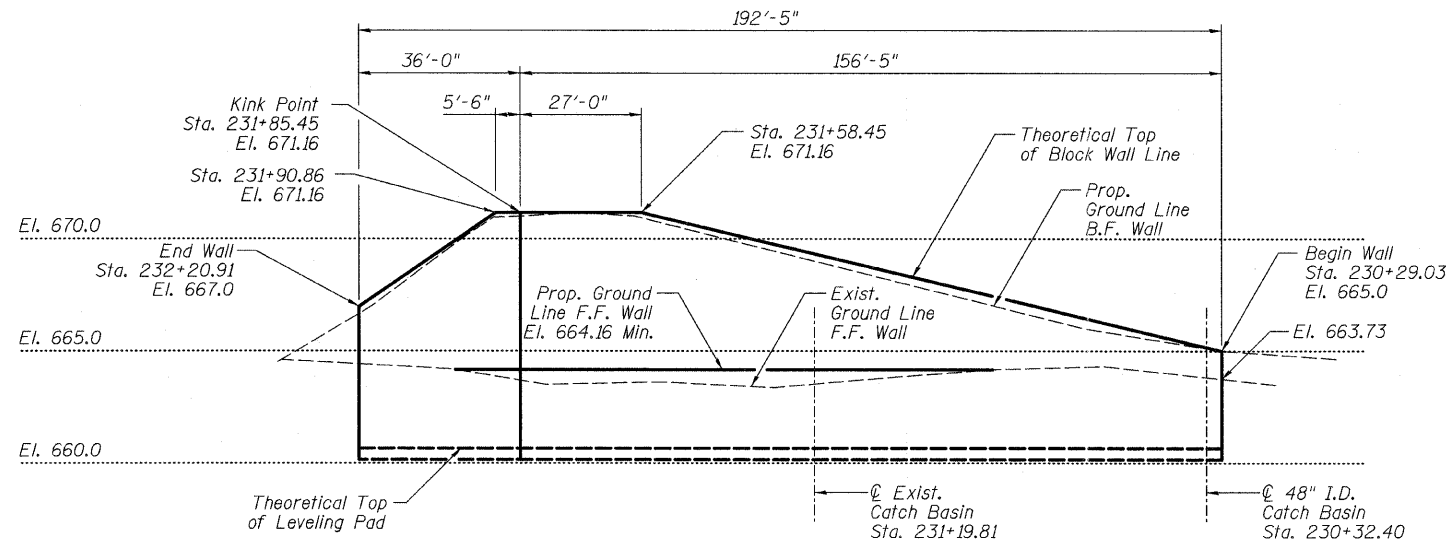
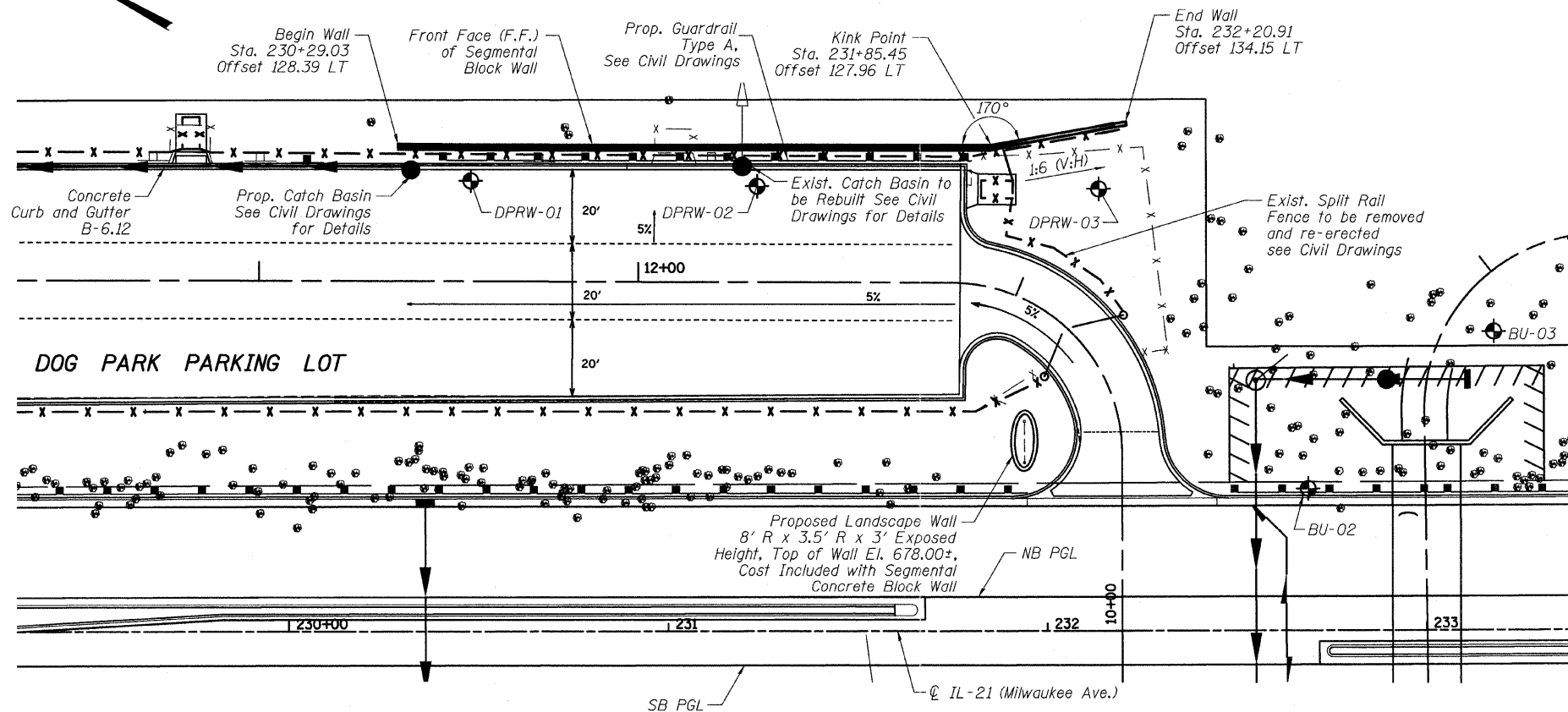


Bench Mark: Chiseled box on top of S.E. wingwall of the existing bridge over Bull Creek, El. 669.64.

Existing Structure: None.



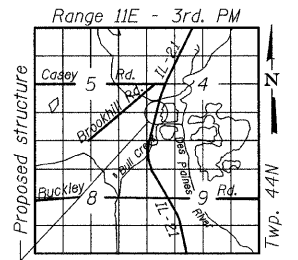
ELEVATION
(Looking at F.F. of Wall)



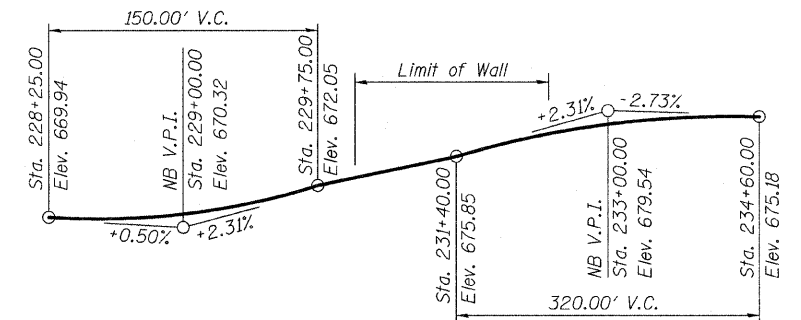
PLAN

Notes:

1. Wall dimensions are measured along F.F. of wall.
2. Stations and offsets for the wall are given from the C IL-21 to the F.F. of wall at proposed wall cap. See proposed cross-section on sheet S10-2 for other details.



LOCATION SKETCH



PROFILE GRADE
(Along NB PGL - IL21)

DESIGN STRESSES

See Segmental Block Wall Special Provision

DESIGN SPECIFICATIONS

2002 AASHTO Standard Specifications for Highway Bridges (17th Edition)

See Segmental Block Wall Special Provision

Legend:

- F.F. Front Face
- B.F. Back Face
- ⊕ Boring Location
- ⊙ Tree, to Remain

GENERAL PLAN AND ELEVATION
IL-21 (MILWAUKEE AVENUE) - RETAINING WALL NO. 10
DOG PARK PARKING LOT
F.A.P. 330 - SEC. 128R-3
LAKE COUNTY
STATION 230+29.03 TO 232+20.91

FILE NAME =	USER NAME =	DESIGNED - EM	REVISOR -	STATE OF ILLINOIS DEPARTMENT OF TRANSPORTATION	GENERAL PLAN AND ELEVATION STRUCTURE NO. 000-0000	F.A.P. RTE. 330	SECTION 128R-3	COUNTY LAKE	TOTAL SHEETS 518	SHEET NO. 349	
	PLOT SCALE =	CHECKED - JMH	REVISOR -			SHEET NO. S10-1 OF S10-3 SHEETS		CONTRACT NO. 60953		ILLINOIS FED. AID PROJECT	
	PLOT DATE =	DRAWN - DR	REVISOR -								
		CHECKED - JMH	REVISOR -								