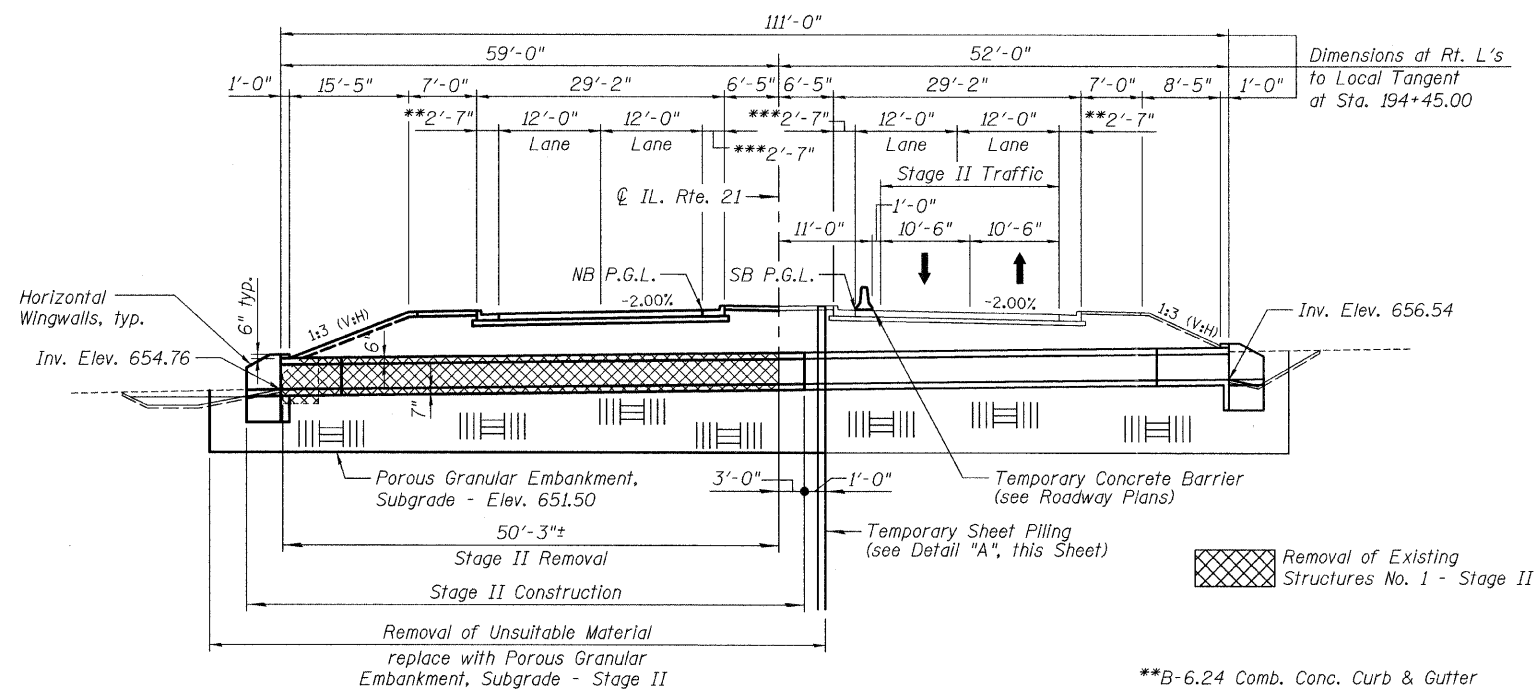
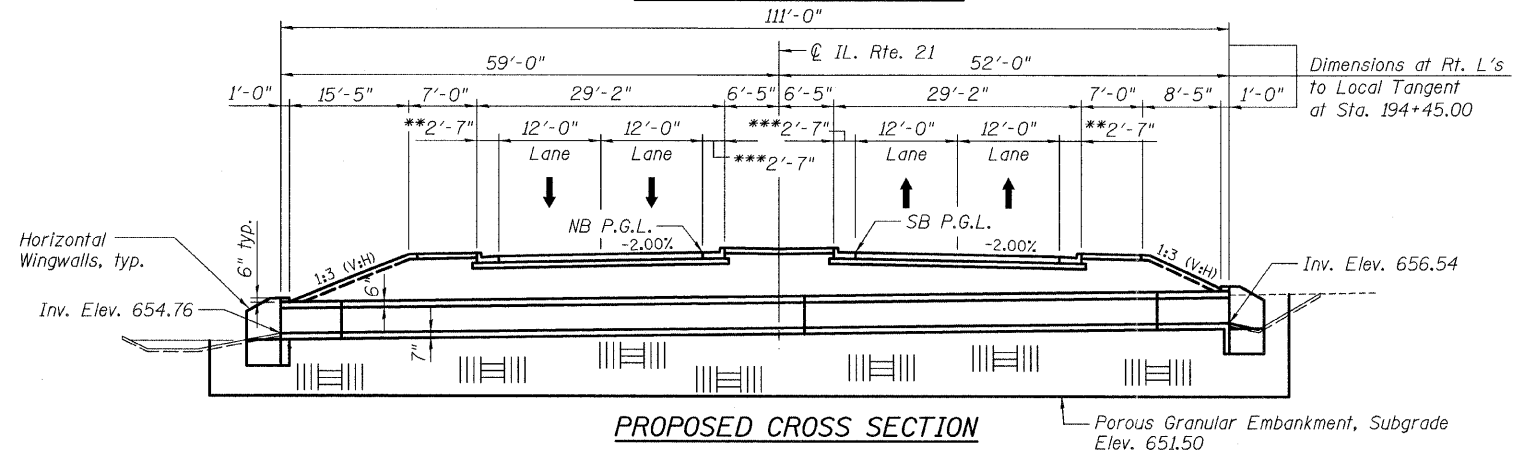


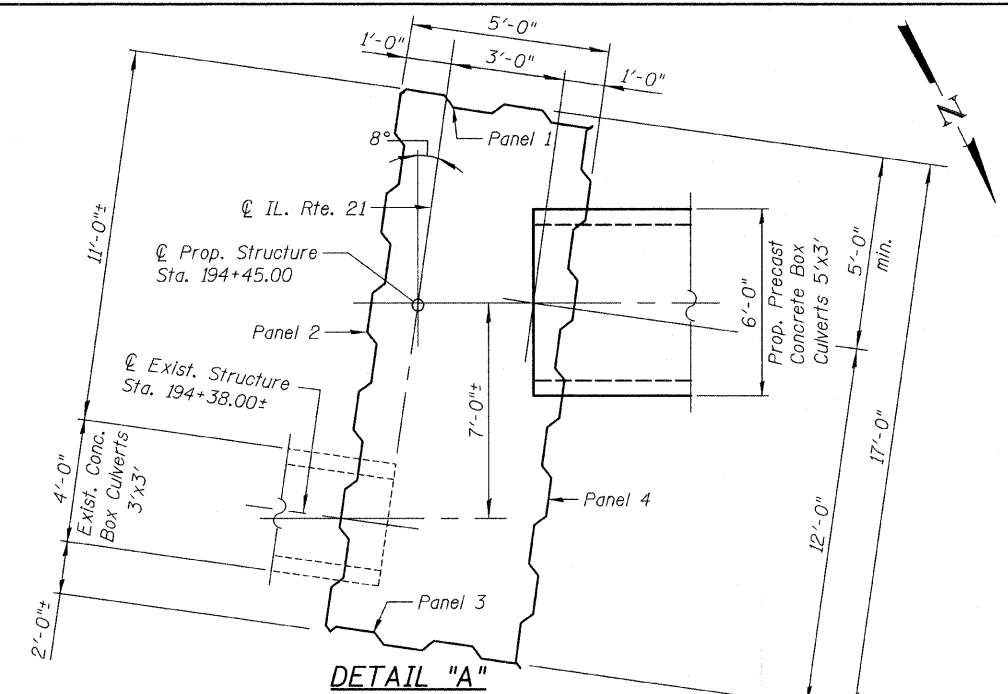
STAGE I CONSTRUCTION



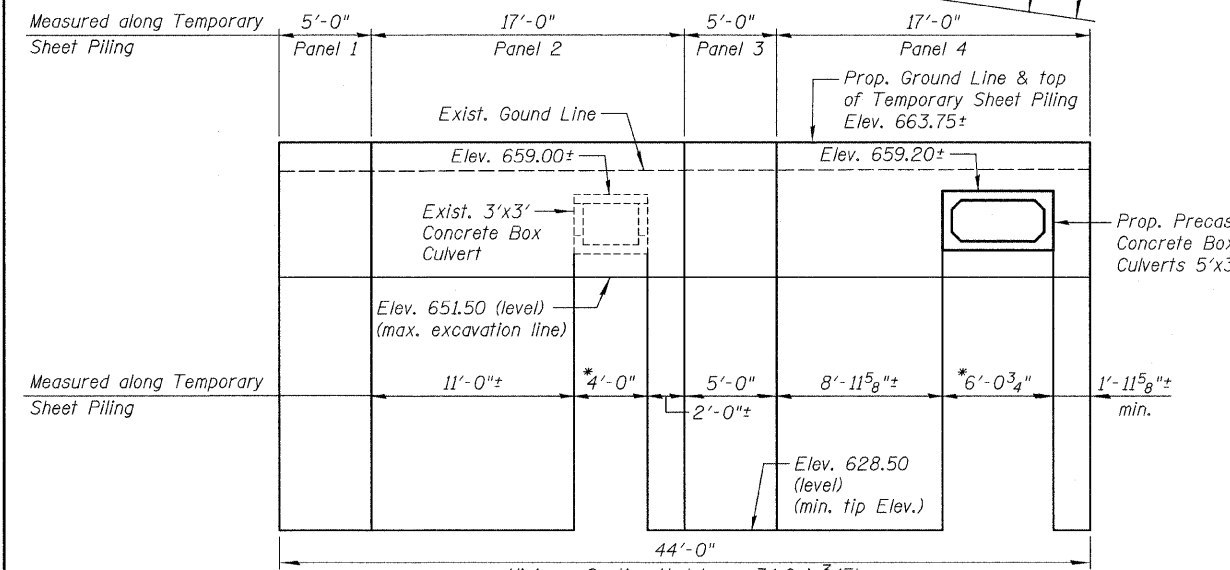
STAGE II CONSTRUCTION



PROPOSED CROSS SECTION



DETAIL "A"



Minimum Section Modulus = 34.0 in³/Ft.

CONSTRUCTION SEQUENCE

STAGE I

1. Install Temporary Sheet Piling Panels 1, 2 & 3.
2. Remove existing precast concrete box culvert. See Stage Construction Details & limits of removal, this Sheet.
3. Excavate to limits as shown in Elevation, see Sht. SC2-1.
4. Install Porous Granular Embankment, Subgrade in the excavated area.
5. Install new precast concrete box culvert. See Stage Construction Details & limits of replacement, this Sheet.
6. Install Temporary Sheet Piling Panel 4.
7. Install Stage I portion of the new Roadway.

STAGE II

1. Remove existing precast concrete box culvert. See Stage Construction Details & limits of removal, this Sheet.
2. Remove Temporary Sheet Piling Panels 1, 2 & 3.
3. Excavate to limits as shown in Elevation, see Sht. SC2-1.
4. Install Porous Granular Embankment, Subgrade in the excavated area.
5. Install new precast concrete box culvert. See Stage Construction Details & limits of replacement, this Sheet.
6. Remove Temporary Sheet Piling System Panel 4
7. Install Stage II portion of the new Roadway.

**ELEVATION OF PANELS
TEMPORARY SHEET PILING**

*Do not disturb soil under the existing & proposed culverts during placement of Temporary Sheet Piling

**STAGE CONSTRUCTION DETAILS
STRUCTURE NO. 049-C004
OUTLET NO. 15**



FILE NAME = 0168953-02-stage.const-det.dgn	USER NAME =	DESIGNED - J.C.N./B.N.S.	REVISED -
		CHECKED - B.N.S.	REVISED -
	PLOT SCALE =	DRAWN - F.M.	REVISED -
	PLOT DATE =	CHECKED - B.N.S./J.C.N.	REVISED -

STATE OF ILLINOIS
DEPARTMENT OF TRANSPORTATION

STAGE CONSTRUCTION DETAILS
STRUCTURE NO. 049-C004

SHEET NO. SC2-2 OF SC2-4 SHEETS

F.A.P. RTE. 330	SECTION 128R-3	COUNTY LAKE	TOTAL SHEETS 518	SHEET NO. 358
				CONTRACT NO. 60953
ILLINOIS FED. AID PROJECT				