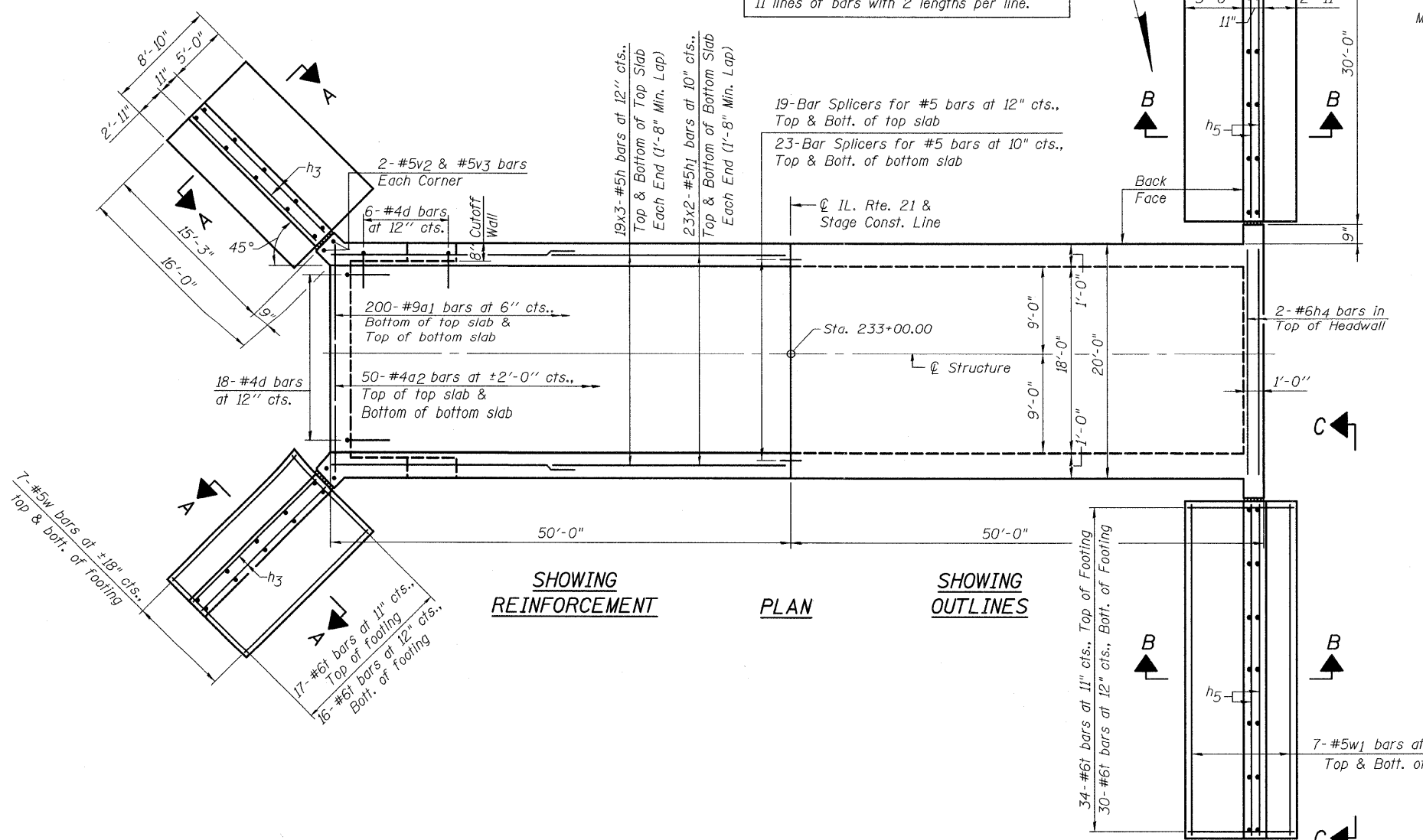


REINF.-EAST WINGWALLS

HALF LONG. SECTION

HALF ELEVATION

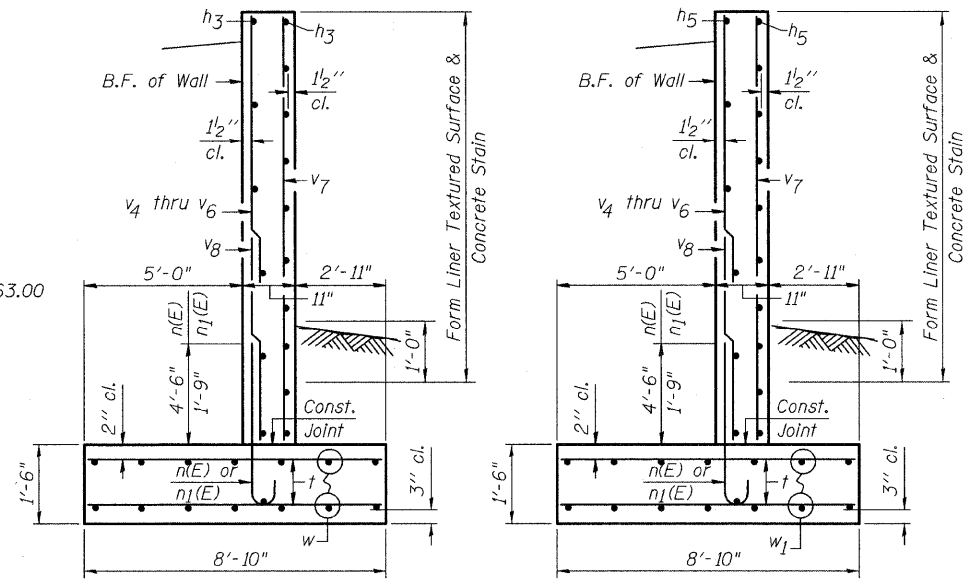
NOTE:
 Bars indicated thus 11x2-#5 etc. indicates 11 lines of bars with 2 lengths per line.



SHOWING REINFORCEMENT

PLAN

SHOWING OUTLINES

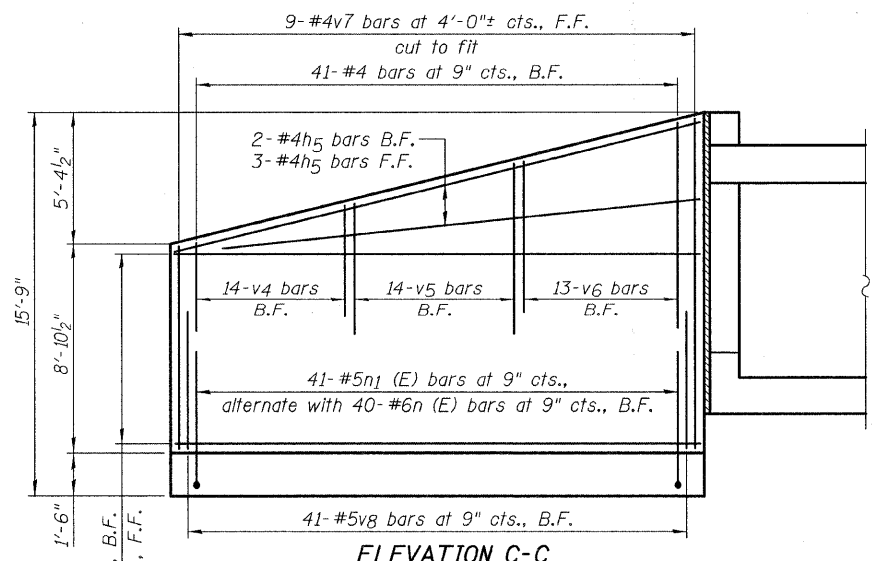


SECTION A-A

SECTION B-B

Max. Soil Pressure under footing = 3,273 psf

Max. Soil Pressure under footing = 3,273 psf



ELEVATION C-C
 Northwest Wingwall - shown
 Southwest Wingwall - similar

LEGEND:
 B.F. = Back Face
 F.F. = Front Face

**REINFORCEMENT DETAILS-I
 STRUCTURE NO. 049-0243**



FILE NAME = 0168953-03-reinforcement.det.Ldgn	USER NAME =	DESIGNED - J.C.N./B.N.S.	REVISOR -
		CHECKED - B.N.S.	REVISOR -
		DRAWN - F.M.	REVISOR -
		CHECKED - B.N.S./J.C.N.	REVISOR -

**STATE OF ILLINOIS
 DEPARTMENT OF TRANSPORTATION**

**REINFORCEMENT DETAILS-I
 STRUCTURE NO. 049-0243**
 SHEET NO. SC5-3 OF SC5-6 SHEETS

F.A.P. RTE. 330	SECTION 128R-3	COUNTY LAKE	TOTAL SHEETS 518	SHEET NO. 372
				CONTRACT NO. 60953
ILLINOIS FED. AID PROJECT				